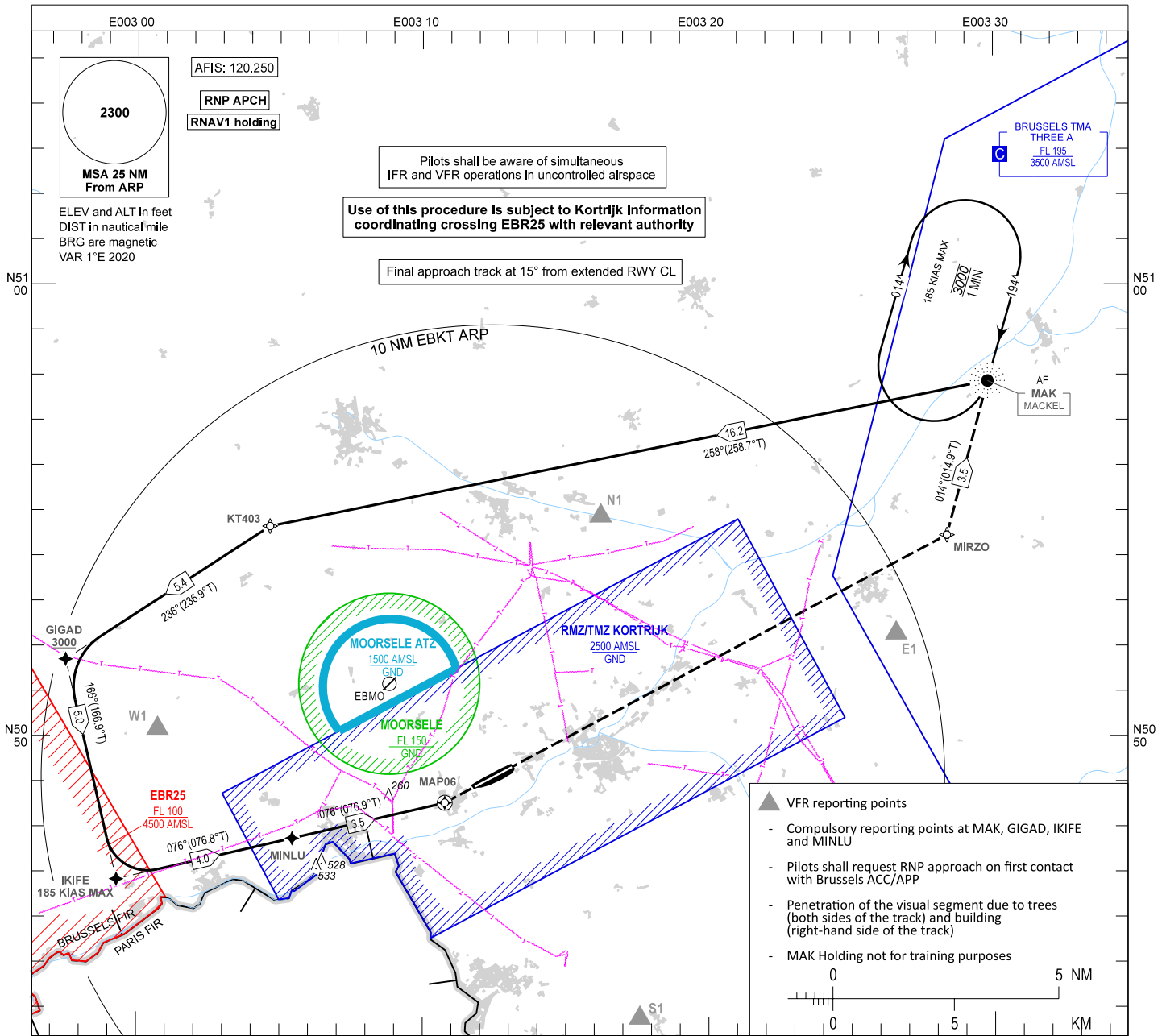


INSTRUMENT APPROACH CHART - ICAO

OCH RELATED TO AD ELEV 55

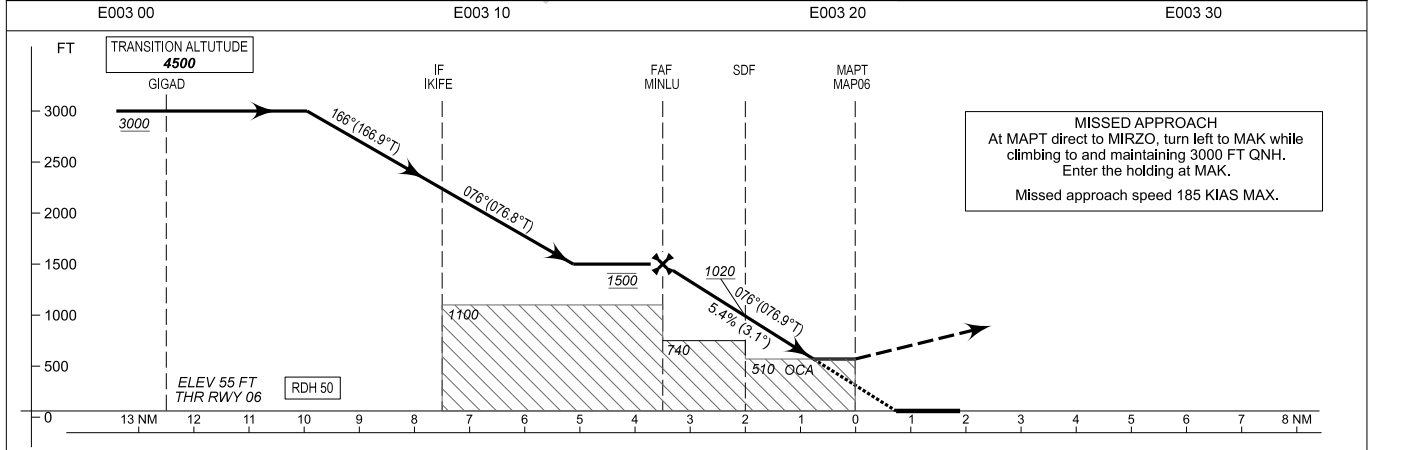
KORTRIJK / Wevelgem (EBKT)
RNP RWY 06



▲ VFR reporting points

- Compulsory reporting points at MAK, GIGAD, IKIFE and MINLU
- Pilots shall request RNP approach on first contact with Brussels ACC/APP
- Penetration of the visual segment due to trees (both sides of the track) and building (right-hand side of the track)
- MAK Holding not for training purposes

0 5 NM
0 5 KM



CAT of ACFT	OCA (OCH)			FAF to MAPT - 3.5 NM					
	A	B	C	Speed (GS)	KT	70	90	120	150
LNAV	510 (460)	510 (460)	510 (460)	Rate of descent	FT/MIN	385	495	660	825
CIRCLING	Not allowed			PROCEDURE ALTITUDES (HEIGHTS)					
AD OPR MNM: 800 M VIS				DIST MAPT	3.0	SDF 2.0	1.0		
				Altitude (height)	1350 (1290)	1020 (960)	690 (630)		

CHANGE: Note updated