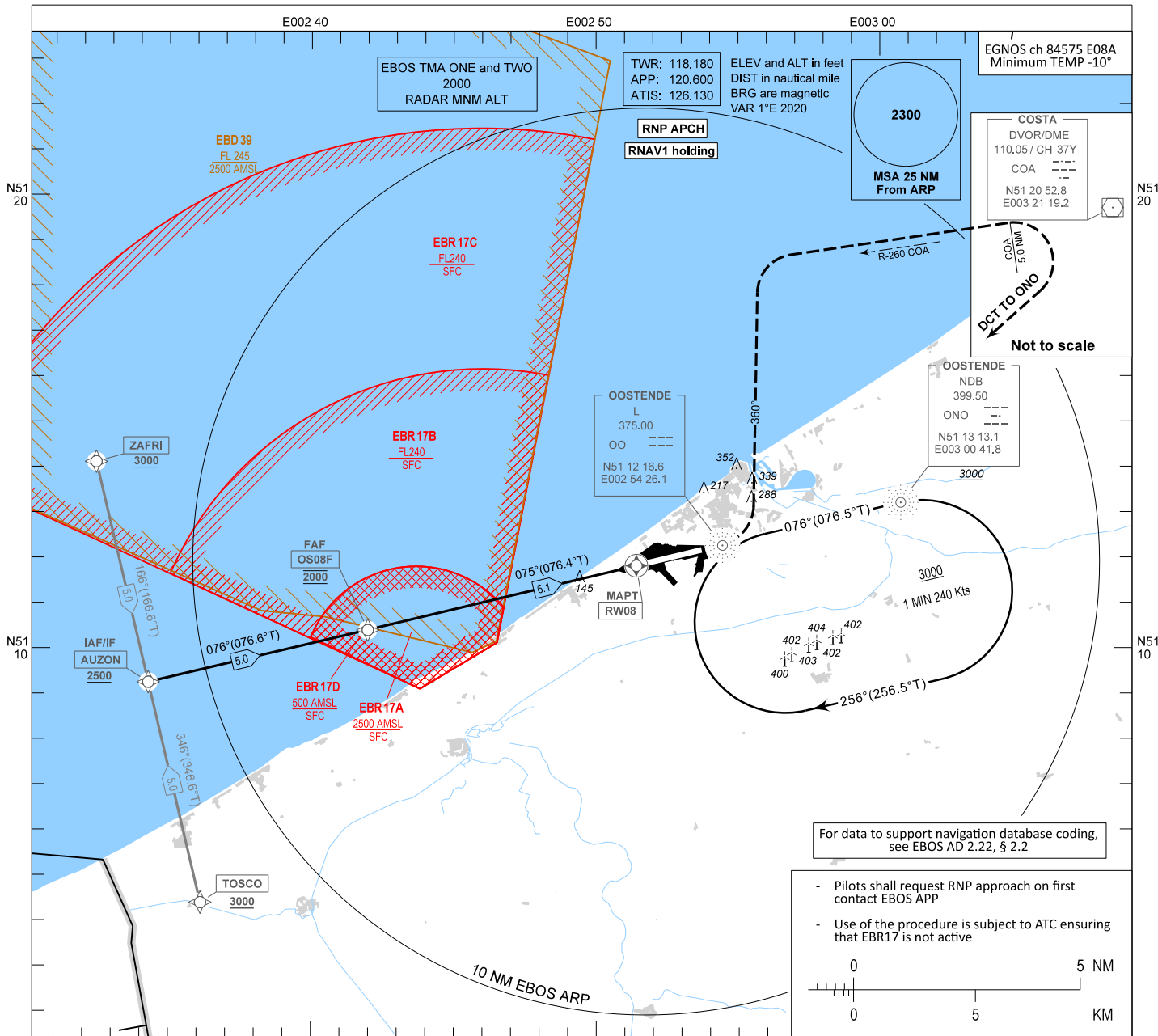


INSTRUMENT APPROACH CHART - ICAO

AD ELEV 7
OCH RELATED TO
THR RWY 08 - ELEV 7

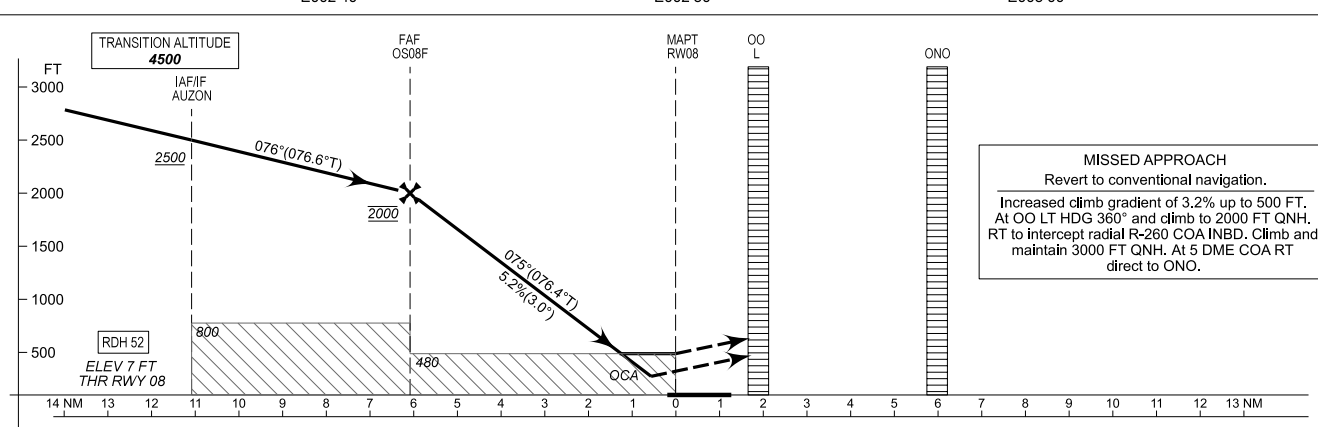
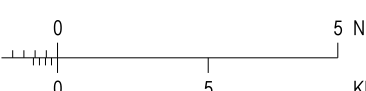
OOSTENDE-BRUGGE / Oostende (EBOS)

RNP RWY 08



For data to support navigation database coding, see EBOS AD 2.22, § 2.2

- Pilots shall request RNP approach on first contact EBOS APP
- Use of the procedure is subject to ATC ensuring that EBR17 is not active



MISSED APPROACH
Revert to conventional navigation.
Increased climb gradient of 3.2% up to 500 FT. At OO LT HDG 360° and climb to 2000 FT QNH. RT to intercept radial R-260 COA INBD. Climb and maintain 3000 FT QNH. At 5 DME COA RT direct to ONO.

CAT of ACFT	OCA (OCH)				FAF to MAPT - 6.1 NM						
	A	B	C	D/DL	Speed (GS)	KT	70	90	120	150	180
LNAV	480 (470)	480 (470)	480 (470)	480 (470)	Rate of descent	FT/MIN	375	480	640	800	960
LNAV/VNAV	269 (262)	279 (272)	288 (281)	298 (291)	PROCEDURE ALTITUDES (HEIGHTS)						
LPV	207 (200)	207 (200)	207 (200)	207 (200)	DIST THR		6.0	5.0	4.0	3.0	2.0
CIRCLING	580 (570)	650 (650)	800 (790)	800 (790)	Altitude		1970	1660	1340	1020	700
					Height		(1970)	(1650)	(1330)	(1010)	(690)

CHANGES: EBR17D added