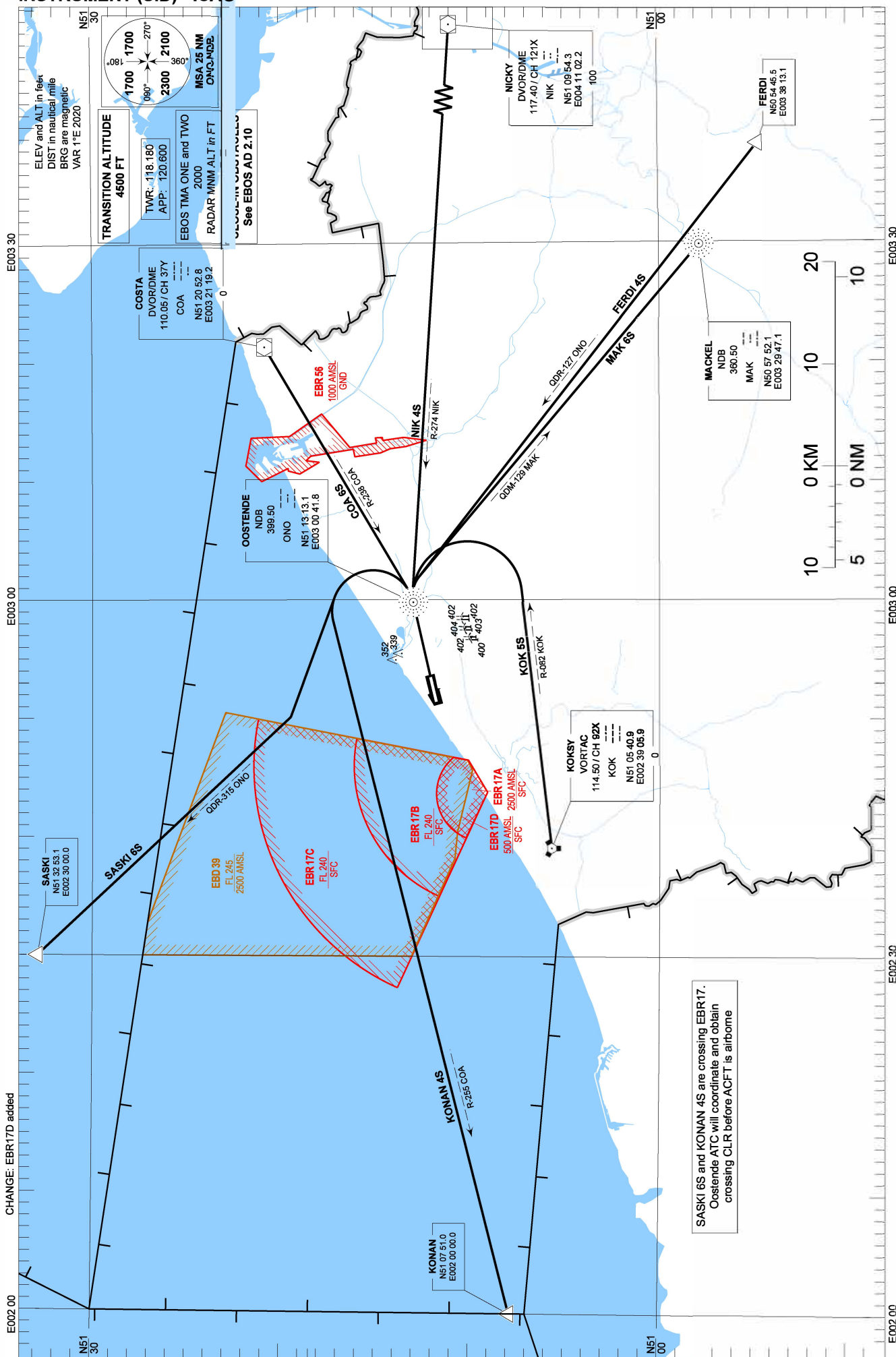


STANDARD DEPARTURE CHART - INSTRUMENT (SID) - ICAO

COA 6S KOK 5S KONAN 4S  
MAK 6S FERDI 4S NIK 4S SASKI 6S

OOSTENDE-BRUGGE / Oostende (EBOS)

RWY 08



CHANGE: EBR17D added

SASKI 6S and KONAN 4S are crossing EBR17.  
Oostende ATC will coordinate and obtain  
crossing CLR before ACFT is airborne