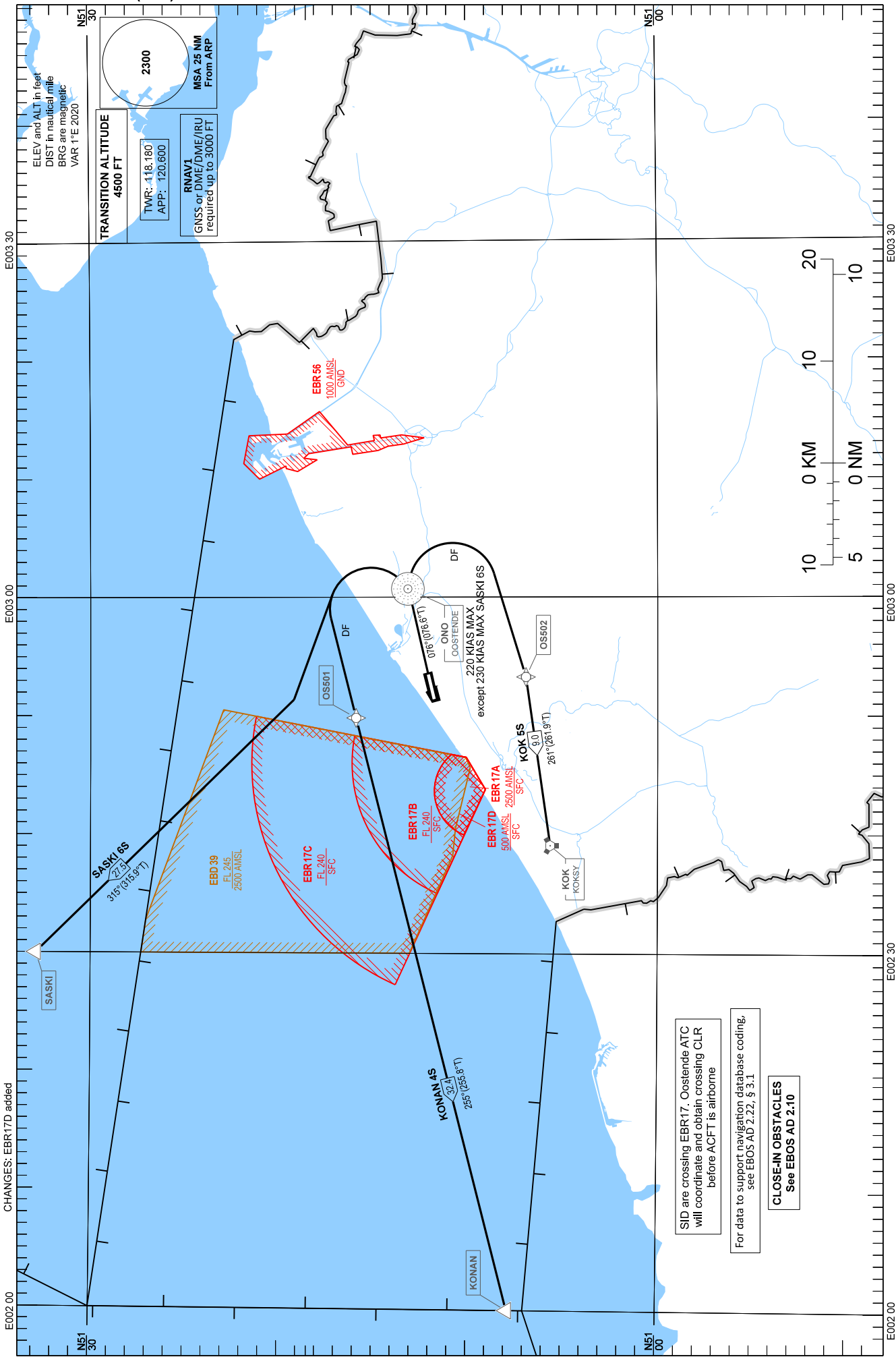


STANDARD DEPARTURE CHART - INSTRUMENT (SID) - ICAO

KOK 5S KONAN 4S SASKI 6S

OOSTENDE-BRUGGE / Oostende (EBOS)

RNAV RWY 08 (Part b)



CHANGES: EBR17D added

SID are crossing EBR17. Oostende ATC will coordinate and obtain crossing CLR before ACFT is airborne
For data to support navigation database coding, see EBOS AD 2.22, § 3.1

CLOSE-IN OBSTACLES
See EBOS AD 2.10