

MIPS
INSTRUMENT APPROACH CHART

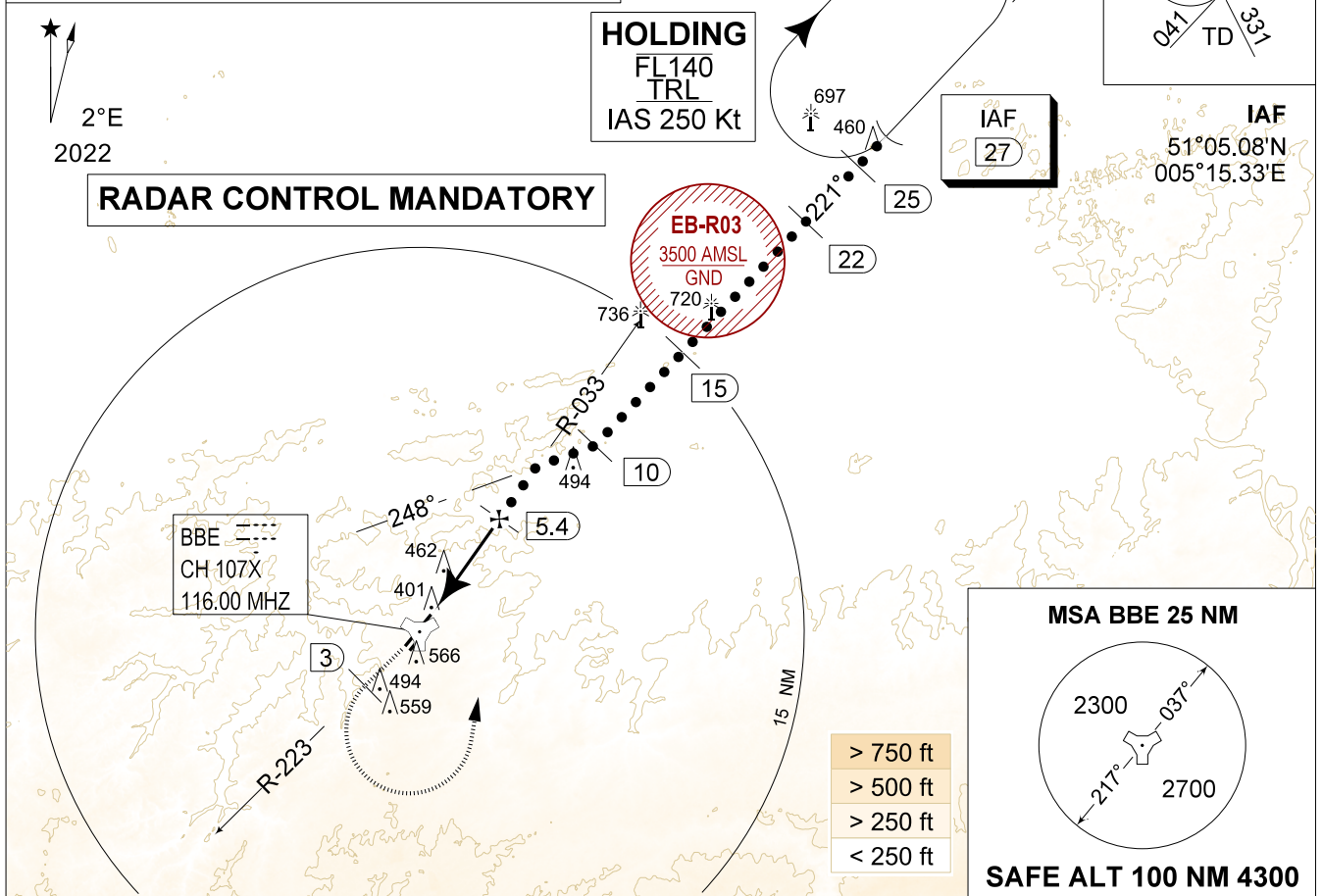
HPMA TACAN RWY 22R
BEAUVECHAIN (EBBE)

AD ELEV 362

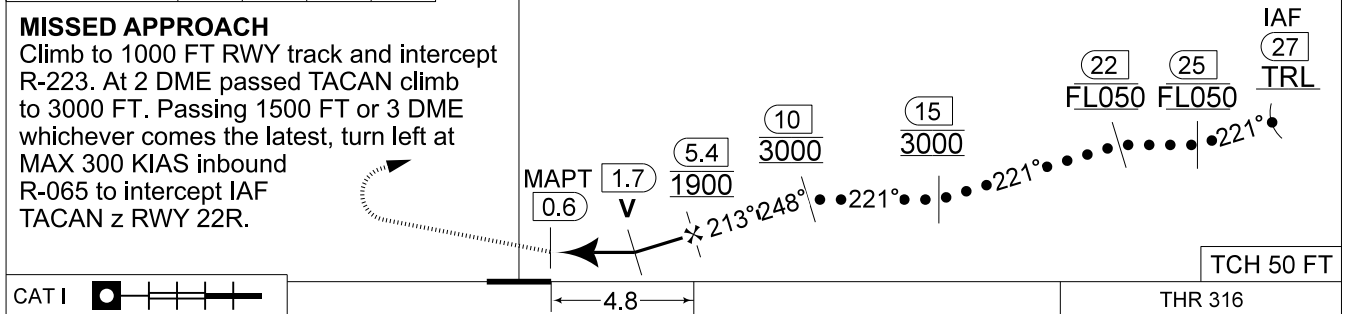
BELGA RADAR 374.400 129.325		BEAUVECHAIN APP 282.100 122.830		BEAUVECHAIN TWR 231.500 130.730		BEAUVECHAIN GND 359.825 121.855	
TACAN BBE CH107X	APP COURSE 213°	FAF ALT 1800 FT	DESCENT GR 5.24%(3°)	MDA 710	THR 316 FT	ALS 930 M	LDA 7975 FT

CAUTION:
a) DO NOT USE THIS PROCEDURE WITH COMMS FAILURE

NOTE:
a) BEL AIRCRAFT ONLY
b) NOT AVAILABLE WHEN ACTIVITIES IN EB-R03



DME BBE	5	4	3	2
Altitude	1760	1440	1120	800
Height	(1444)	(1124)	(804)	(484)



MIPS	CATEGORY	HPMA
	S-TAC 22R	710 - 1.1 394 (400 - 1.1 / 2.1)
	S-PAR 22R	516 - 0.8 200 (200 - 0.8 / 0.9) GS 3.00°

HPMA TACAN RWY 22R 50°45.47' N
004°46.02' E **BEAUVECHAIN (EBBE)**

1-12