

MIPS
INSTRUMENT APPROACH CHART

HPMA TACAN RWY 22R
BEAUVECHAIN (EBBE)

AD ELEV 362

BELGA RADAR		BEAUVECHAIN APP		BEAUVECHAIN TWR		BEAUVECHAIN GND	
374.400	129.325	282.100	122.830	362.025	130.730	359.825	121.855
TACAN	APP COURSE	FAF ALT	DESCENT GR	MDA	THR	ALS	LDA
BBE CH107X	213°	1900 FT	5.24%(3°)	710	315 FT	930 M	7988 FT

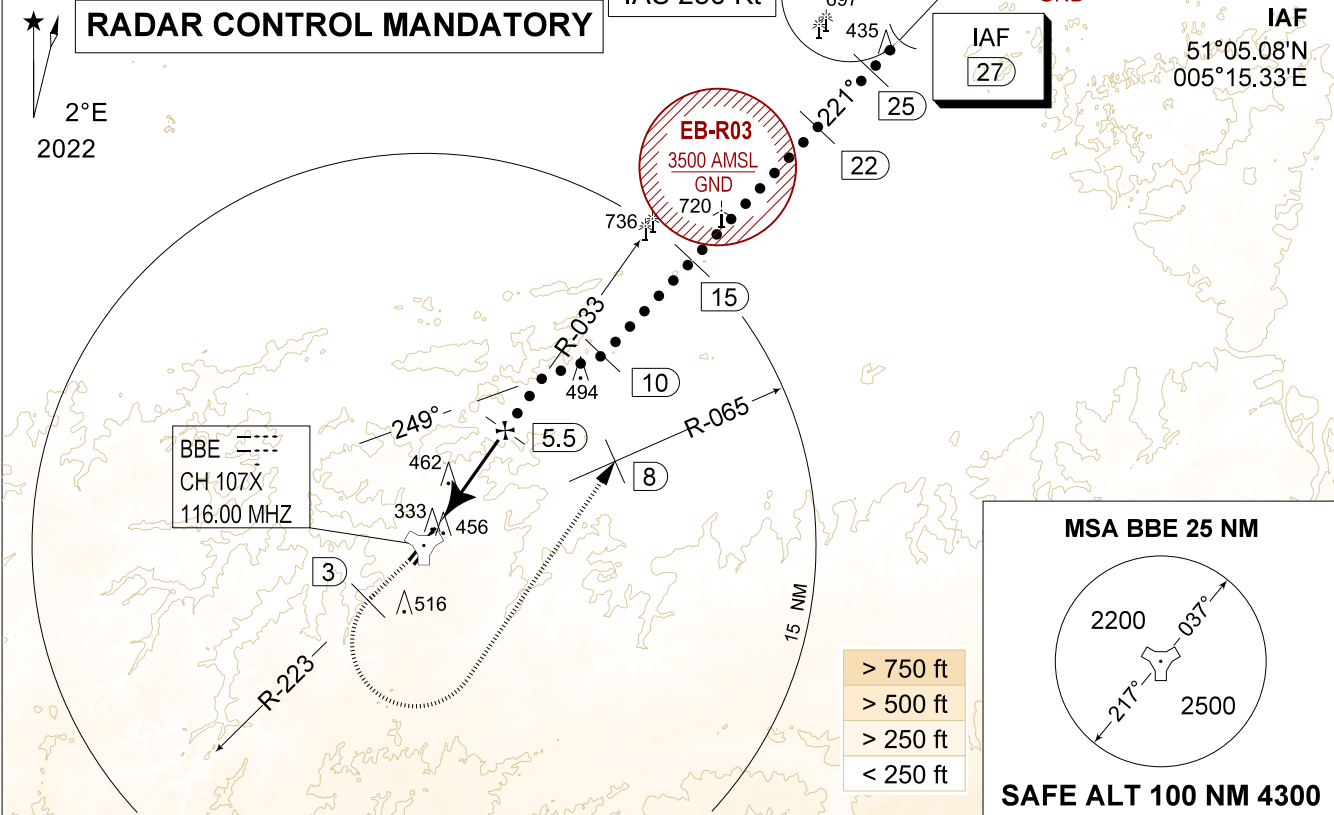
CAUTION:

- a) DO NOT USE THIS PROCEDURE WITH COMMS FAILURE
- b) PROCEDURE CANNOT BE EXECUTED IF EB-R42 IS RAISED ABOVE 2700 FT AMSL
- c) PROCEDURE CANNOT BE EXECUTED IF EB-R03 IS RAISED ABOVE 2000 FT AMSL

NOTE:

- a) BEL AIRCRAFT ONLY
- b) NOT AVAILABLE WHEN ACTIVITIES IN EB-R03

RADAR CONTROL MANDATORY



DME BBE	5	4	3	2
Altitude	1760	1440	1120	800
Height	(1444)	(1124)	(804)	(484)

TACAN

TA 4500

MISSED APPROACH

Climb to 1000 FT RWY track and intercept R-223. At 2 DME passed TACAN climb to 3000 FT. Passing 1500 FT or 3 DME whichever comes the latest, turn left at MAX 300 KIAS to intercept 8 DME/R-065 outbound and proceed for a TACAN z RWY 22R.



CATEGORY	HPMA
S-TAC 22R	710 - 1.1 395 (400 - 1.1 / 2.1)
S-PAR 22R	515 - 0.8 200 (200 - 0.8 / 0.9) GS 3.00°

HPMA TACAN RWY 22R

50°45.47' N
004°46.02' E

BEAUVECHAIN (EBBE)

CHANGE: EB-R42 added and caution updated

BEL DEFENCE, AIR COMPONENT 13-JUN-2024 -THS