

**MIPS INSTRUMENT APPROACH CHART** AD ELEV 362 **ILS x RWY 22R BEAUVECHAIN (EBBE)**

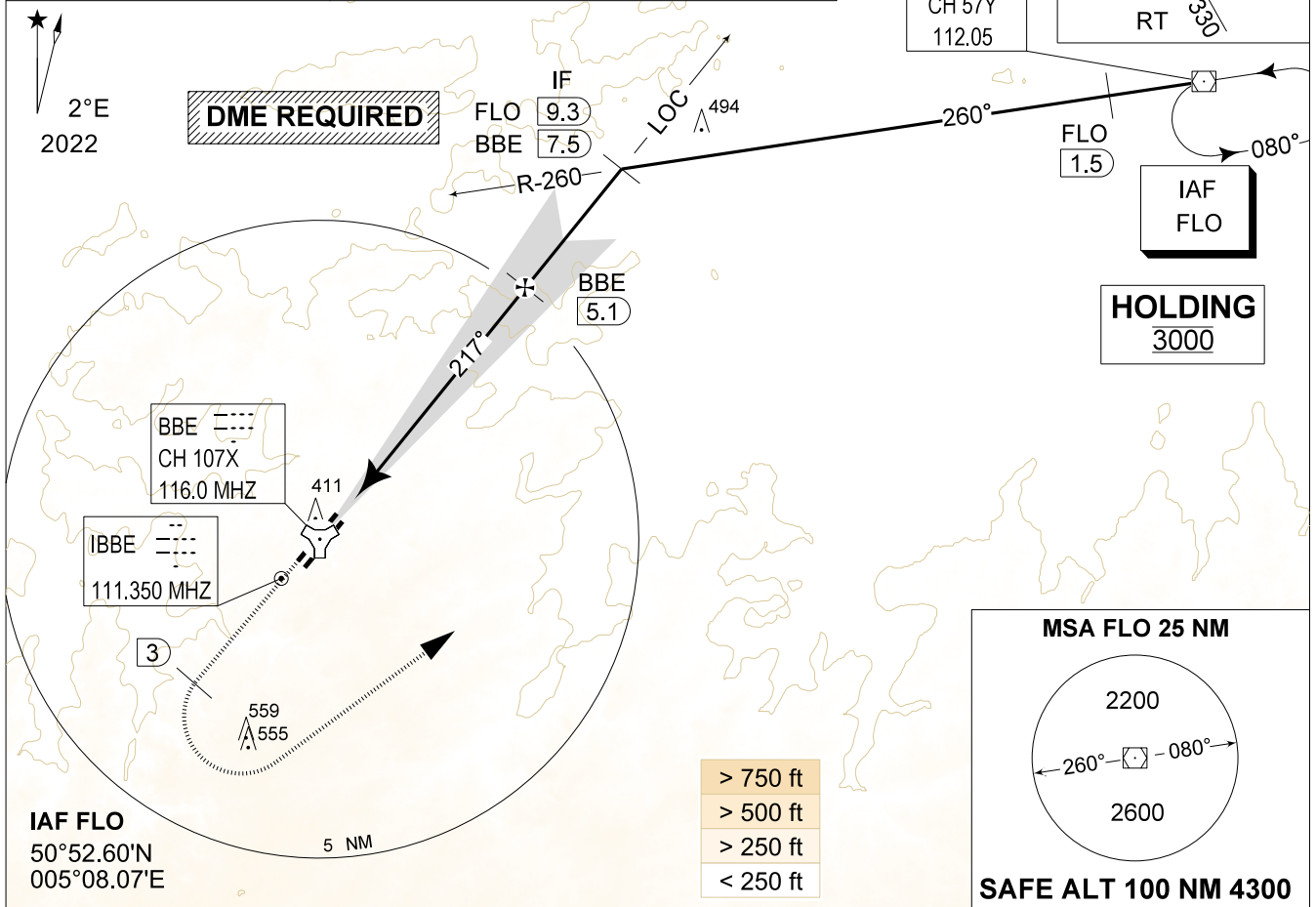
|                                  |                    |                                    |             |                                    |               |                                    |                |
|----------------------------------|--------------------|------------------------------------|-------------|------------------------------------|---------------|------------------------------------|----------------|
| BELGA RADAR<br>374.400 129.325   |                    | BEAUVECHAIN APP<br>282.100 122.830 |             | BEAUVECHAIN TWR<br>231.500 130.730 |               | BEAUVECHAIN GND<br>359.825 121.855 |                |
| LOC / DME<br>IBBE 111.350 / 107X | APP COURSE<br>217° | GS INTCP ALT<br>1800 FT            | GS<br>3.00° | DA<br>516                          | THR<br>316 FT | ALS<br>930 M                       | LDA<br>7975 FT |

**WARNING:**

a) INTERMEDIATE SEGMENT LENGTH SHORTER THAN PRESCRIBED LENGTH FOR CAT A (2 NM ISO 3 NM)

**NOTE:**

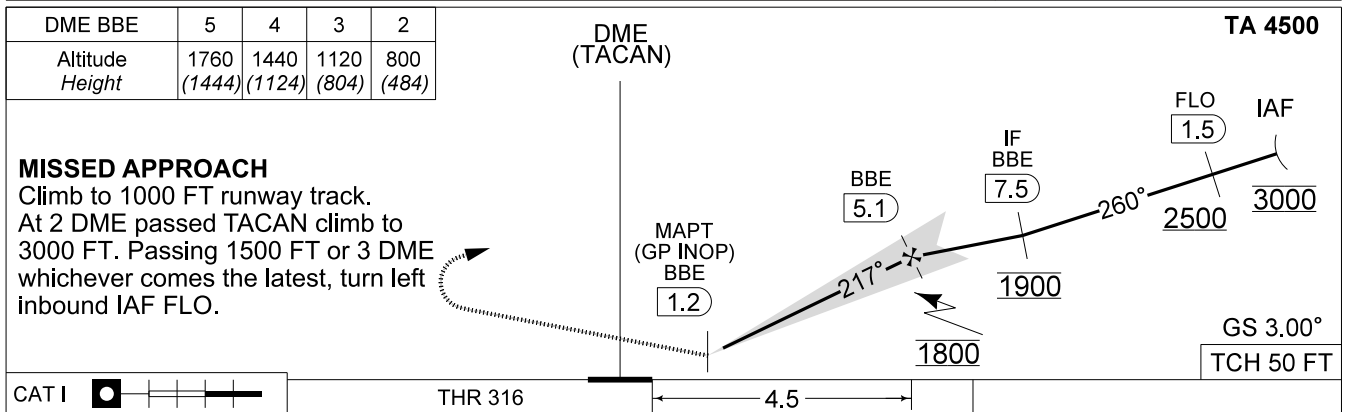
a) DME INFORMATION AVAILABLE UNDER FREQUENCY 116.000 MHZ



|          |        |        |       |       |
|----------|--------|--------|-------|-------|
| DME BBE  | 5      | 4      | 3     | 2     |
| Altitude | 1760   | 1440   | 1120  | 800   |
| Height   | (1444) | (1124) | (804) | (484) |

**MISSED APPROACH**

Climb to 1000 FT runway track. At 2 DME passed TACAN climb to 3000 FT. Passing 1500 FT or 3 DME whichever comes the latest, turn left inbound IAF FLO.



|           |  |     |  |           |
|-----------|--|-----|--|-----------|
| CAT I     | THR 316                                  | 4.5 | GS 3.00°                                 | TCH 50 FT |
| CATEGORY  | A  |     | H  |           |
| S-ILS 22R | 516 - 0.8 200 (200 - 0.8 / 0.9) GS 3.00° |     |  |           |
| S-LOC 22R | 710 - 1.1 394 (400 - 1.1 / 2.1)          |     |  |           |
| S-PAR 22R | 535 - 0.8 219 (300 - 0.8 / 1.0) GS 3.00° |     | 516 - 0.8 200 (200 - 0.8 / 0.9) GS 3.00° |           |

**ILS x RWY 22R** 50°45.47' N 004°46.02' E **BEAUVECHAIN (EBBE)** 1-13