

**MIPS**  
**INSTRUMENT APPROACH CHART**

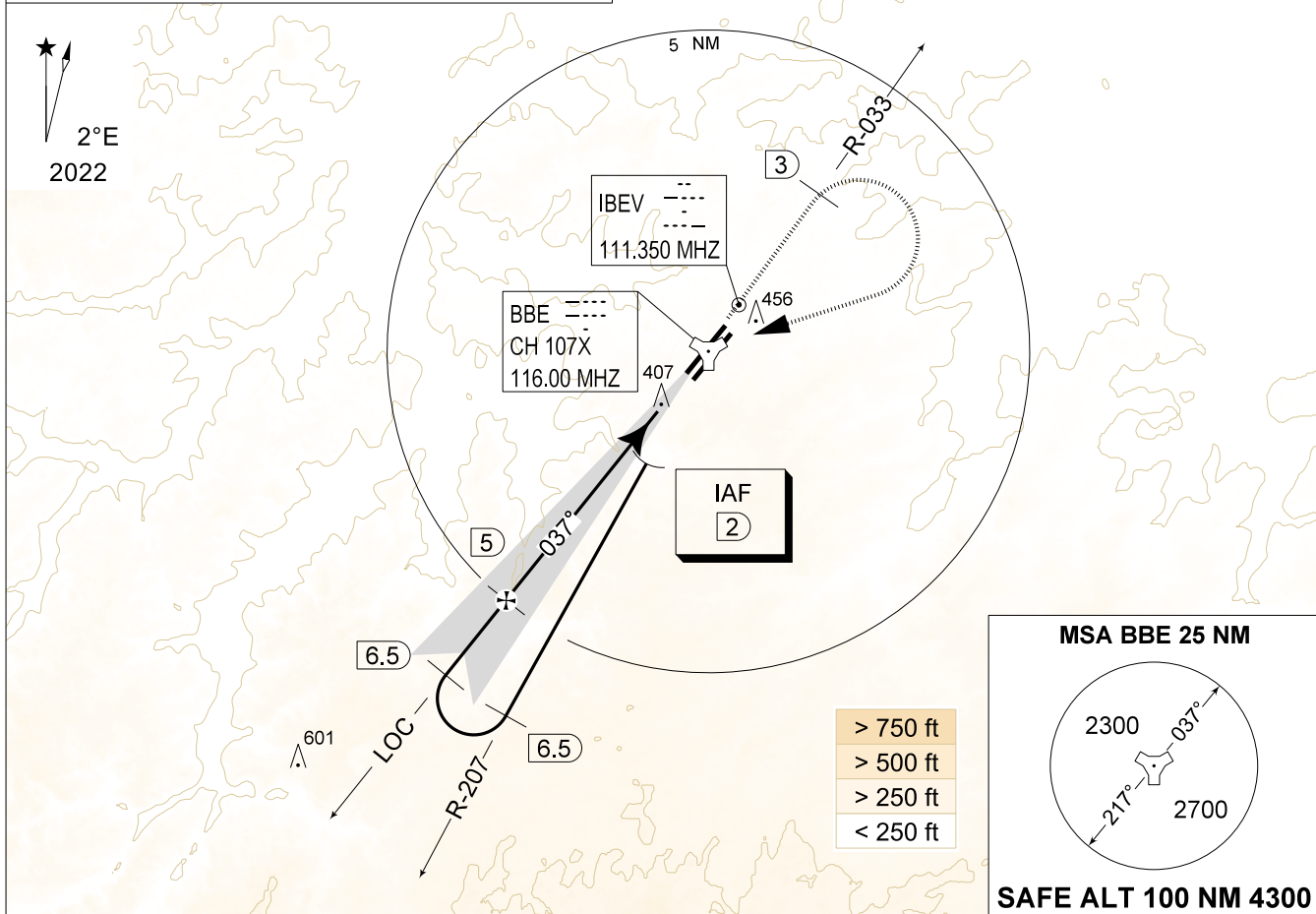
AD ELEV 362

**ILS y RWY 04L**  
**BEAUVECHAIN (EBBE)**

BELGA RADAR 374.400 129.325		BEAUVECHAIN APP 282.100 122.830		BEAUVECHAIN TWR 231.500 130.730		BEAUVECHAIN GND 359.825 121.855	
LOC / DME IBEV 111.350 / 107X	APP COURSE 037°	GS INTcpt ALT 1800 FT	GS 3.00°	DA 549	THR 349 FT	ALS 930 M	LDA 7988 FT

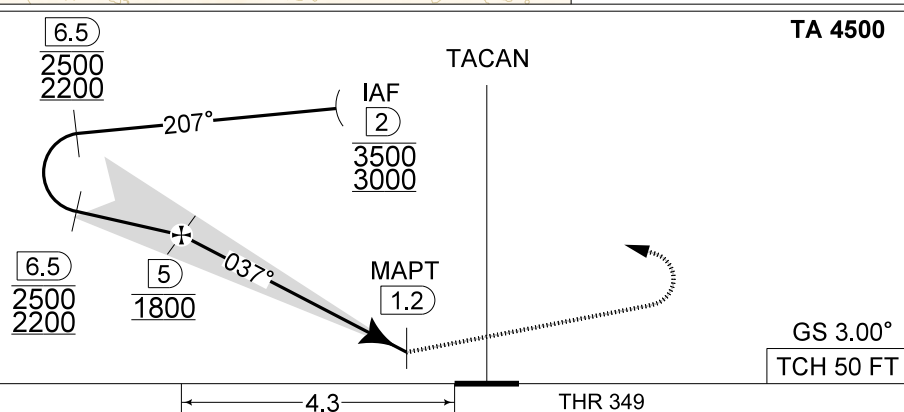
**NOTE:**  
a) DME INFORMATION AVAILABLE UNDER FREQUENCY 116.000 MHz  
b) IF IAF IS ABOVE 3000 FT, ATC COORDINATION WITH BRUSSELS ACC IS REQUIRED

**IAF**  
50°43.66'N  
004°44.60'E



DME BBE	5	4	3	2
Altitude	1790	1470	1150	830
Height	(1441)	(1121)	(801)	(481)

**MISSED APPROACH**  
Climb to 1000 FT RWY track and intercept R-033. At 2 DME past TACAN climb to 3000 FT. Passing 1500 FT or 3 DME whichever comes the latest, turn right inbound BBE TACAN and proceed back to IAF ILS y RWY 04L.



CAT I

CATEGORY	A
S-ILS 04L	549 - 0.8 200 (200 - 0.8 / 1.2) GS 3.00°
S-LOC 04L	750 - 1.5 401 (500 - 1.5 / 2.4)
S-PAR 04L	578 - 0.8 229 (300 - 0.8 / 1.4) GS 3.00°

**ILS y RWY 04L**

50°45.47' N  
004°46.02' E  
1-16

**BEAUVECHAIN (EBBE)**

CHANGE: LDA updated

**MIPS**

BEL DEFENCE, AIR COMPONENT 24-MAR-2022 - THS