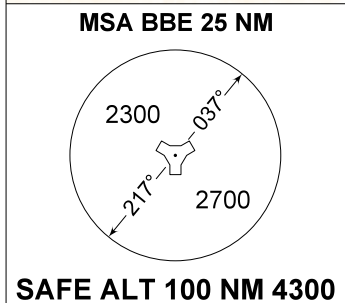
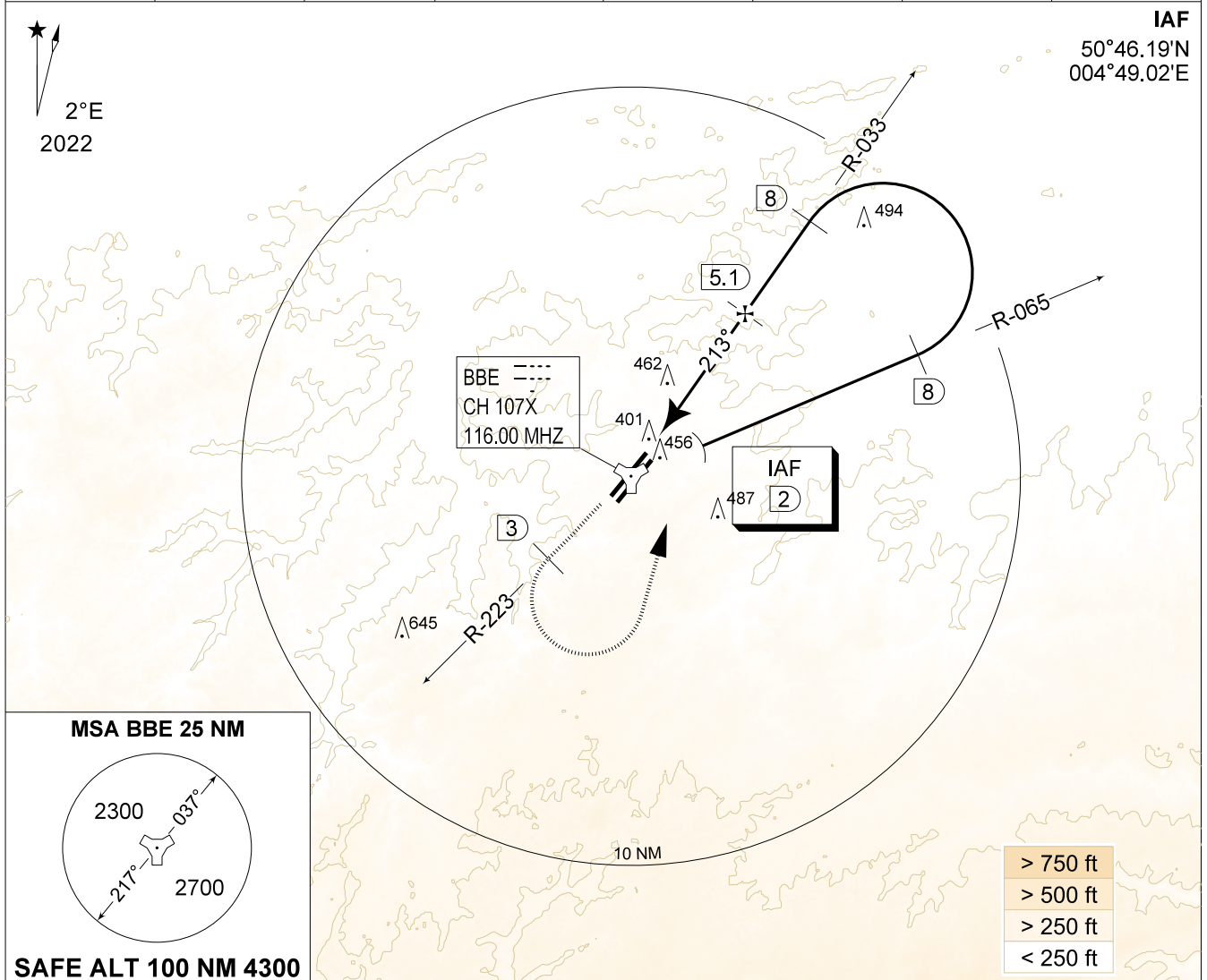


**MIPS**  
**INSTRUMENT APPROACH CHART**

AD ELEV 362

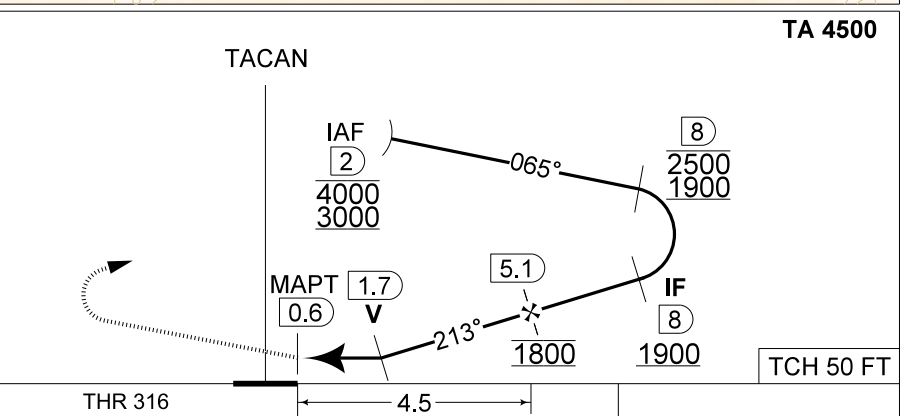
**TACAN z RWY 22R**  
**BEAUVECHAIN (EBBE)**

BELGA RADAR 374.400 129.325		BEAUVECHAIN APP 282.100 122.830		BEAUVECHAIN TWR 231.500 130.730		BEAUVECHAIN GND 359.825 121.855	
TACAN BBE CH107X	APP COURSE 213°	FAF ALT 1800 FT	DESCENT GR 5.24%(3°)	MDA 710	THR 316 FT	ALS 930 M	LDA 7975 FT



DME BBE	5	4	3	2
Altitude	1760	1440	1120	800
Height	(1444)	(1124)	(804)	(484)

**MISSED APPROACH**  
Climb to 1000 FT runway track and intercept R-223. At 2 DME past TACAN climb to 3000 FT. Passing 1500 FT or 3 DME whichever comes the latest, turn left at MAX 220 KIAS (300 KIAS for HPMa) inbound R-065 to intercept IAF.



CATEGORY	C	D	HPMA
S-TAC 22R	<b>710</b> - 1.4 394 (400 - 1.4 / 2.3)		
S-PAR 22R	<b>555</b> - 0.8 239 (300 - 0.8 / 1.4)	<b>566</b> - 0.8 250 (300 - 0.8 / 1.5)	<b>516</b> - 0.8 200 (200 - 0.8 / 1.2)

BEL DEFENCE, AIR COMPONENT 24-MAR-2022 - THS