

MIPS
INSTRUMENT APPROACH CHART

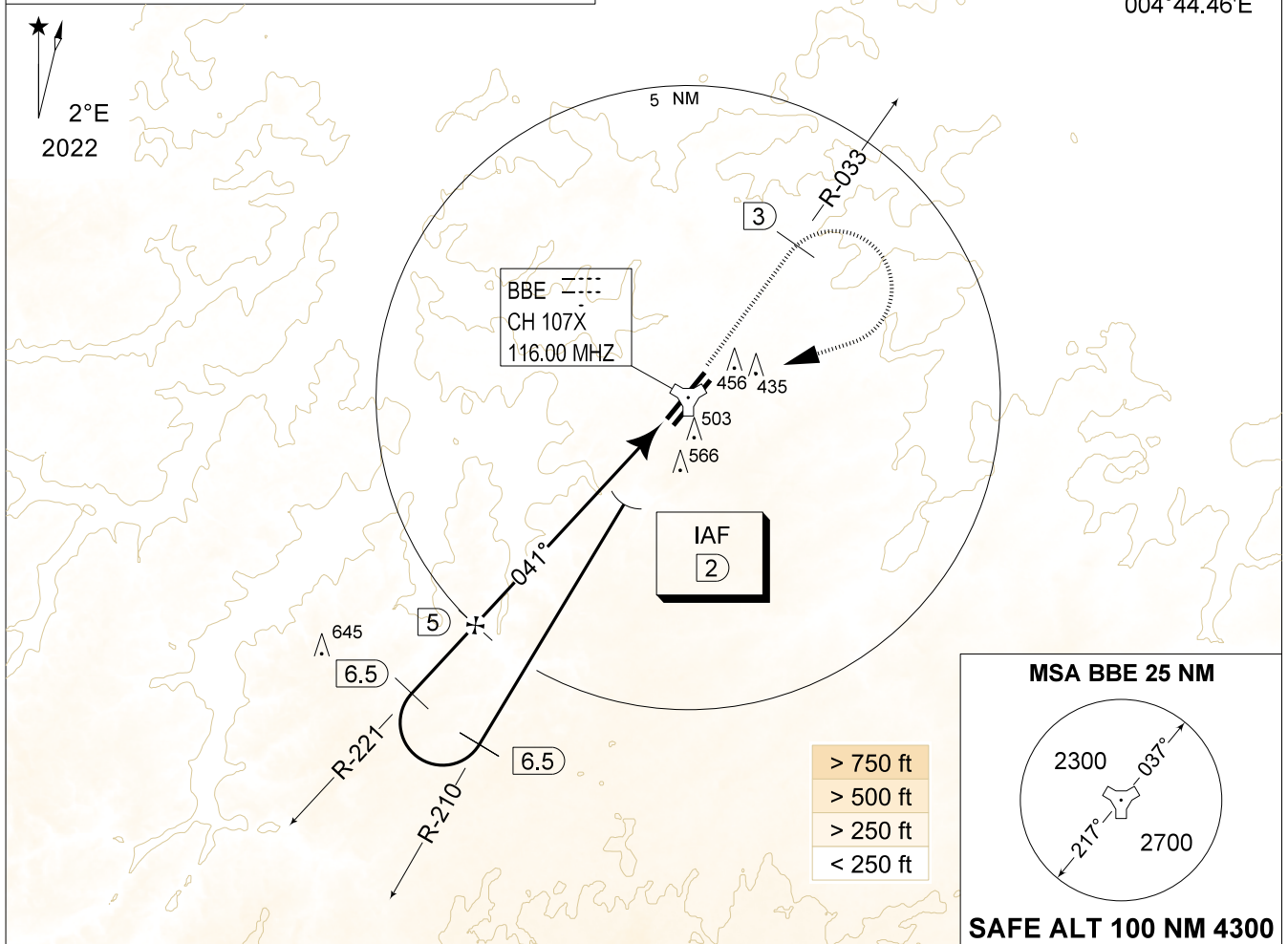
AD ELEV 362

TACAN y RWY 04L
BEAUVECHAIN (EBBE)

BELGA RADAR 374.400 129.325		BEAUVECHAIN APP 282.100 122.830		BEAUVECHAIN TWR 231.500 130.730		BEAUVECHAIN GND 359.825 121.855	
TACAN BBE CH107X	APP COURSE 041°	FAF ALT 1800 FT	DESCENT GR 5.24%(3°)	MDA 760	THR 349 FT	ALS 930 M	LDA 7988 FT

NOTE:
a) IF IAF IS ABOVE 3000 FT, ATC COORDINATION WITH BRUSSELS ACC IS REQUIRED

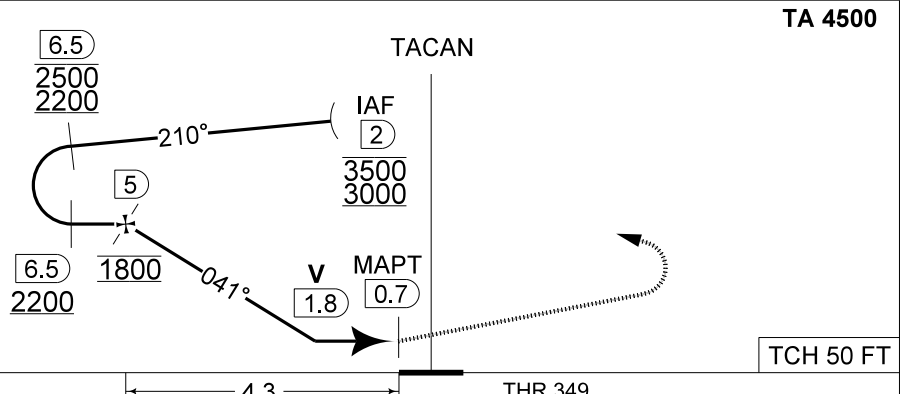
IAF
50°43.72'N
004°44.46'E



DME BBE	5	4	3	2
Altitude	1790	1470	1150	830
Height	(1441)	(1121)	(801)	(481)

MISSED APPROACH

Climb to 1000 FT RWY track and intercept R-033. At 2 DME past TACAN climb to 3000 FT. Passing 1500 FT or 3 DME whichever comes the latest, turn right inbound BBE TACAN and proceed back to IAF TACAN y RWY 04L.



CAT I

CATEGORY	A
S-TAC 04L	760 - 1.5 411 (500 - 1.5 / 2.4)
S-PAR 04L	578 - 0.8 229 (300 - 0.8 / 1.4) GS 3.00°

TACAN y RWY 04L

50°45.47' N
004°46.02' E
1-20

BEAUVECHAIN (EBBE)

CHANGE: 6.5 DME on the final added and LDA updated

BEL DEFENCE, AIR COMPONENT 24-MAR-2022 - THS