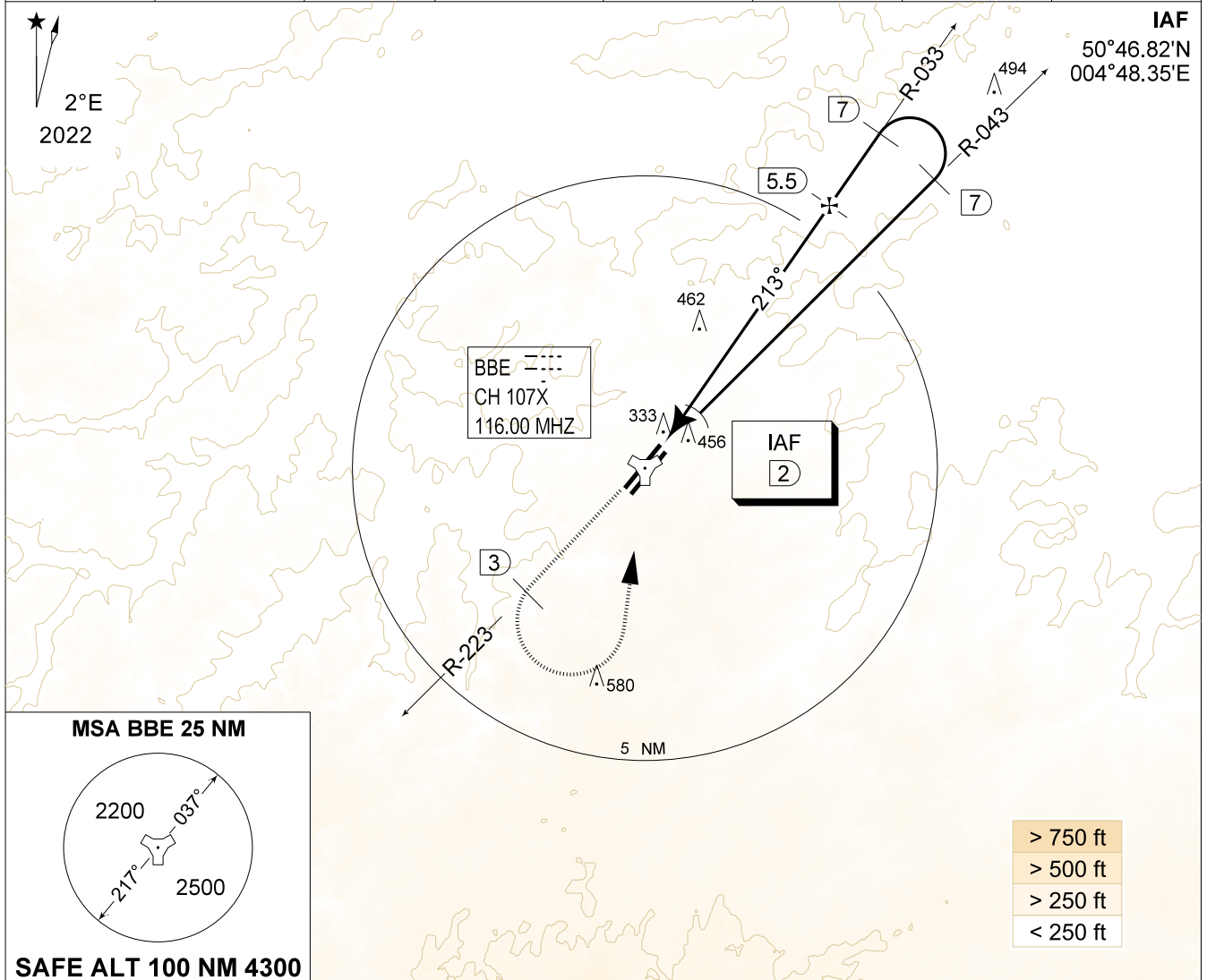


MIPS
INSTRUMENT APPROACH CHART

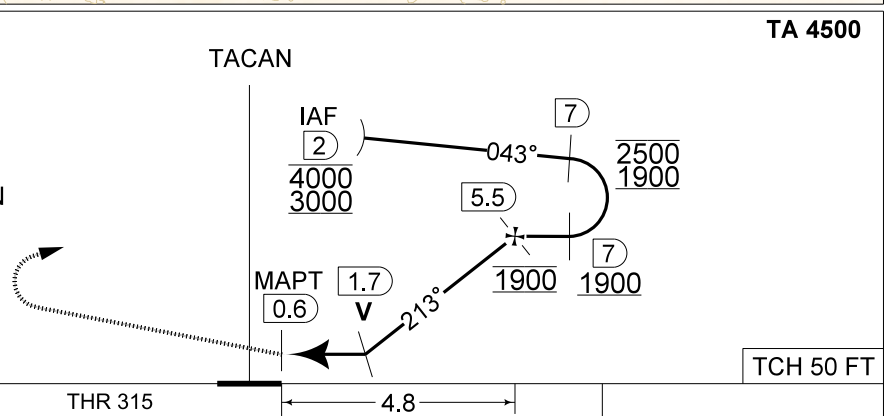
AD ELEV 362

TACAN y RWY 22R
BEAUVECHAIN (EBBE)

BELGA RADAR 374.400 129.325		BEAUVECHAIN APP 282.100 122.830		BEAUVECHAIN TWR 362.025 130.730		BEAUVECHAIN GND 359.825 121.855	
TACAN BBE CH107X	APP COURSE 213°	FAF ALT 1900 FT	DESCENT GR 5.24%(3°)	MDA 710	THR 315 FT	ALS 930 M	LDA 7988 FT



DME BBE	5	4	3	2
Altitude	1760	1440	1120	800
Height	(1444)	(1124)	(804)	(484)



CATEGORY	A
S-TAC 22R	710 - 1.1 395 (400 - 1.1 / 2.1)
S-PAR 22R	534 - 0.8 219 (300 - 0.8 / 1.0) GS 3.00°

TACAN y RWY 22R 50°45.47' N
004°46.02' E **BEAUVECHAIN (EBBE)**

CHANGE: FAF ALT in the header and profile view updated

BEL DEFENCE, AIR COMPONENT 07-SEP-2023 -THS