

**MIPS**  
**INSTRUMENT APPROACH CHART**

AD ELEV 362

**TACAN RWY 04R**  
**BEAUVECHAIN (EBBE)**

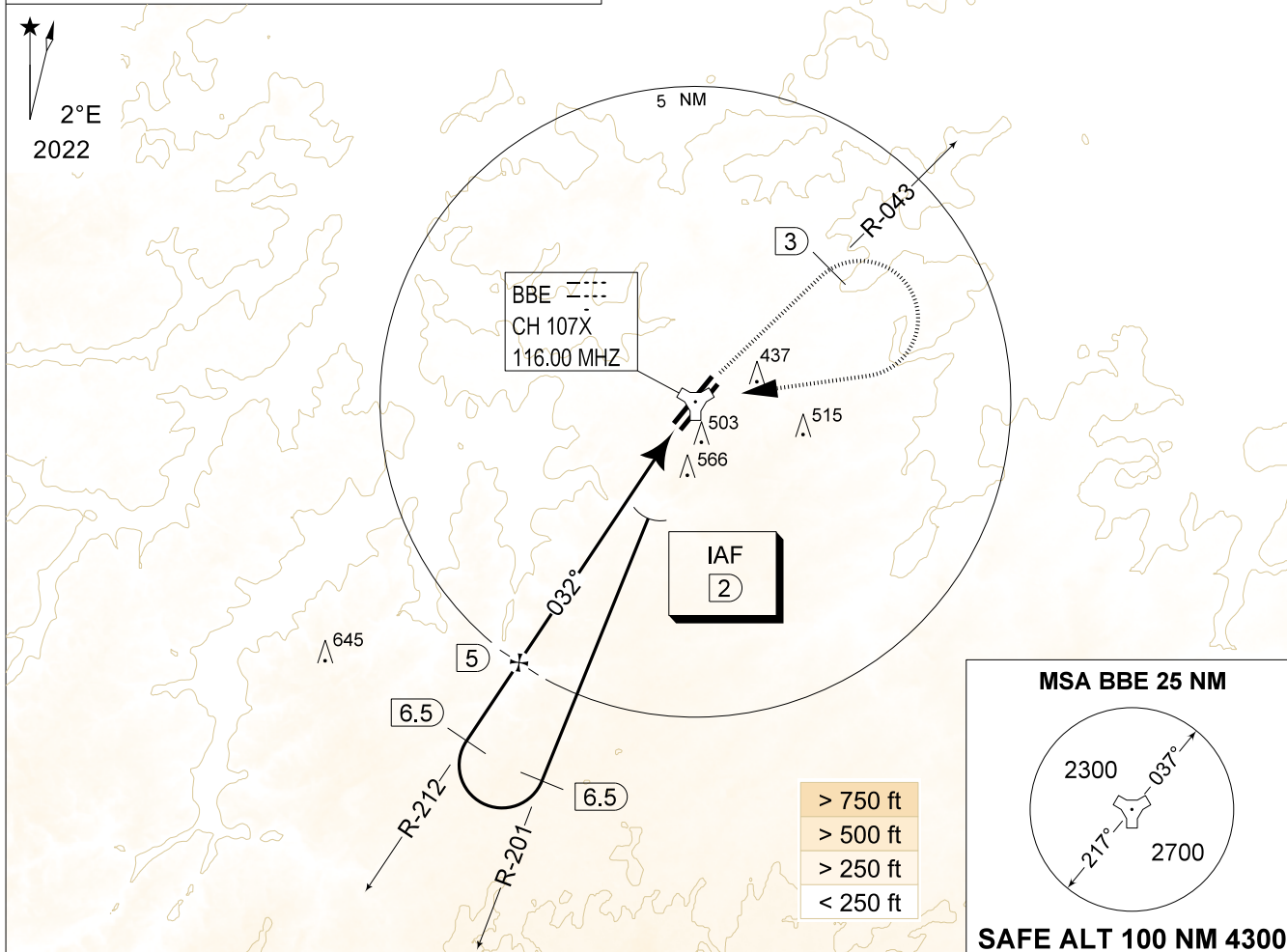
BELGA RADAR 374.400 129.325		BEAUVECHAIN APP 282.100 122.830		BEAUVECHAIN TWR 231.500 130.730		BEAUVECHAIN GND 359.825 121.855	
TACAN BBE CH107X	APP COURSE 032°	FAF ALT 1800 FT	DESCENT GR 5.24%(3°)	MDA <b>820</b>	THR 362 FT	ALS 260 M	LDA 7837 FT

**NOTE:**

a) IF IAF IS ABOVE 3000 FT, ATC COORDINATION WITH BRUSSELS ACC IS REQUIRED

**IAF**

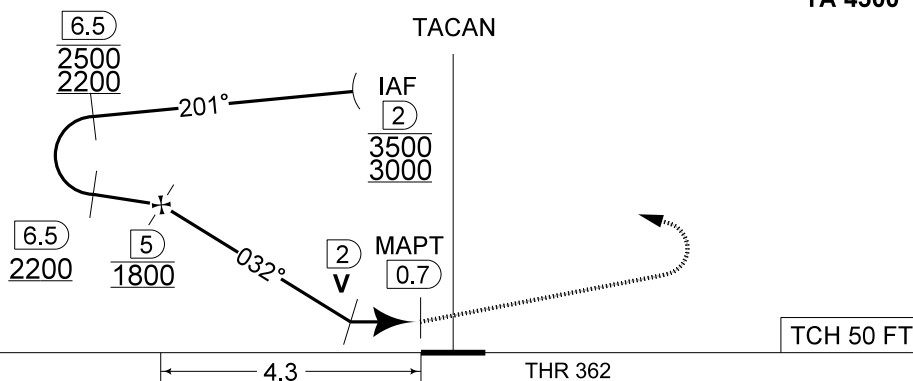
50°43.57'N  
004°44.89'E



DME BBE	5	4	3	2
Altitude	1800	1480	1160	840
Height	(1438)	(1118)	(798)	(478)

**MISSED APPROACH**

Climb to 1000 FT RWY track and intercept R-043. At 2 DME past TACAN climb to 3000 FT. Passing 1500 FT or 3 DME whichever comes the latest, turn right inbound BBE TACAN and proceed back to IAF.



S-ALS

4.3 THR 362

CATEGORY	A
S-TAC 04R	<b>820</b> - 1.5 458 (500 - 1.5 / 2.7)
S-PAR 04R	<b>578</b> - 0.9 216 (300 - 0.9 / 1.3) GS 3.00°

**TACAN RWY 04R**

50°45.47' N  
004°46.02' E  
1-23

**BEAUVECHAIN (EBBE)**

CHANGE: 6.5 DME on the final added and LDA updated

BEL DEFENCE, AIR COMPONENT 24-MAR-2022 - THS