

MIPS
INSTRUMENT APPROACH CHART

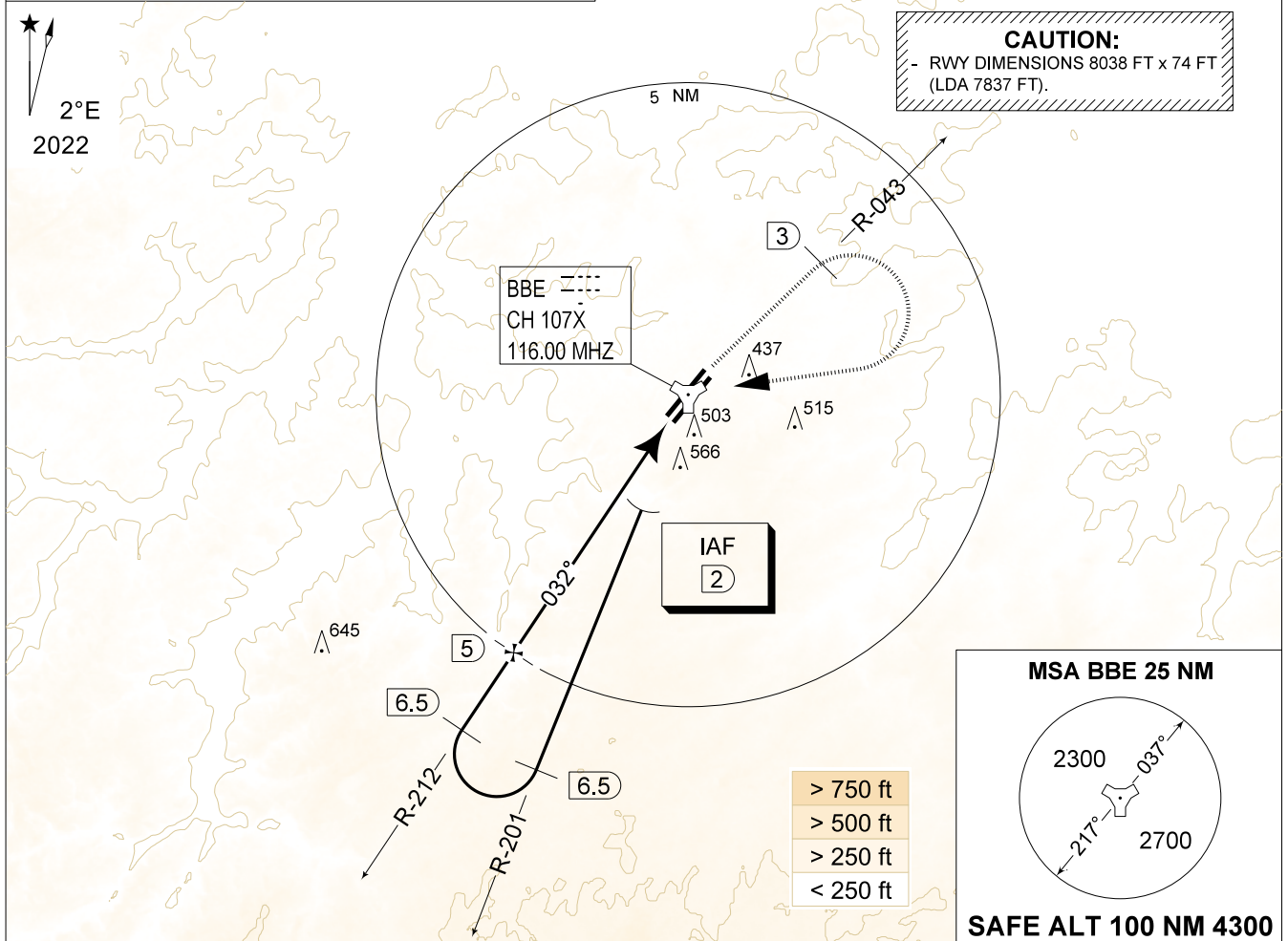
AD ELEV 362

TACAN RWY 04R
BEAUVECHAIN (EBBE)

| | | | | | | | |
|-------------|------------|-----------------|------------|-----------------|---------|-----------------|---------|
| BELGA RADAR | | BEAUVECHAIN APP | | BEAUVECHAIN TWR | | BEAUVECHAIN GND | |
| 374.400 | 129.325 | 282.100 | 122.830 | 231.500 | 130.730 | 359.825 | 121.855 |
| TACAN | APP COURSE | FAF ALT | DESCENT GR | MDA | THR | ALS | LDA |
| BBE CH107X | 032° | 1800 FT | 5.24%(3°) | 820 | 362 FT | 260 M | 7837 FT |

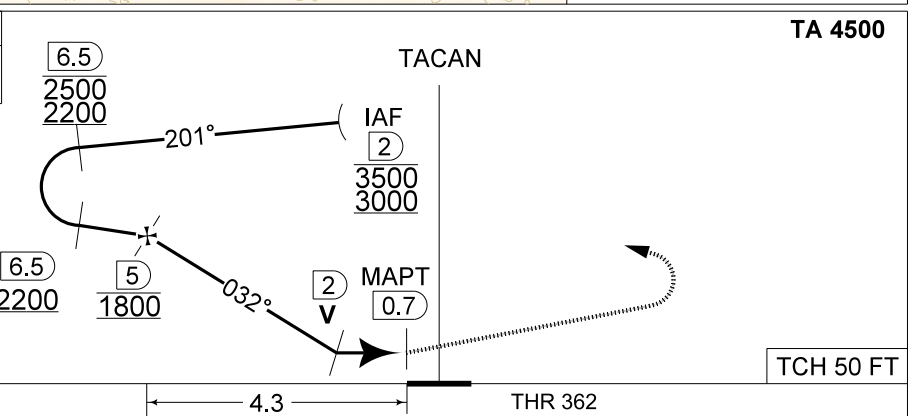
NOTE:
a) IF IAF IS ABOVE 3000 FT, ATC COORDINATION WITH BRUSSELS ACC IS REQUIRED

IAF
50°43.57'N
004°44.89'E



| | | | | |
|----------|--------|--------|-------|-------|
| DME BBE | 5 | 4 | 3 | 2 |
| Altitude | 1800 | 1480 | 1160 | 840 |
| Height | (1438) | (1118) | (798) | (478) |

MISSED APPROACH
Climb to 1000 FT RWY track and intercept R-043. At 2 DME past TACAN climb to 3000 FT. Passing 1500 FT or 3 DME whichever comes the latest, turn right inbound BBE TACAN and proceed back to IAF.



| | | | | |
|-----------|---|--|--|--|
| S-ALS | | | | |
| CATEGORY | A | | | |
| S-TAC 04R | 820 - 1.5 458 (500 - 1.5 / 2.4) | | | |
| S-PAR 04R | 578 - 0.8 216 (300 - 0.8 / 1.0) GS 3.00° | | | |

CHANGE: Minima updated

BEL DEFENCE, AIR COMPONENT 06-OCT-2022 - THS