

MIPS
INSTRUMENT APPROACH CHART

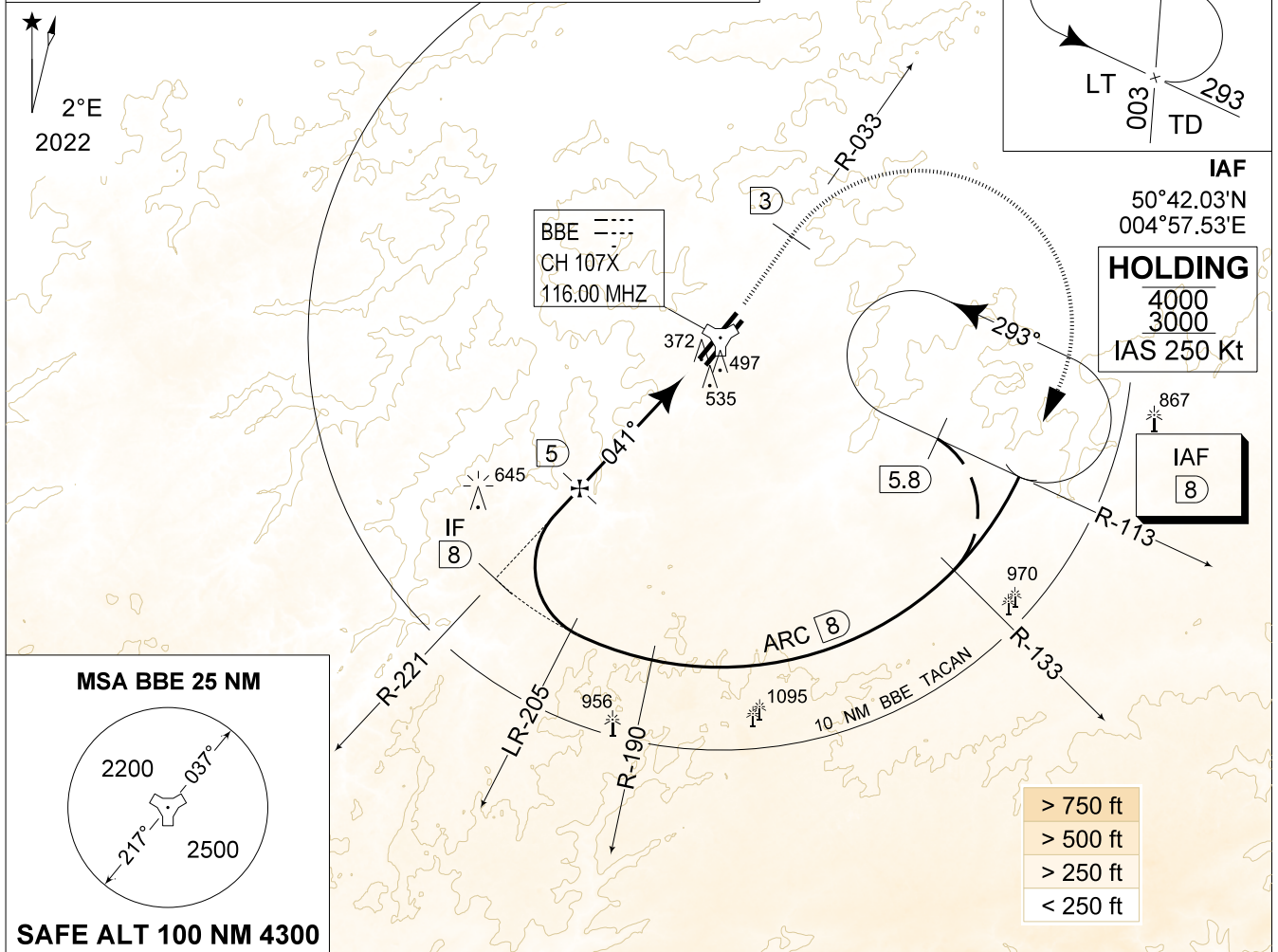
TACAN z RWY 04L
BEAUVECHAIN (EBBE)

AD ELEV 362

BELGA RADAR 374.400 129.325		BEAUVECHAIN APP 282.100 122.830		BEAUVECHAIN TWR 362.025 130.730		BEAUVECHAIN GND 359.825 121.855	
TACAN BBE CH107X	APP COURSE 041°	FAF ALT 1800 FT	DESCENT GR 5.24%(3°)	MDA 770	THR 349 FT	ALS 930 M	LDA 7959 FT

NOTE:

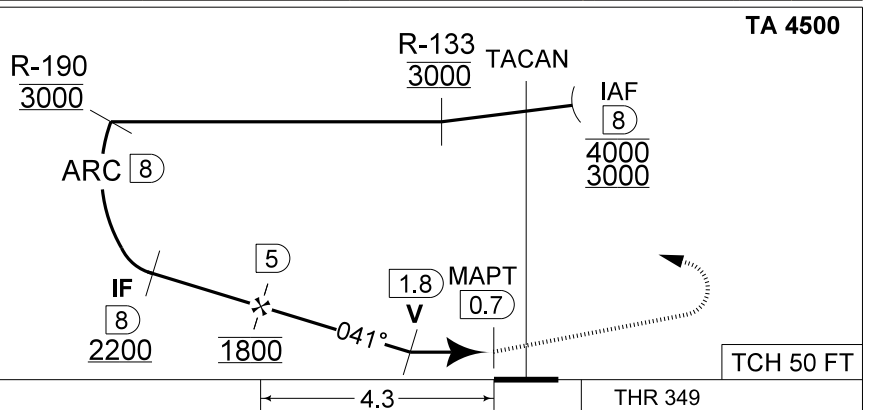
a) HOLDING AT 4000 FT UNDER RADAR CONTROL MANDATORY



DME BBE	5	4	3	2
Altitude	1790	1470	1150	830
Height	(1441)	(1121)	(801)	(481)

MISSED APPROACH

Climb to 1000 FT RWY track and intercept R-033. At 2 DME past TACAN climb to 3000 FT. Passing 1500 FT or 3 DME whichever comes the latest, turn right at MAX 250 KIAS (MAX 300 KIAS for HPMA) to intercept R-113 towards IAF.



CAT I

CATEGORY	A	B	C	D	HPMA
S-TAC 04L	770 - 1.3 421 (500 - 1.3 / 2.2)				
S-PAR 04L	580 - 0.8 231 (300 - 0.8 / 1.1) GS 3°	592 - 0.8 243 (300 - 0.8 / 1.2) GS 3°	600 - 0.8 251 (300 - 0.8 / 1.2) GS 3°	611 - 0.8 262 (300 - 0.8 / 1.3) GS 3°	549 - 0.8 200 (200 - 0.8 / 0.9) GS 3°

TACAN z RWY 04L

50°45.47' N
004°46.02' E

BEAUVECHAIN (EBBE)

CHANGE: Track BTN R-190 and IAF in the profile view updated

BEL DEFENCE, AIR COMPONENT 07-SEP-2023 -THS