

MIPS
INSTRUMENT APPROACH CHART

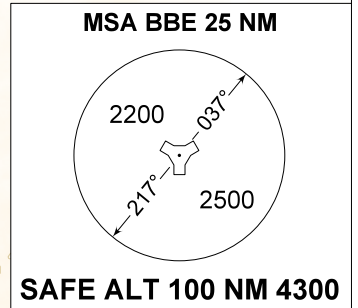
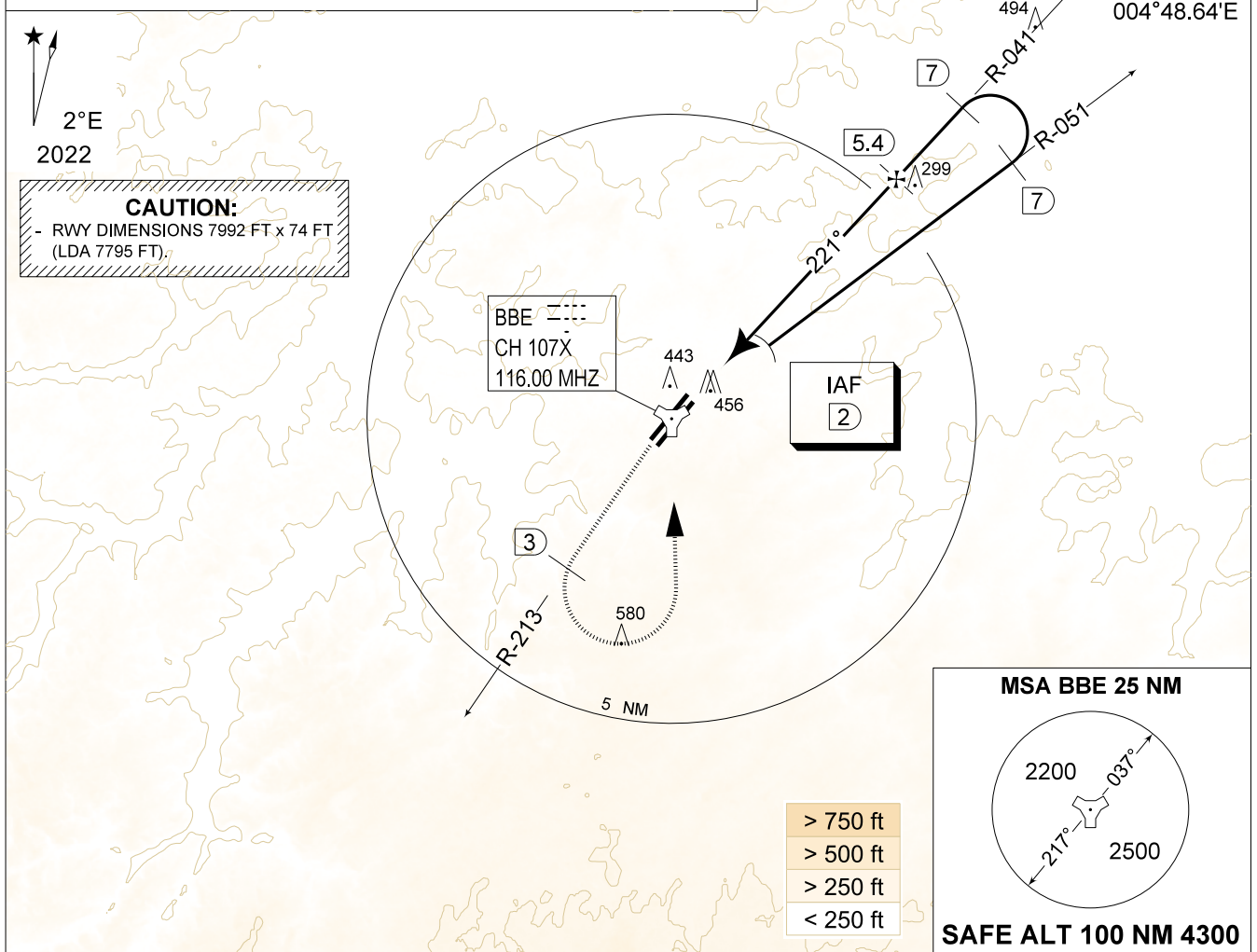
AD ELEV 362

TACAN RWY 22L
BEAUVECHAIN (EBBE)

BELGA RADAR 374.400 129.325		BEAUVECHAIN APP 282.100 122.830		BEAUVECHAIN TWR 362.025 130.730		BEAUVECHAIN GND 359.825 121.855	
TACAN BBE CH107X	APP COURSE 221°	FAF ALT 1900 FT	DESCENT GR 5.24%(3°)	MDA 710	THR 316 FT	ALS 260 M	LDA 7795 FT

CAUTION:
a) TREES UP TO 110 FT AGL AT SHORT FINAL EAST OF THR 22L.

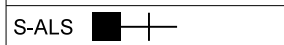
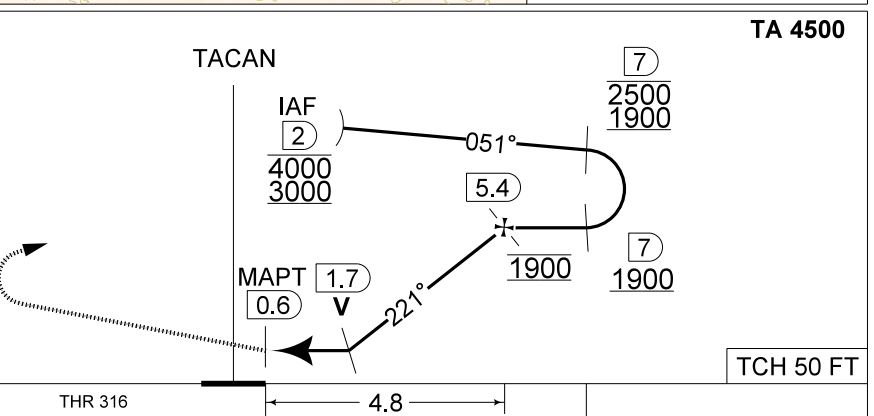
IAF
50°46.61'N
004°48.64'E



> 750 ft
> 500 ft
> 250 ft
< 250 ft

DME BBE	5	4	3	2
Altitude	1780	1460	1140	820
Height	(1463)	(1143)	(823)	(503)

MISSED APPROACH
Climb to 1000 FT RWY track and intercept R-213. At 2 DME past TACAN climb to 3000 FT. Passing 1500 FT or 3 DME whichever comes the latest, turn left inbound BBE TACAN and proceed back to IAF TACAN RWY 22L.



CATEGORY	A
S-TAC 22L	710 - 1.5 394 (400 - 1.5 / 2.1)
S-PAR 22L	534 - 0.8 218 (300 - 0.8 / 1.0) GS 3.00°

TACAN RWY 22L 50°45.47' N 004°46.02' E **BEAUVECHAIN (EBBE)**

CHANGE: Editorial

MIPS

BEL DEFENCE, AIR COMPONENT 13-JUN-2024 -THS