

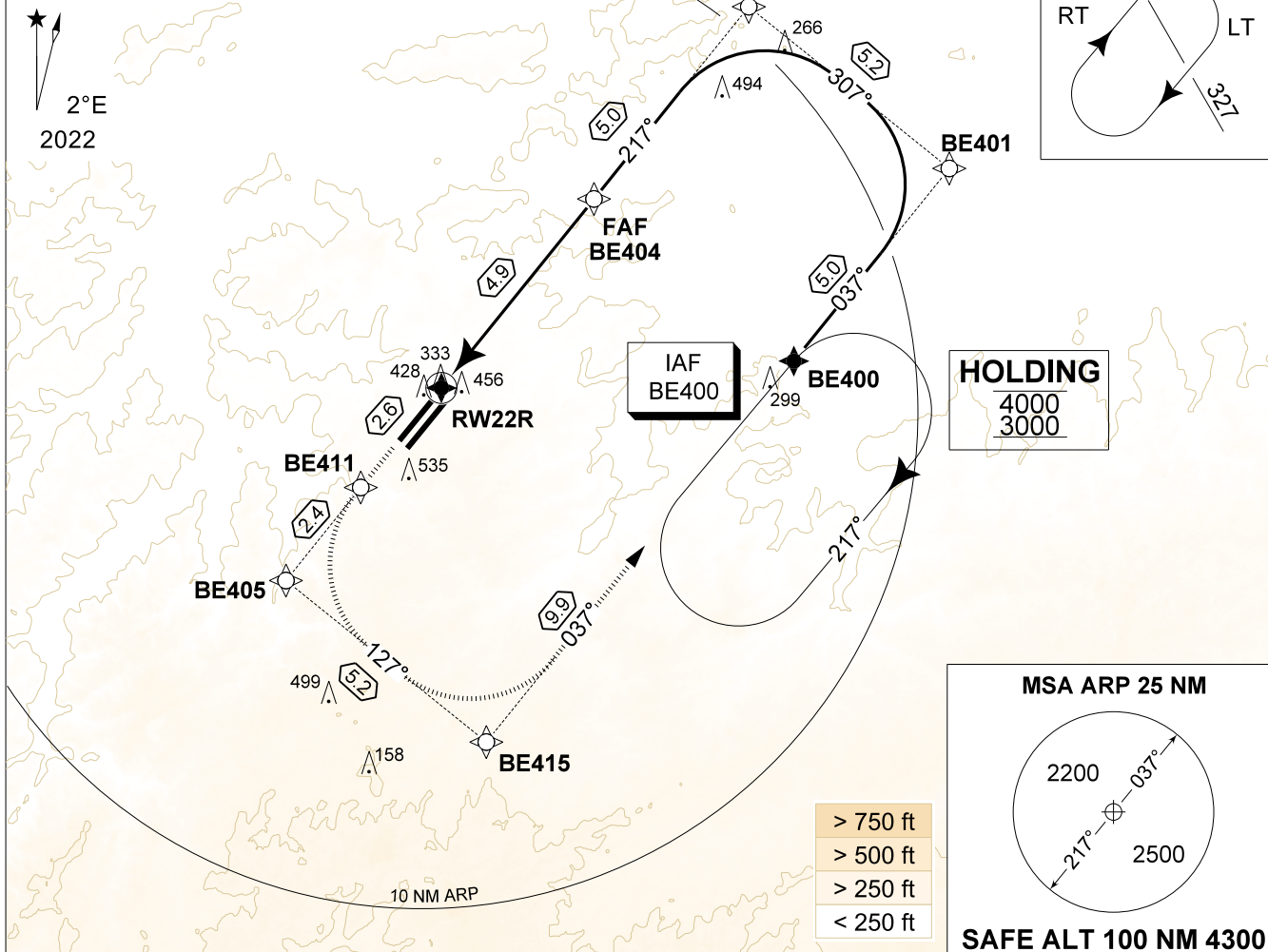
MIPS
INSTRUMENT APPROACH CHART

RNP RWY 22R
BEAUVECHAIN (EBBE)

AD ELEV 362

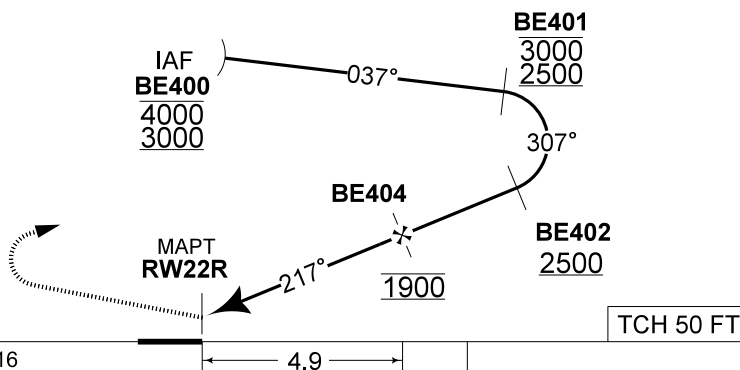
BELGA RADAR 374.400 129.325		BEAUVECHAIN APP 282.100 122.830		BEAUVECHAIN TWR 362.025 130.730		BEAUVECHAIN GND 359.825 121.855	
EGNOS CH E22B 59329	APP CRS 217°	FAF ALT 1900 FT	Descent GR 5.24% (3°)	DA 515	THR 315 FT	ALS 930 M	LDA 7988 FT

NOTE:
a) BARO-VNAV OPS NOT AUTHORIZED BELOW -20°C



THR 22R	4	3	2
Altitude	1640	1330	1010
Height	(1324)	(1014)	(694)

MISSED APPROACH
MAX SPEED 190 KIAS.
Climb to 1000 FT inbound BE411 then continue climbing inbound BE405 then BE415 to reach IAF BE400 at 3000 FT.



CAT I

THR 316

4.9

TCH 50 FT

CATEGORY	A - B - C - H
LPV 22R	515 - 0.8 200 (200 - 0.8 / 0.9) GS 3.0°
LNAV/VNAV 22R	606 - 0.8 291 (300 - 0.8 / 1.5) GS 3.0°
LNAV 22R	710 - 1.1 395 (400 - 1.1 / 2.1)

RNP RWY 22R

50°45.47' N
004°46.02' E

BEAUVECHAIN (EBBE)

CHANGE: Note updated and resize plan view

BEL DEFENCE, AIR COMPONENT 13-JUN-2024 -THS