

MIPS
INSTRUMENT APPROACH CHART

AD ELEV 362

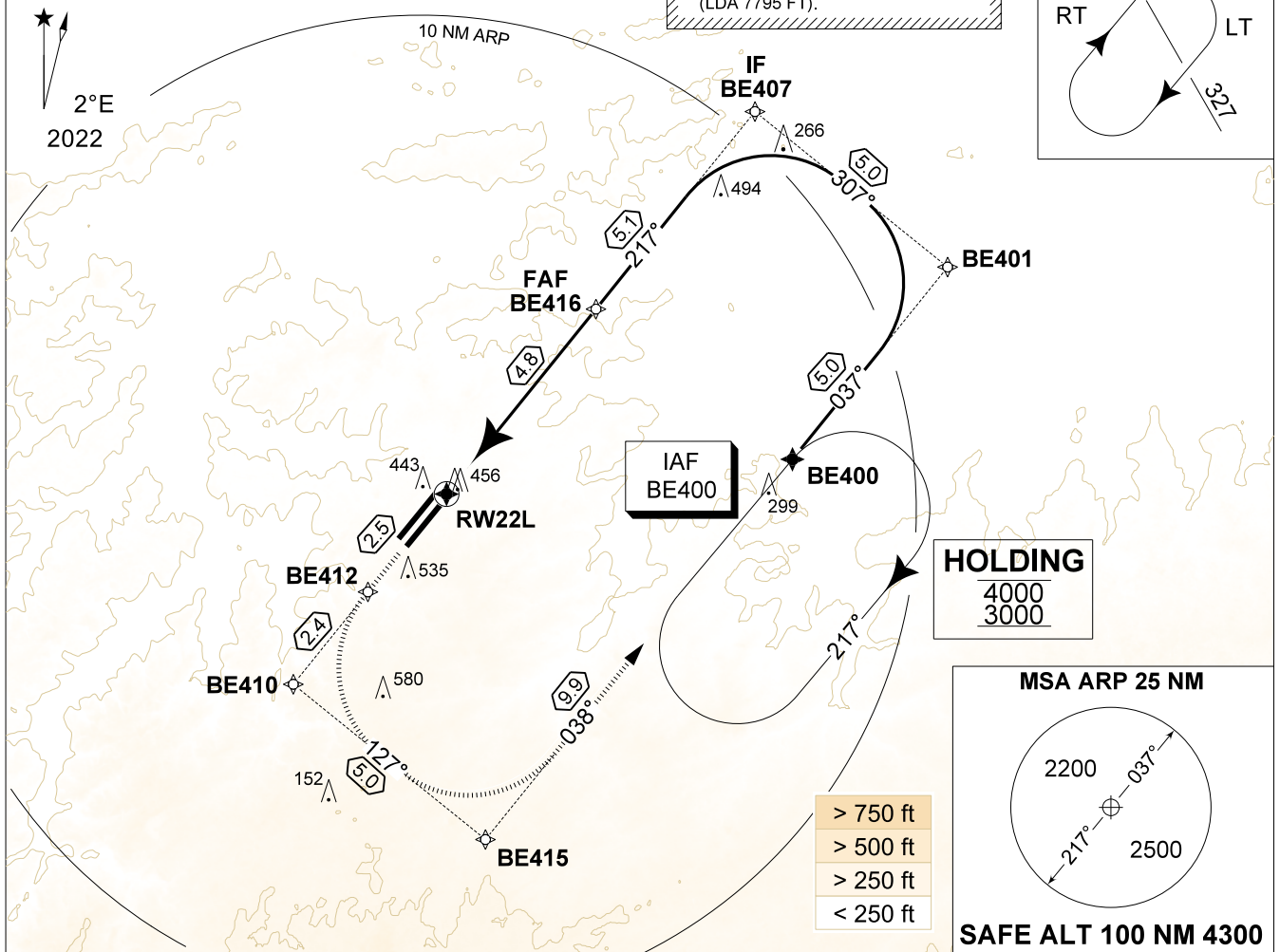
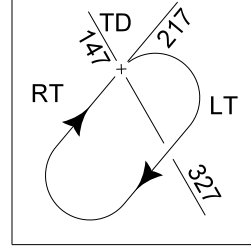
RNP RWY 22L
BEAUVECHAIN (EBBE)

BELGA RADAR 374.400 129.325		BEAUVECHAIN APP 282.100 122.830		BEAUVECHAIN TWR 362.025 130.730		BEAUVECHAIN GND 359.825 121.855	
EGNOS CH E22A 41738	APP COURSE 217°	FAF ALT 1900 FT	DESCENT GR 5.24%(3°)	DA 516	THR 316 FT	ALS 260 M	LDA 7795 FT

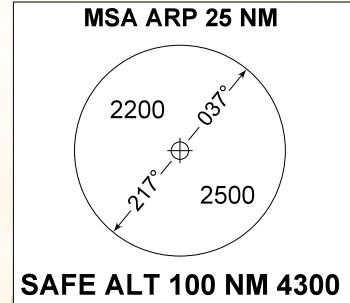
NOTE:

a) BARO-VNAV OPS NOT AUTHORIZED BELOW -20°C

CAUTION:
- RWY DIMENSIONS 7992 FT x 74 FT
(LDA 7795 FT).

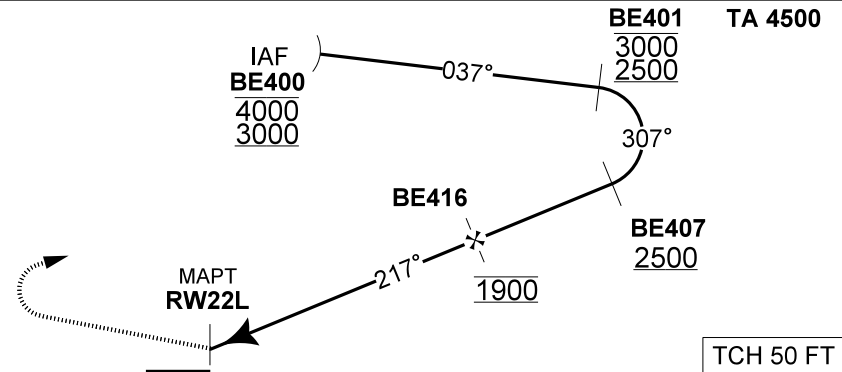


HOLDING
4000
3000



THR 22L	4	3	2
Altitude	1650	1330	1010
Height	(1333)	(1013)	(693)

MISSED APPROACH
MAX SPEED 190 KIAS.
Climb to 1000 FT inbound BE412 then continue climbing inbound BE410 then BE415 to reach IAF BE400 at 3000 FT.



CATEGORY	A	B	C	H
LPV 22L	516 - 0.8 200 (200 - 0.8 / 0.9) GS 3.00°			
LNAV/VNAV 22L	626 - 1.3 310 (400 - 1.3 / 1.6) GS 3.00°			
LNAV 22L	710 - 1.5 394 (400 - 1.5 / 2.1)	710 - 1.8 394 (400 - 1.8 / 2.1)	710 - 1.5 394 (400 - 1.5 / 2.1)	710 - 1.5 394 (400 - 1.5 / 2.1)

RNP RWY 22L 50°45.47' N **BEAUVECHAIN (EBBE)**
004°46.02' E

CHANGE: Note updated and resize plan view

BEL DEFENCE, AIR COMPONENT 13-JUN-2024 -THS