

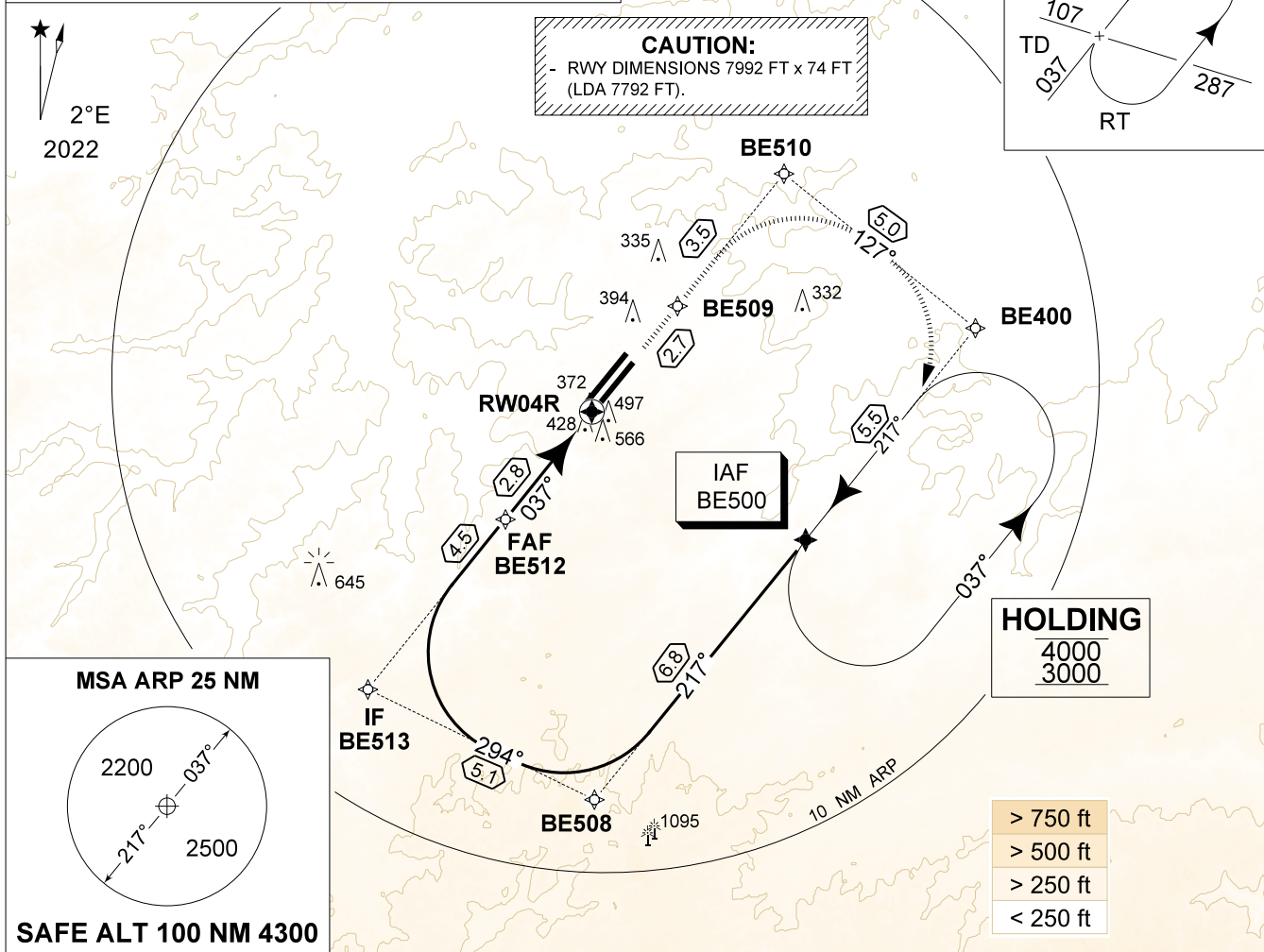
MIPS
INSTRUMENT APPROACH CHART

RNP RWY 04R
BEAUVECHAIN (EBBE)

AD ELEV 362

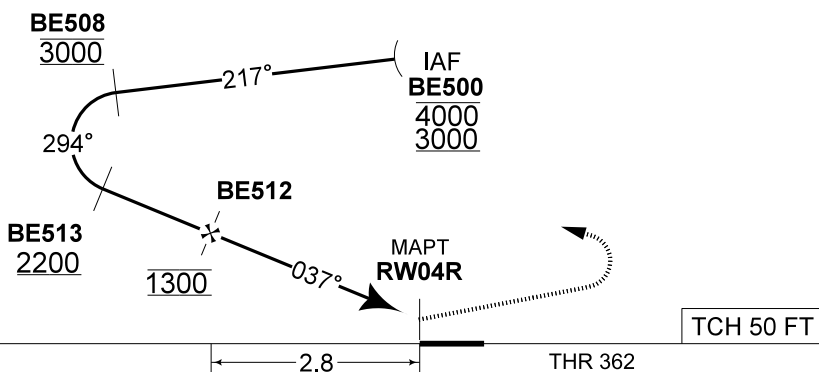
| | | | | | | | |
|--------------------------------|-----------------|------------------------------------|--------------------------|------------------------------------|---------------|------------------------------------|----------------|
| BELGA RADAR 374.400 129.325 | | BEAUVECHAIN APP 282.100 122.830 | | BEAUVECHAIN TWR 362.025 130.730 | | BEAUVECHAIN GND 359.825 121.855 | |
| EGNOS CH E04B 44251 | APP CRS 037° | FAF ALT 1300 FT | Descent GR 5.24% (3°) | DA 562 | THR 362 FT | ALS 260 M | LDA 7792 FT |

NOTE:
a) BARO-VNAV OPS NOT AUTHORIZED BELOW 20°C



| | | | |
|----------|-------|-------|-------|
| THR 04R | 2.8 | 2.5 | 2 |
| Altitude | 1310 | 1210 | 1050 |
| Height | (948) | (848) | (688) |

MISSED APPROACH
MAX SPEED 190 KIAS.
Climb to 1000 FT inbound BE509 then continue climbing inbound BE510 then BE400 to reach IAF BE500 at 3000 FT.



| | | |
|-------|-----|---------|
| S-ALS | 2.8 | THR 362 |
|-------|-----|---------|

| CATEGORY | A | B | C | H |
|---------------|---|--|--|---|
| LPV 04R | 562 - 0.8 200 (200 - 0.8 / 0.9) GS 3.00° | | | |
| LNAV/VNAV 04R | 701 - 1.4 339 (400 - 1.4 / 1.7) GS 3.00° | | | |
| LNAV 04R | 790 - 1.5 428 (500 - 1.5 / 2.2) | 790 - 1.9 428 (500 - 1.9 / 2.2) | 790 - 1.5 428 (500 - 1.5 / 2.2) | |

RNP RWY 04R

50°45.47' N
004°46.02' E

BEAUVECHAIN (EBBE)

CHANGE: Note updated and resize plan view

BEL DEFENCE, AIR COMPONENT 13-JUN-2024 -THS