

MIPS
INSTRUMENT DEPARTURE CHART

AD ELEV 362

HPMA BE 04A - 04B
BEAUVECHAIN (EBBE)

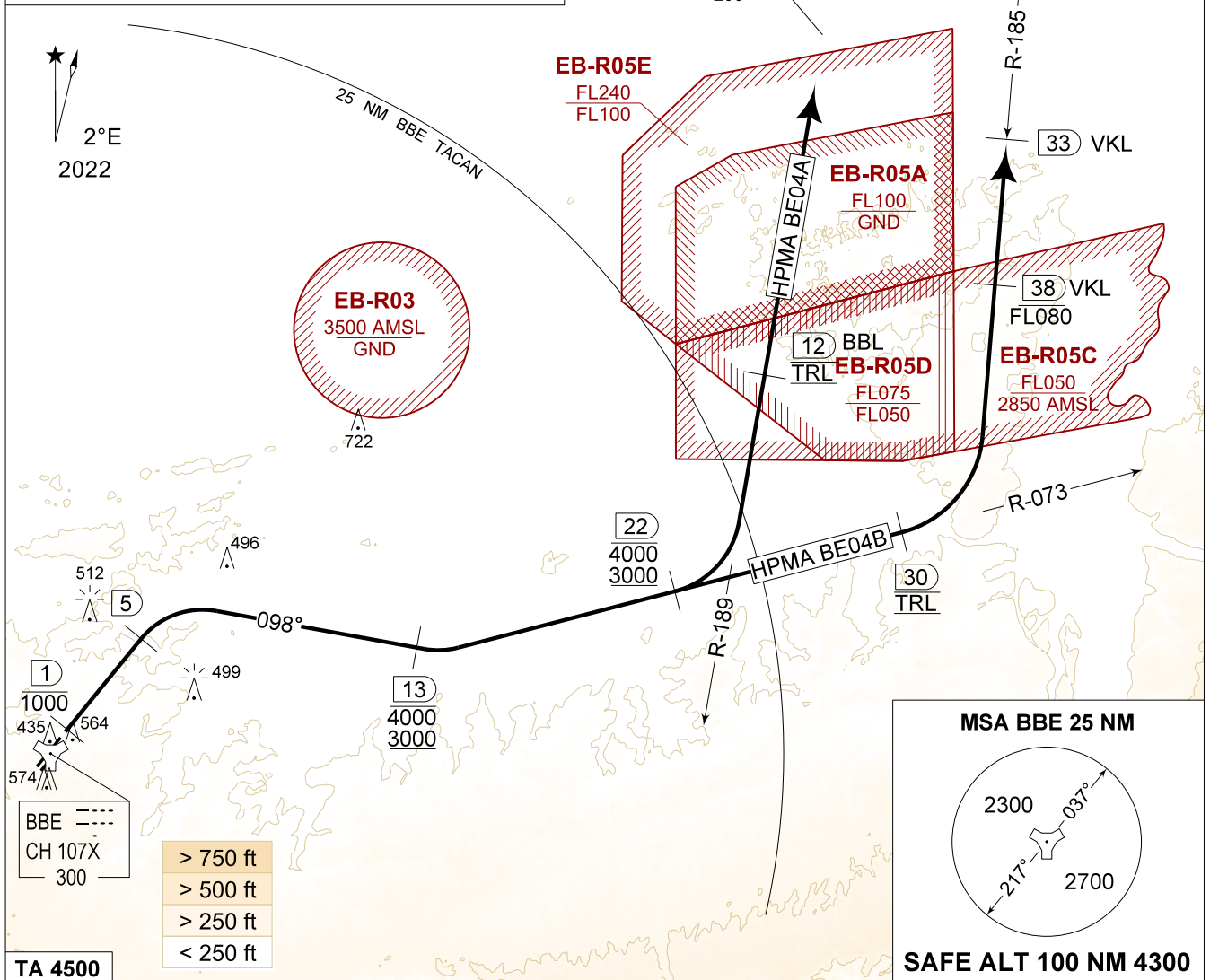
BEAUVECHAIN GND 359.825 121.855		BEAUVECHAIN TWR 231.500 130.730		BEAUVECHAIN APP 282.100 122.830		BELGA RADAR 374.400 129.325				
TACAN BBE - CH 107X		RWY 04L	PDG 8.75%	5.00°	From-To DER-3000	120 1070	180 1600	240 2130	300 2660	Reason HPMA

NOTE:

- MAX 300 KT IAS.

CAUTION:

- a** BE 04A CAN ONLY BE EXECUTED IF EB-R05A, EB-R05C & EB-R05D ARE NOT ACTIVE.



HPMA BE 04 (RWY 04L)	<ul style="list-style-type: none"> - Climb on track 037° (MAX 300 KT IAS) and contact EBBE APP. - Pass 1 DME at or below 1000 FT. - At 5 DME turn right and track 098° to intercept R-073 BBE TACAN outbound. - Pass R-073 13 DME and 22 DME at 3000 FT AMSL or 4000 FT AMSL as instructed. - Contact BELGA RADAR.
A a 44	<ul style="list-style-type: none"> - At 22 DME / R-073 turn left to intercept R-189 inbound BBL TACAN. - Pass 12 DME / R-189 BBL at TRL. - Climb as directed.
B 47	<ul style="list-style-type: none"> - Pass 30 DME / R-073 at TRL and then turn left to intercept R-185 inbound VKL TACAN. - Pass 38 DME / R-185 VKL at or below FL80. - Climb as directed.

HPMA BE 04A - 04B

50°45.47' N
004°46.02' E

BEAUVECHAIN (EBBE)

CHANGE: MAGVAR, HPMA added in the track label

BEL DEFENCE, AIR COMPONENT 24-FEB-2022 - THS