

**MIPS**

**INSTRUMENT DEPARTURE CHART**

AD ELEV 362

**HPMA BE 04A - 04B  
BEAUVECHAIN (EBBE)**

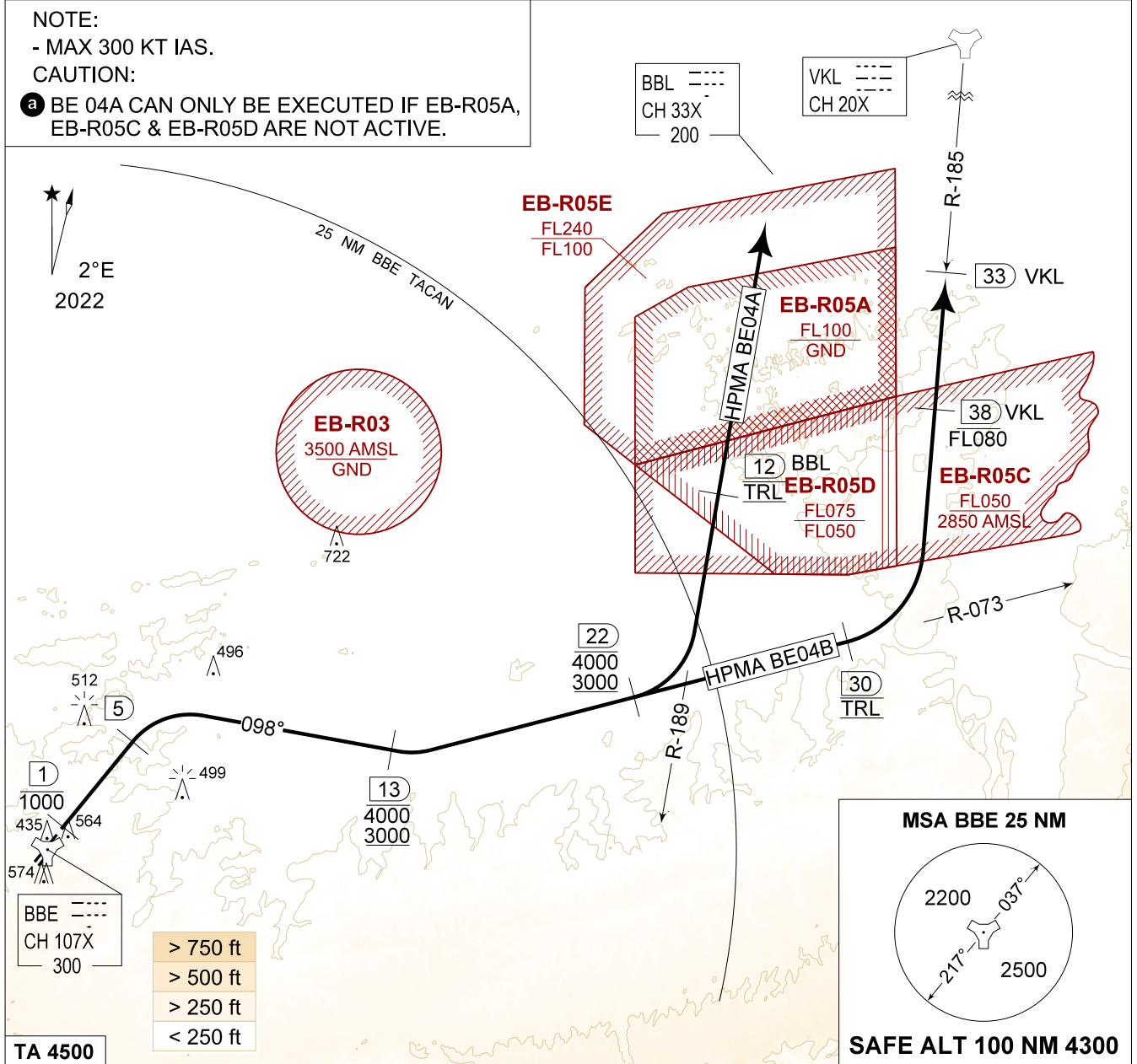
BEAUVECHAIN GND 359.825 121.855		BEAUVECHAIN TWR 362.025 130.730		BEAUVECHAIN APP 282.100 122.830		BELGA RADAR 374.400 129.325				
TACAN BBE - CH 107X		RWY 04L	PDG 8.75%	5.00°	From-To DER-3000	120 1070	180 1600	240 2130	300 2660	Reason HPMA

**NOTE:**

- MAX 300 KT IAS.

**CAUTION:**

- a** BE 04A CAN ONLY BE EXECUTED IF EB-R05A, EB-R05C & EB-R05D ARE NOT ACTIVE.



<b>HPMA BE 04 (RWY 04L)</b>	<ul style="list-style-type: none"> <li>- Climb on track 037° (MAX 300 KT IAS) and contact EBBE APP.</li> <li>- Pass 1 DME at or below 1000 FT.</li> <li>- At 5 DME turn right and track 098° to intercept R-073 BBE TACAN outbound.</li> <li>- Pass R-073 13 DME and 22 DME at 3000 FT AMSL or 4000 FT AMSL as instructed.</li> <li>- Contact BELGA RADAR.</li> </ul>
<b>A a</b> 44	<ul style="list-style-type: none"> <li>- At 22 DME / R-073 turn left to intercept R-189 inbound BBL TACAN.</li> <li>- Pass 12 DME / R-189 BBL at TRL.</li> <li>- Climb as directed.</li> </ul>
<b>B</b> 47	<ul style="list-style-type: none"> <li>- Pass 30 DME / R-073 at TRL and then turn left to intercept R-185 inbound VKL TACAN.</li> <li>- Pass 38 DME / R-185 VKL at or below FL80.</li> <li>- Climb as directed.</li> </ul>

**HPMA BE 04A - 04B**

50°45.47' N  
004°46.02' E

**BEAUVECHAIN (EBBE)**

CHANGE: TWR FREQ. and MSA updated

BEL DEFENCE, AIR COMPONENT 07-SEP-2023 - THS