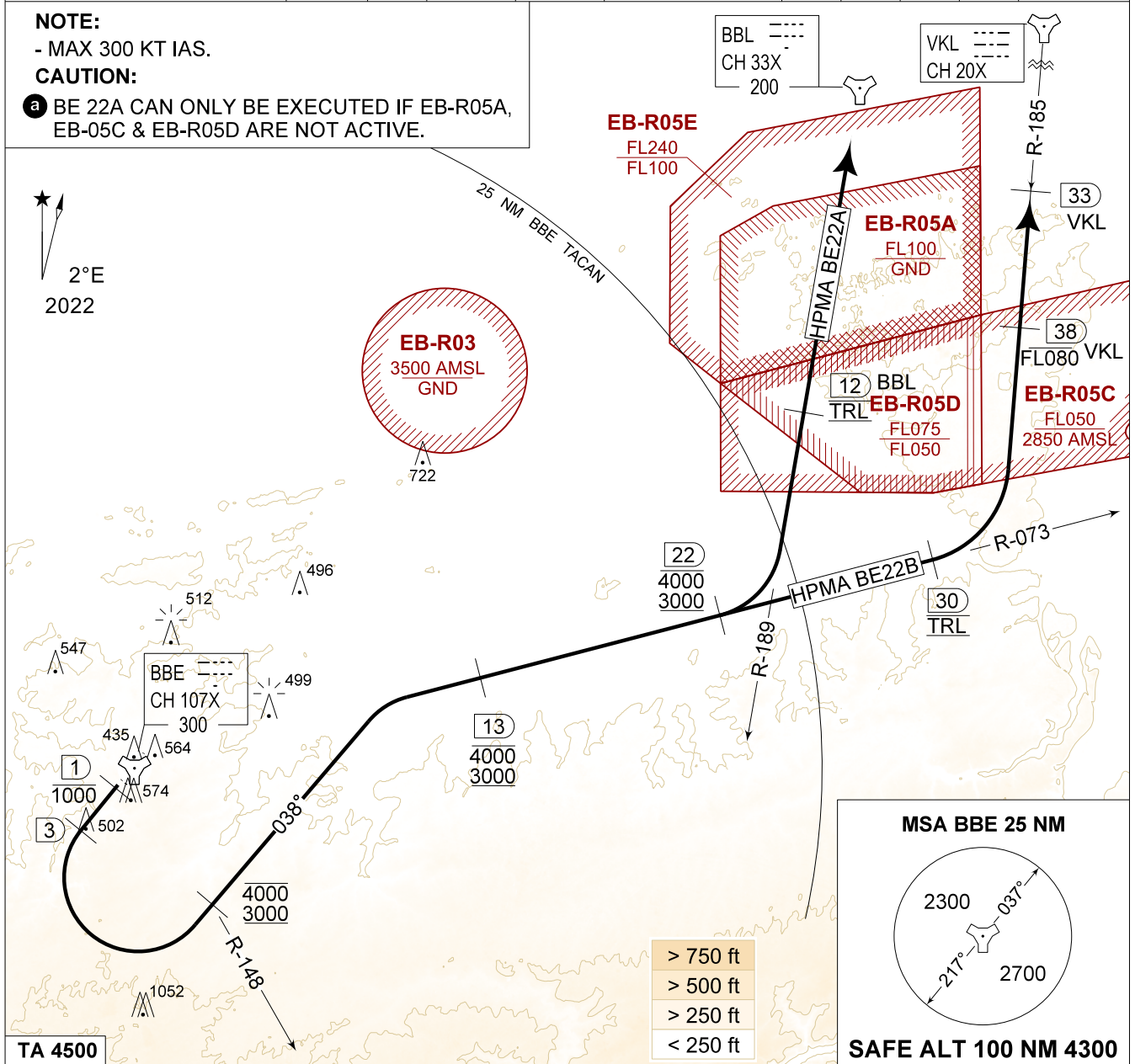


MIPS **HPMA BE 22A - 22B**
INSTRUMENT DEPARTURE CHART **AD ELEV 362** **BEAUVECHAIN (EBBE)**

BEAUVECHAIN GND 359.825 121.855		BEAUVECHAIN TWR 231.500 130.730		BEAUVECHAIN APP 282.100 122.830		BELGA RADAR 374.400 129.325				
TACAN BBE - CH 107X		RWY 22R	PDG 8.75%	5.00°	From-To DER-4000	120 1070	180 1600	240 2130	300 2660	Reason HPMA

NOTE:
- MAX 300 KT IAS.
CAUTION:

a BE 22A CAN ONLY BE EXECUTED IF EB-R05A, EB-05C & EB-R05D ARE NOT ACTIVE.



TA 4500	
HPMA BE 22 (RWY 22R)	<ul style="list-style-type: none"> - Climb on track 217° (MAX 300 KT IAS) and contact EBBE APP. - Pass 1 DME at or below 1000 FT. At 3 DME turn left on track 038°. - Pass R-148 at 3000 FT or 4000 FT as instructed. - Intercept R-073 BBE TACAN outbound. - Pass 13 DME and 22 DME at 3000 FT AMSL or 4000 FT AMSL instructed. - Contact BELGA RADAR.
A a 55	<ul style="list-style-type: none"> - At 22 DME / R-073 turn left to intercept R-189 inbound BBL TACAN. - Pass 12 DME / R-189 BBL at TRL. - Climb as directed.
B 58	<ul style="list-style-type: none"> - Pass 30 DME / R-073 at TRL and then turn left to intercept R-185 inbound VKL TACAN. - Pass 38 DME / R-185 VKL at or below FL080. - Climb as directed.

HPMA BE 22A - 22B **BEAUVECHAIN (EBBE)**

50°45.47' N
004°46.02' E

CHANGE: MAGVAR, HPMA added in the track label

BEL DEFENCE, AIR COMPONENT 24-FEB-2022 - THS