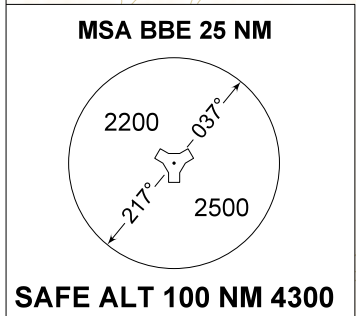
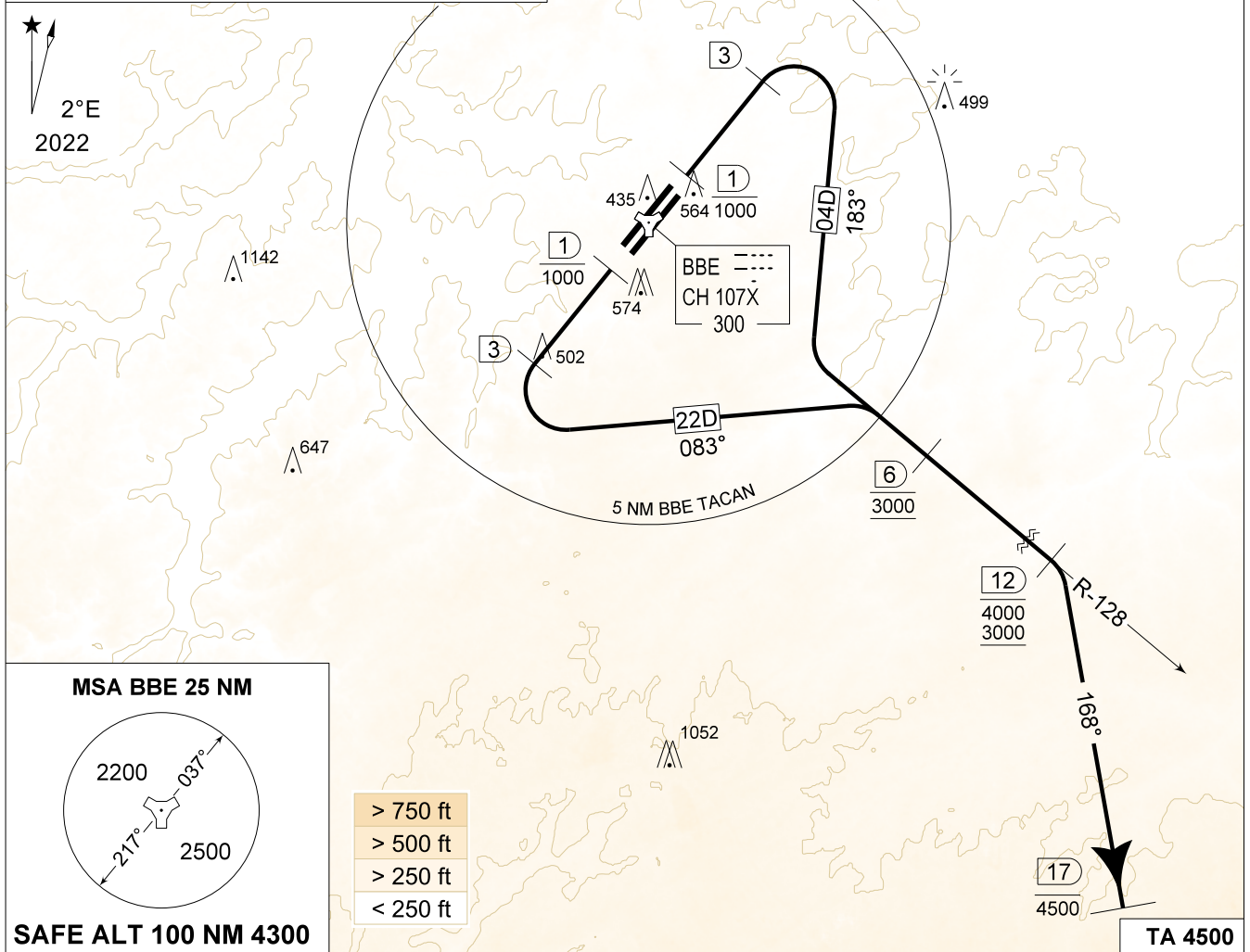


MIPS **BE 04D - 22D**
INSTRUMENT DEPARTURE CHART AD ELEV 362 **BEAUVECHAIN (EBBE)**

| | | | | | | | | |
|------------------------------------|------------------------------------|------------------------------------|--------------------------------|-----------|-----------|------------|------------|----------------------|
| BEAUVECHAIN GND 359.825 121.855 | BEAUVECHAIN TWR 362.025 130.730 | BEAUVECHAIN APP 282.100 122.830 | BELGA RADAR 374.400 130.580 | | | | | |
| TACAN BBE - CH 107X | RWY 04 | PDG 4,1% 2,35° | From-To DER-4000 | 60 250 | 90 380 | 120 500 | 150 630 | Reason ATC |
| NOTE: | 22 | 4,1% 2,35° | DER-4000 | 250 | 380 | 500 | 630 | ATC |

- a) ONLY FOR CAT A.
- b) DEPARTURE RWY 04L / 22R AUTHORIZED.
- c) CLOSE-IN OBSTACLES NOT CONSIDERED TO DETERMINE THE PDG.

| | | |
|----------------|-----------------|-------------|
| 50°46'24.83" N | 004°46'57.55" E | 415 FT AMSL |
| 50°45'46.78" N | 004°46'58.85" E | 371 FT AMSL |
| 50°44'25.49" N | 004°44'58.64" E | 440 FT AMSL |



| | |
|--|---|
| <p>BE 04D (RWY 04)</p> <p style="text-align: center;">(24)</p> | <ul style="list-style-type: none"> - Climb on track 037° (MAX 120 KT IAS) and contact EBBE APP. - Pass 1 DME at or below 1000 FT. - At 3 DME turn right on track 183° to intercept R-128 outbound. - Pass 6 DME / R-128 at 3000 FT AMSL. - Pass 12 DME / R-128 between 3000 FT and 4000 FT turn right on track 168°. Climb as directed. - Pass 17 DME at or below 4500 FT AMSL and contact BELGA RADAR. |
| <p>BE 22D (RWY 22)</p> <p style="text-align: center;">(24)</p> | <ul style="list-style-type: none"> - Climb on track 217° (MAX 120 KT IAS) and contact EBBE APP. - Pass 1 DME at or below 1000 FT. - At 3 DME turn left on track 083° to intercept R-128 outbound. - Pass 6 DME / R-128 at 3000 FT AMSL. - Pass 12 DME / R-128 between 3000 FT and 4000 FT turn right on track 168°. Climb as directed. - Pass 17 DME at or below 4500 FT AMSL and contact BELGA RADAR. |

BE 04D - 22D 50°45.47' N
004°46.02' E **BEAUVECHAIN (EBBE)**

BEL DEFENCE, AIR COMPONENT 13-JUN-2024 - THS

CHANGE: Scaling plan view