

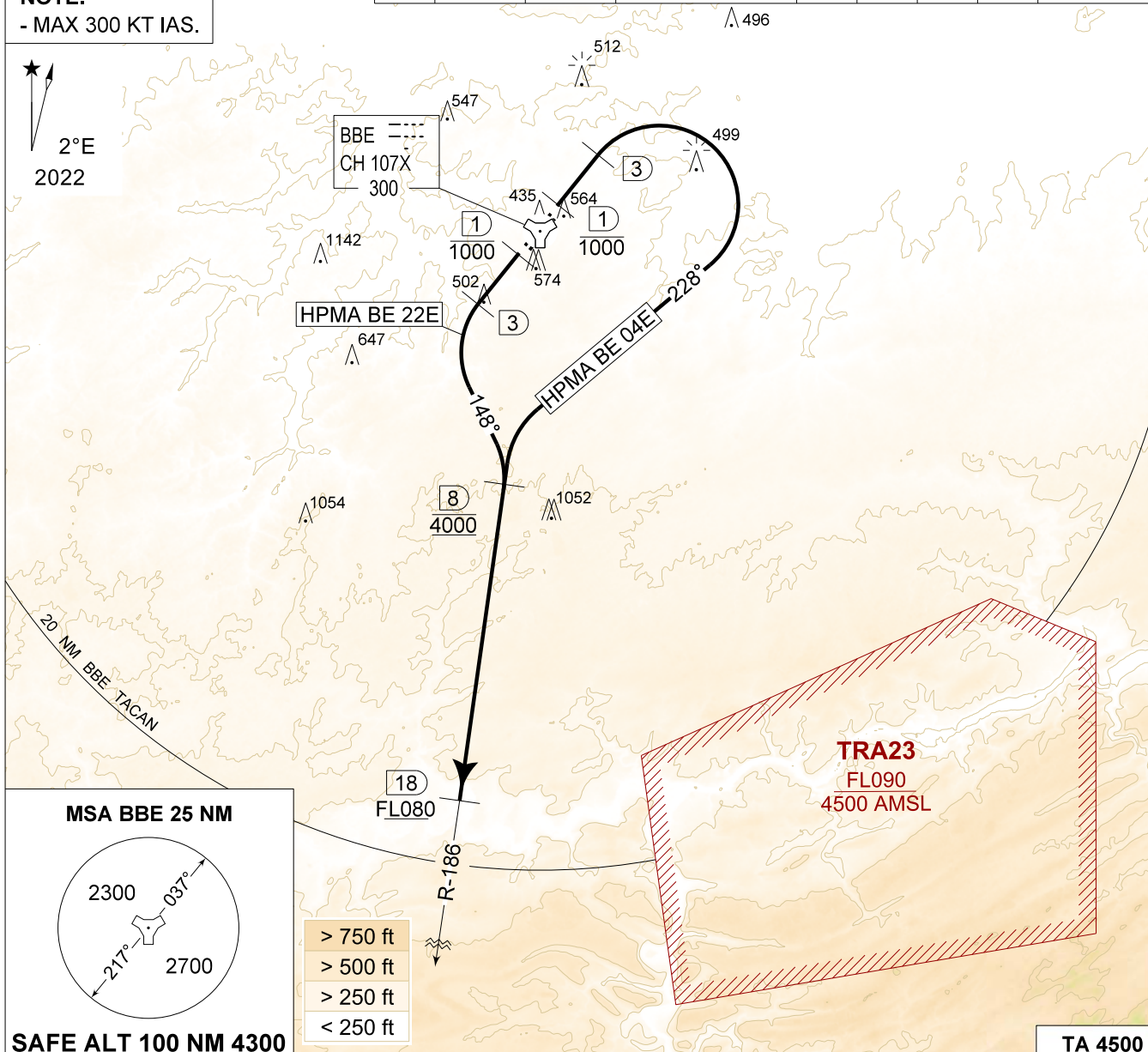
MIPS
INSTRUMENT DEPARTURE CHART

AD ELEV 362

HPMA BE 04E - 22E
BEAUVECHAIN (EBBE)

BEAUVECHAIN GND 359.825 121.855	BEAUVECHAIN TWR 231.500 130.730	BEAUVECHAIN APP 282.100 122.830	BELGA RADAR 374.400 129.325						
TACAN BBE - CH 107X	RWY	PDG	From-To	120	180	240	300	Reason	
	04L	8.75%	5.00°	DER-4000	1070	1600	2130	2660	HPMA
	22R	8.75%	5.00°	DER-4000	1070	1600	2130	2660	HPMA

NOTE:
- MAX 300 KT IAS.



<p>HPMA BE 04E (RWY 04L)</p> <p>(31)</p>	<ul style="list-style-type: none"> - Climb on track 037° (MAX 300 KT IAS) and contact EBBE APP. - Pass 1 DME at or below 1000 FT. - At 3 DME turn right on track 228° to intercept R-186 outbound. - Pass 8 DME / R-186 at 4000 FT AMSL. - Contact BELGA RADAR passing 4500 FT AMSL. - Pass 18 DME / R-186 at FL080 or above. Climb as directed.
<p>HPMA BE 22E (RWY 22R)</p> <p>(19)</p>	<ul style="list-style-type: none"> - Climb on track 217° (MAX 300 KT IAS) and contact EBBE APP. - Pass 1 DME at or below 1000 FT. - At 3 DME turn left on track 148° to intercept R-186 outbound. - Pass 8 DME / R-186 at 4000 FT AMSL. - Contact BELGA RADAR passing 4500 FT AMSL. - Pass 18 DME / R-186 at FL080 or above. Climb as directed.

HPMA BE 04E - 22E

50°45.47' N
004°46.02' E

BEAUVECHAIN (EBBE)

CHANGE: Editorial

BEL DEFENCE, AIR COMPONENT 24-FEB-2022 - THS