

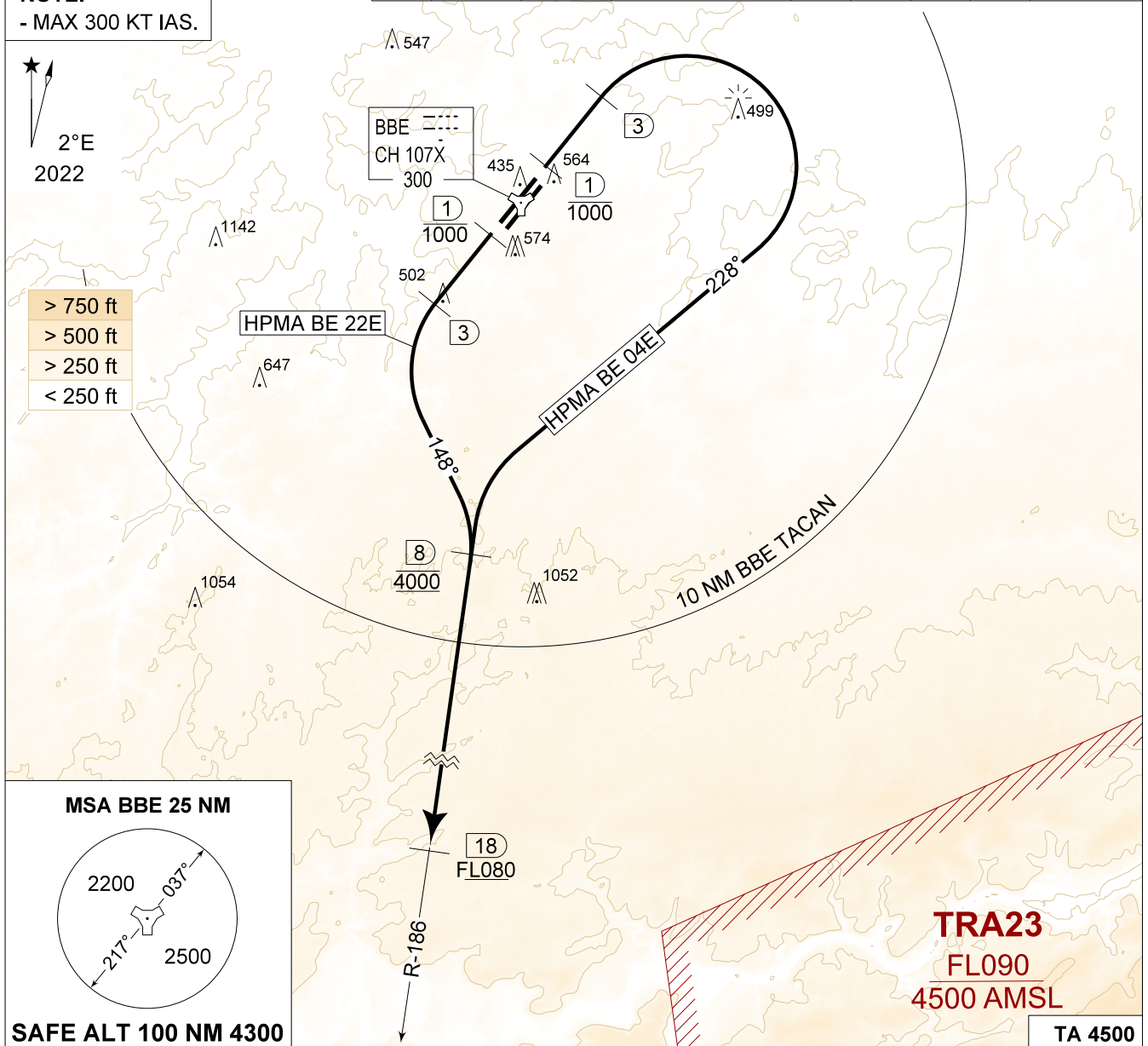
**MIPS**  
**INSTRUMENT DEPARTURE CHART**

AD ELEV 362

**HPMA BE 04E - 22E**  
**BEAUVECHAIN (EBBE)**

BEAUVECHAIN GND 359.825 121.855	BEAUVECHAIN TWR 362.025 130.730	BEAUVECHAIN APP 282.100 122.830	BELGA RADAR 374.400 129.325						
TACAN BBE - CH 107X	RWY <b>04L</b> <b>22R</b>	PDG 8.75% 8.75%	5.00° 5.00°	From-To DER-4000 DER-4000	120 1070	180 1600	240 2130	300 2660	Reason <b>HPMA</b> <b>HPMA</b>

**NOTE:**  
- MAX 300 KT IAS.



<p>HPMA BE 04E (RWY 04L)</p> <p>(31)</p>	<ul style="list-style-type: none"> <li>- Climb on track 037° (MAX 300 KT IAS) and contact EBBE APP.</li> <li>- Pass 1 DME at or below 1000 FT.</li> <li>- At 3 DME turn right on track 228° to intercept R-186 outbound.</li> <li>- Pass 8 DME / R-186 at 4000 FT AMSL.</li> <li>- Contact BELGA RADAR passing 4500 FT AMSL.</li> <li>- Pass 18 DME / R-186 at FL080 or above. Climb as directed.</li> </ul>
<p>HPMA BE 22E (RWY 22R)</p> <p>(19)</p>	<ul style="list-style-type: none"> <li>- Climb on track 217° (MAX 300 KT IAS) and contact EBBE APP.</li> <li>- Pass 1 DME at or below 1000 FT.</li> <li>- At 3 DME turn left on track 148° to intercept R-186 outbound.</li> <li>- Pass 8 DME / R-186 at 4000 FT AMSL.</li> <li>- Contact BELGA RADAR passing 4500 FT AMSL.</li> <li>- Pass 18 DME / R-186 at FL080 or above. Climb as directed.</li> </ul>

**HPMA BE 04E - 22E**

50°45.47' N  
004°46.02' E

**BEAUVECHAIN (EBBE)**