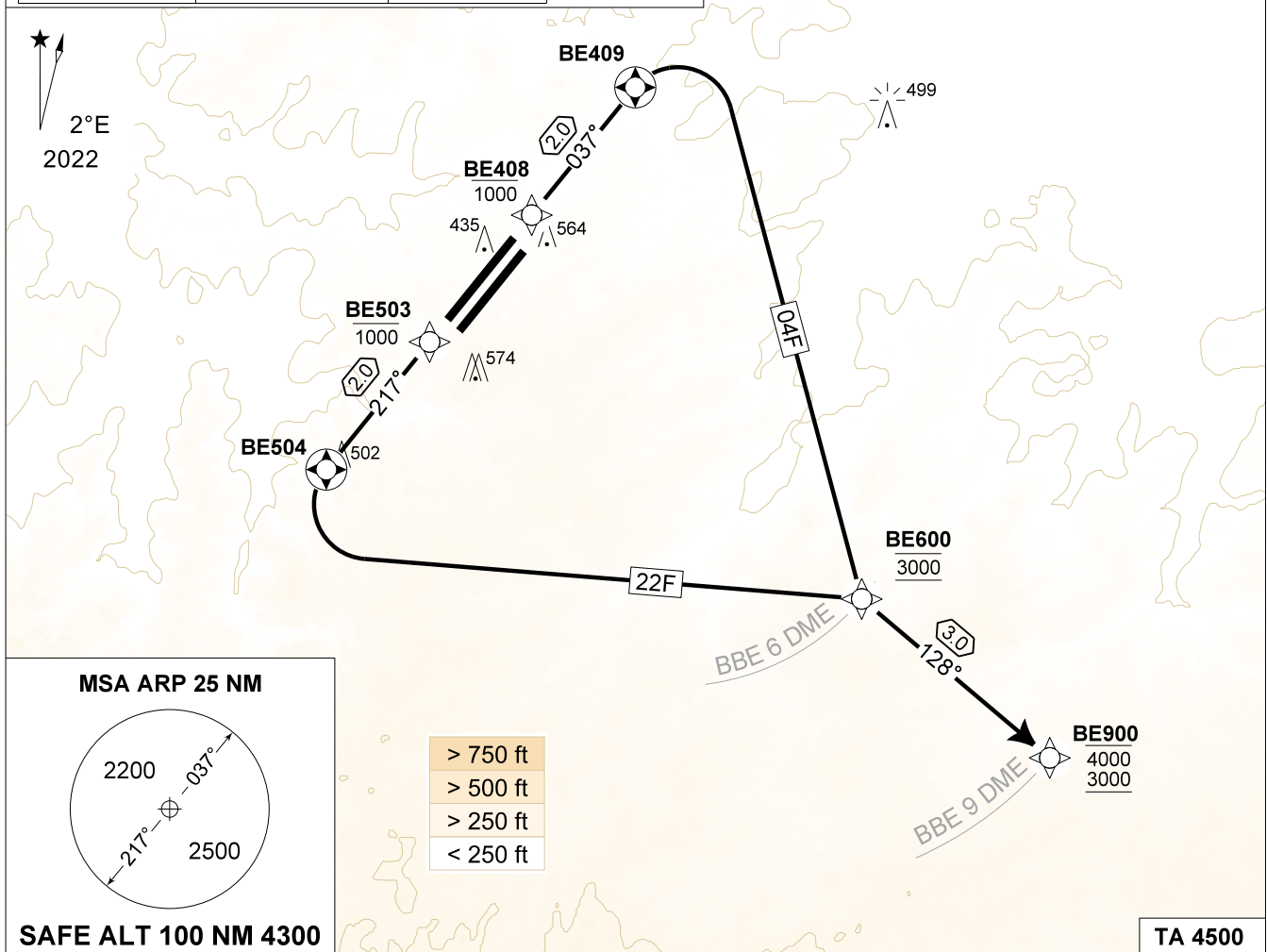


MIPS **BE 04F - 22F (RNAV1)**
BEAUVECHAIN (EBBE)
INSTRUMENT DEPARTURE CHART AD ELEV 362

BEAUVECHAIN GND 359.825 121.855	BEAUVECHAIN TWR 362.025 130.730	BEAUVECHAIN APP 282.100 122.830	BELGA RADAR 374.400 129.325						
TACAN BBE - CH 107X	RWY	PDG	From-To	60	90	120	150	Reason	
	04L	4.1%	2.35°	DER-4000	250	380	500	630	ATC
	22R	4.1%	2.35°	DER-4000	250	380	500	630	ATC

NOTE:
 a) ONLY FOR CAT A and CAT H.
 b) DEPARTURE RWY 04R / 22L NOT AUTHORIZED.
 c) DME INFORMATION AVAILABLE UNDER FREQUENCY MHZ.
 d) CLOSE-IN OBSTACLES NOT CONSIDERED TO DETERMINE THE PDG.

50°46'24.83" N	004°46'57.55" E	415 FT AMSL
50°45'46.78" N	004°46'58.85" E	371 FT AMSL
50°44'25.49" N	004°44'58.64" E	440 FT AMSL



BE 04F RNAV1 overlay (RWY 04L) 13	<ul style="list-style-type: none"> - Climb to MAX 1000 FT inbound BE408 and contact EBBE APP. - At BE408, continue climb inbound BE409. - At BE409, continue climb to 3000 FT and turn right inbound BE600. - At BE600, proceed inbound BE900 and follow ATC instructions.
BE 22F RNAV1 overlay (RWY 22R) 13	<ul style="list-style-type: none"> - Climb to MAX 1000 FT inbound BE503 and contact EBBE APP. - At BE503, continue climb inbound BE504. - At BE504, continue climb to 3000 FT and turn left inbound BE600. - At BE600, proceed inbound BE900 and follow ATC instructions.

BE 04F - 22F (RNAV1) 50°45.47' N
004°46.02' E **BEAUVECHAIN (EBBE)**