

MIPS
INSTRUMENT APPROACH CHART

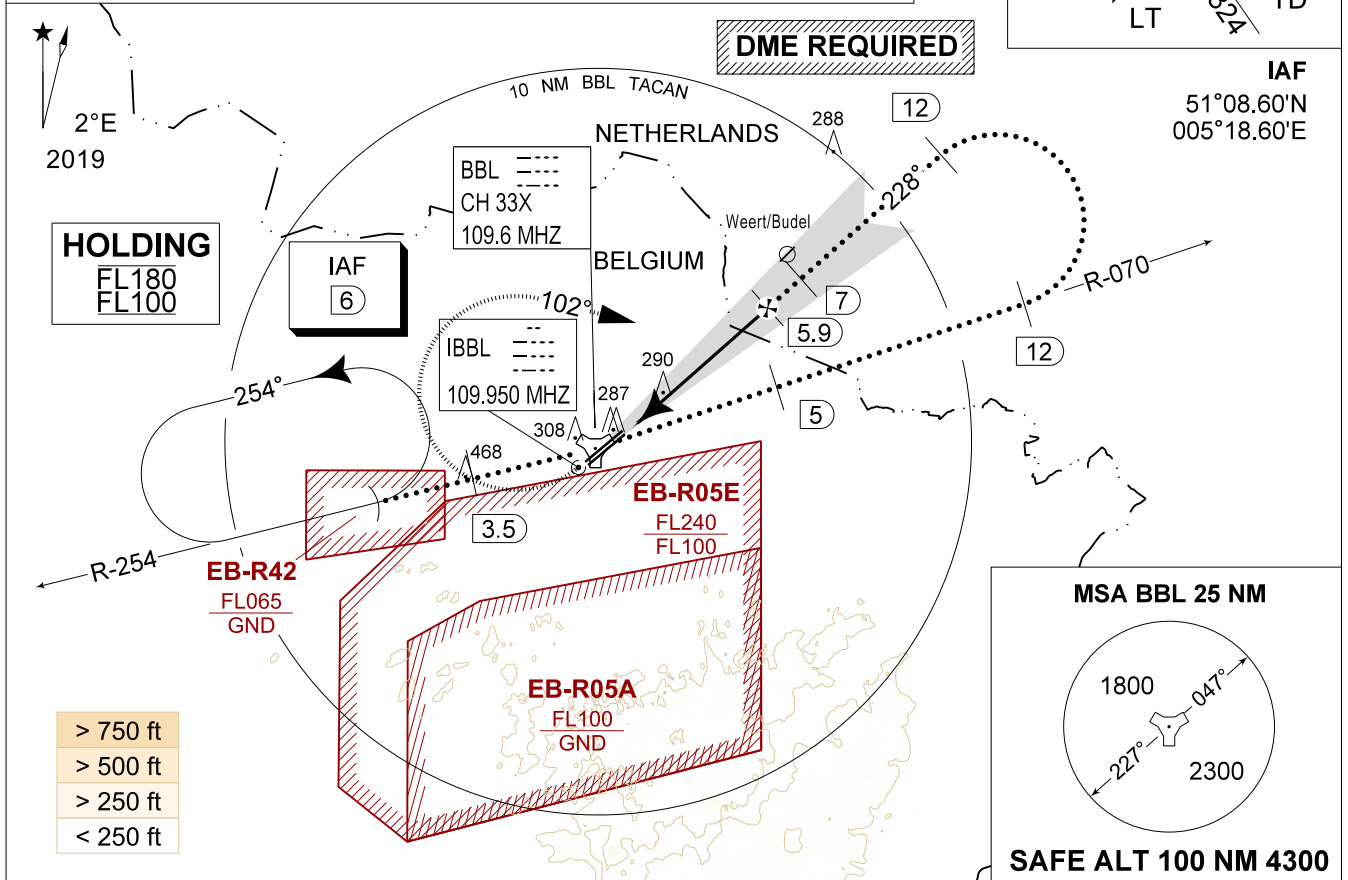
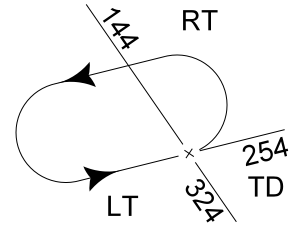
HPMA-ILS RWY 23R
KLEINE-BROGEL (EBBL)

AD ELEV 192

BELGA RADAR 374.400 129.325		KLEINE-BROGEL APP 337.975 134.480		KLEINE-BROGEL TWR 314.375 134.105		KLEINE-BROGEL GND 362.775 122.100	
LOC / DME IBBL 109.950 / 33X	APP COURSE 228°	GS INTCP ALT 1700 FT	GS 2.75°	DA 361	THR 161 FT	ALS 930 m	LDA 8045 FT

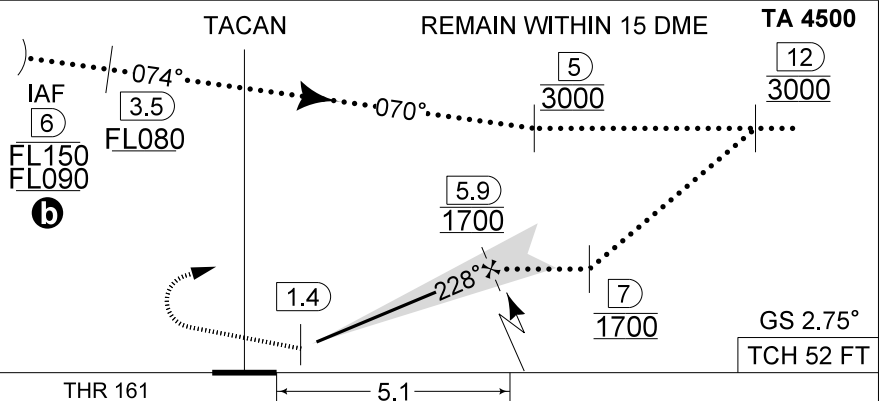
NOTE:
a) DME INFORMATION AVAILABLE UNDER FREQUENCY 109.600 MHz

CAUTION:
a) CLASS E AIRSPACE IN AMSTERDAM FIR.
b) AIRCRAFT PROCEEDING IAF AT FL100 OR ABOVE REQUIRES DECONFLICTION WITH POSSIBLE ACTIVITIES IN EB-R05E.



DME BBL	5	4	3	2
Altitude	1420	1130	840	550
Height	(1259)	(969)	(679)	(389)

MISSED APPROACH
Climb straight ahead to 1000 FT. Passing 1 DME BBL TACAN turn right track 102° at MAX 210 KIAS (MAX 275 KIAS for HPMA) and continue the climb to 3000 FT. Intercept R-070 outbound. If no radio contact, proceed for a ILS RWY 23R at 3000 FT.



CAT I

HPMA	
S-ILS 23R	361 - 0.8 200 (200 - 0.8 / 1.3) GS 2.75°
S-PAR 23R	366 - 0.8 205 (300 - 0.8 / 1.4) GS 2.75°
S-LOC 23R	540 - 1.5 379 (400 - 1.5 / 2.5)

HPMA-ILS RWY 23R

51°10.10' N
005°28.19' E
2-16

KLEINE-BROGEL (EBBL)

CHANGE: LDA updated

MIPS

BEL DEFENCE, AIR COMPONENT 24-MAR-2022 - THS