

MIPS
INSTRUMENT APPROACH CHART

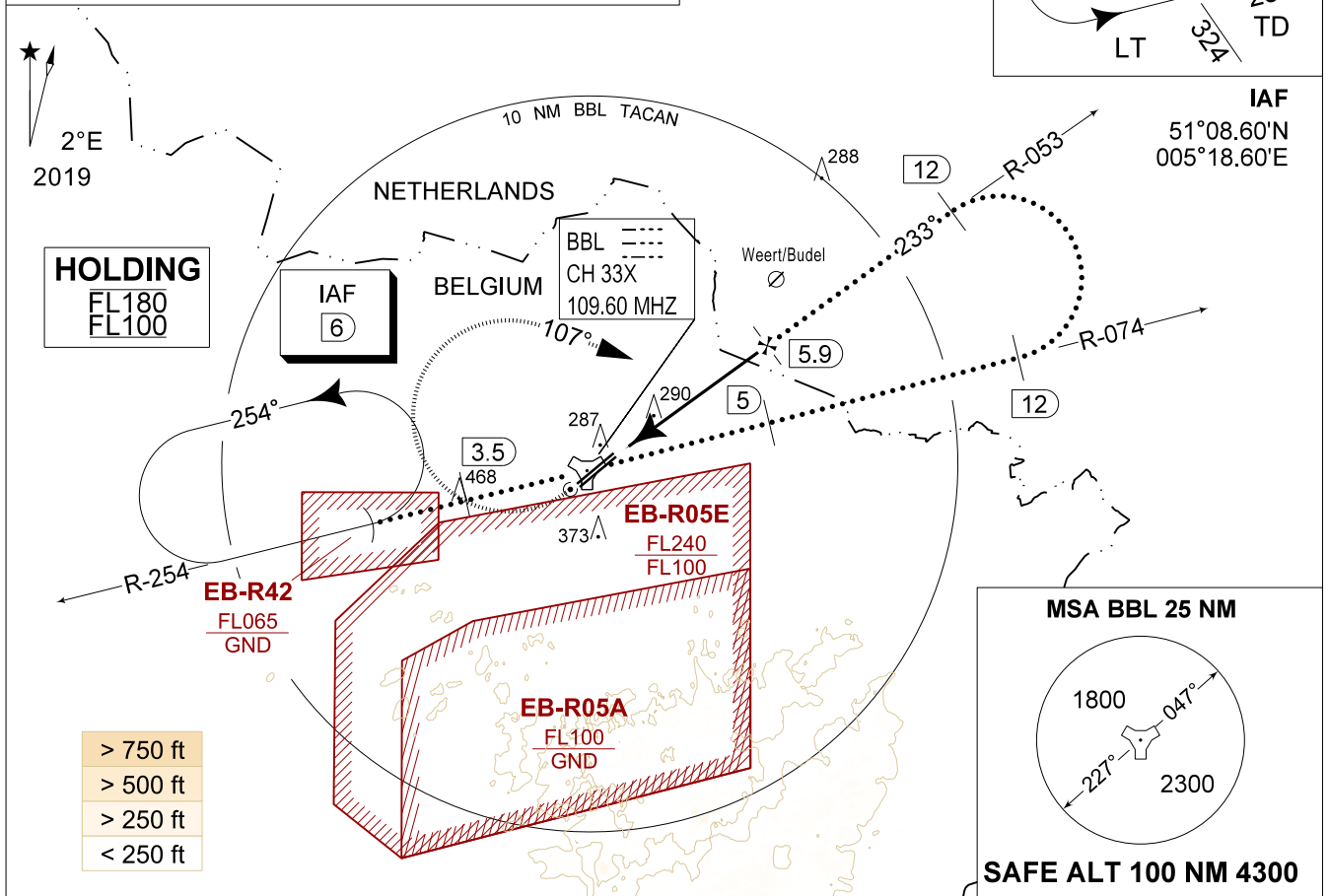
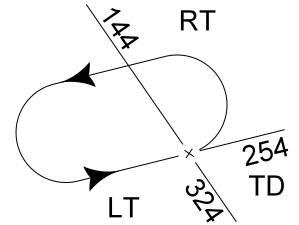
AD ELEV 192

HPMA-TACAN RWY 23R
KLEINE-BROGEL (EBBL)

BELGA RADAR 374.400 129.325		KLEINE-BROGEL APP 337.975 134.480		KLEINE-BROGEL TWR 314.375 134.105		KLEINE-BROGEL GND 362.775 122.100	
TACAN BBL CH 33X	APP COURSE 233°	FAF ALT 1700 FT	DESCENT GR 4.8%(2.75°)	MDA 540	THR 161 FT	ALS 930 M	LDA 8045 FT

CAUTION:

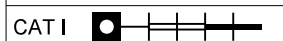
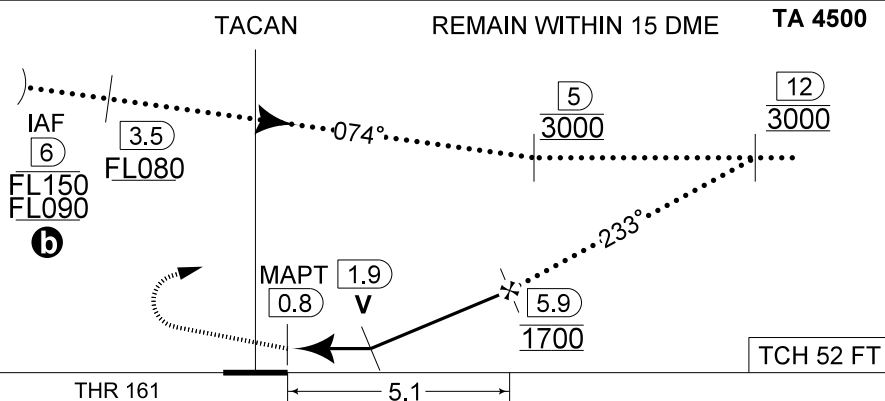
- a) CLASS E AIRSPACE IN AMSTERDAM FIR.
- b** AIRCRAFT PROCEEDING IAF AT FL100 OR ABOVE REQUIRES DECONFLICTION WITH POSSIBLE ACTIVITIES IN EB-R05E.



DME BBL	5	4	3	2
Altitude	1420	1130	840	550
Height	(1259)	(969)	(679)	(389)

MISSED APPROACH

Climb straight ahead to 1000 FT. Passing 1 DME BBL TACAN turn right track 107° at MAX 210 KIAS (MAX 275 KIAS for HPMA) and continue the climb to 3000 FT. Intercept R-074 outbound. If no radio contact, proceed for a TACAN or ILS RWY 23 at 3000 FT.



THR 161	HPMA	TCH 52 FT
CATEGORY	HPMA	
S-TAC 23R	540 - 1.5 379 (400 - 1.5 / 2.5)	
S-PAR 23R	366 - 0.8 205 (300 - 0.8 / 1.4) GS 2.75°	
CIRCLING	770 - 3.2 578 (600 - 3.2)	

HPMA-TACAN RWY 23R

51°10.10' N
005°28.19' E
2-17

KLEINE-BROGEL (EBBL)

CHANGE: LDA and ALS updated

BEL DEFENCE, AIR COMPONENT 24-MAR-2022 - THS