

MIPS
INSTRUMENT APPROACH CHART

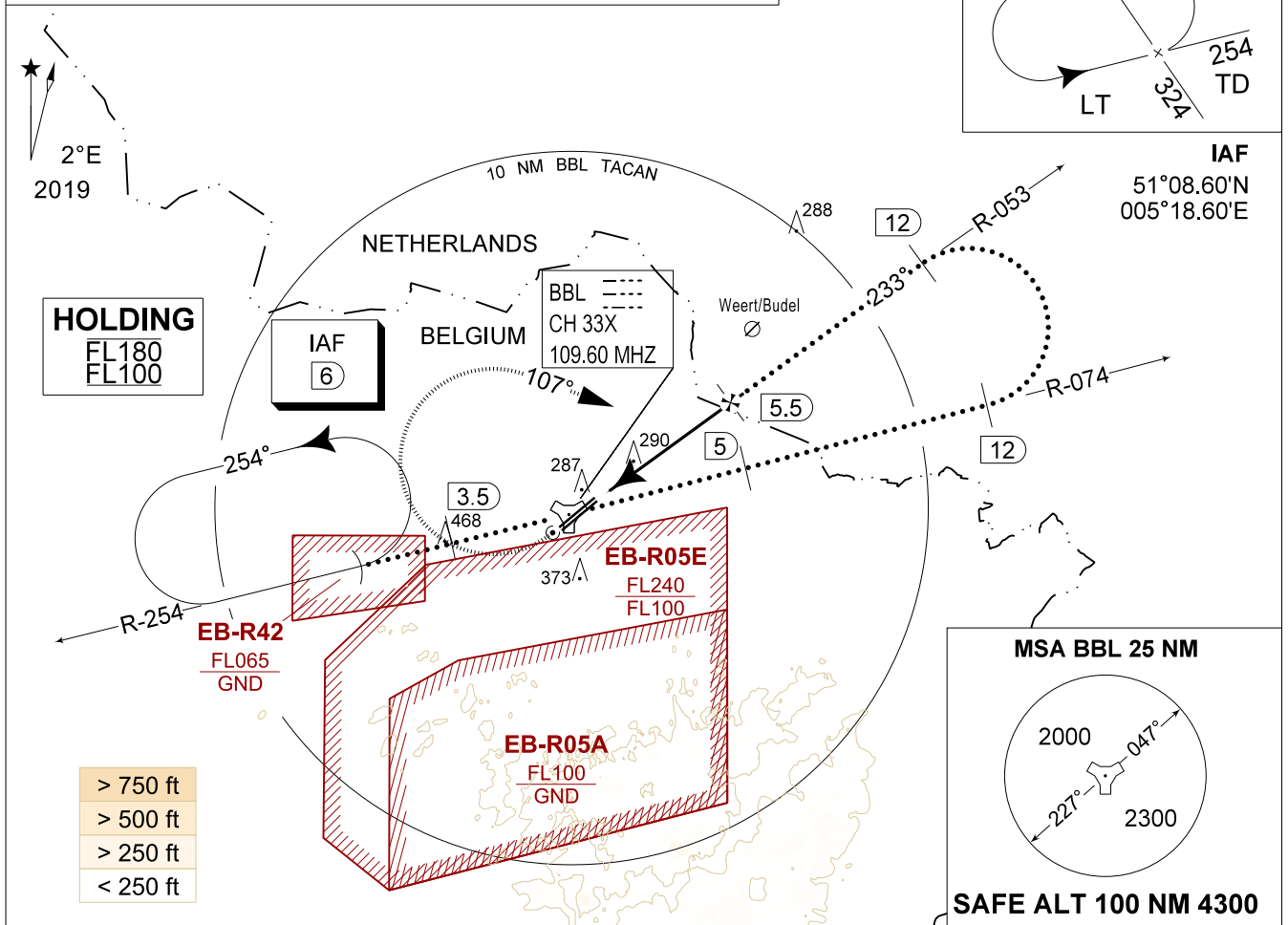
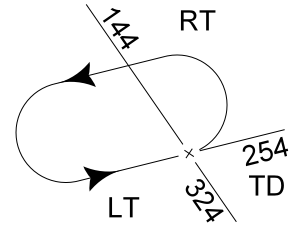
HPMA-TACAN RWY 23R
KLEINE-BROGEL (EBBL)

AD ELEV 192

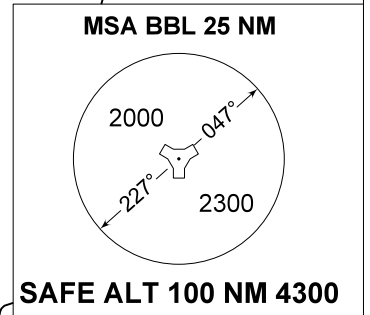
BELGA RADAR 374.400 129.325		KLEINE-BROGEL APP 337.600 134.480		KLEINE-BROGEL TWR 248.075 134.105		KLEINE-BROGEL GND 362.775 122.100	
TACAN BBL CH 33X	APP COURSE 233°	FAF ALT 1700 FT	DESCENT GR 5.24%(3.00°)	MDA 540	THR 161 FT	ALS 930 M	LDA 8045 FT

CAUTION:

- a) CLASS E AIRSPACE IN AMSTERDAM FIR
- b) AIRCRAFT PROCEEDING IAF AT FL100 OR ABOVE REQUIRES DECONFLICTION WITH EB-R05E



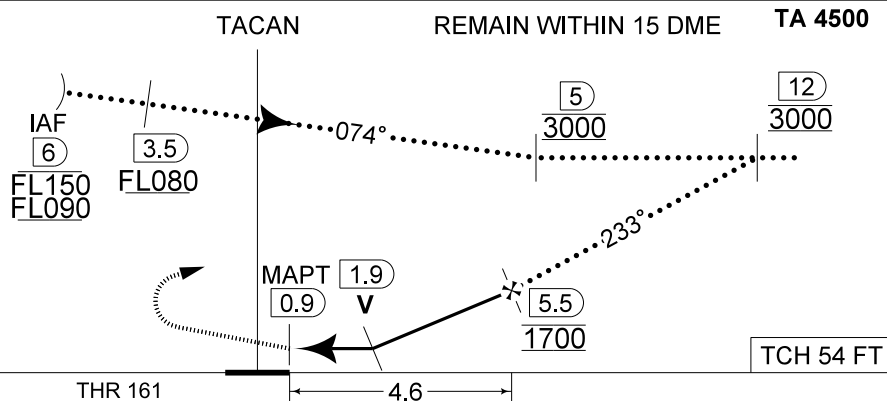
> 750 ft
> 500 ft
> 250 ft
< 250 ft



DME BBL	5	4	3	2
Altitude	1540	1220	900	580
Height	(1379)	(1059)	(739)	(419)

MISSED APPROACH

Climb straight ahead to 1000 FT. Passing 1 DME BBL TACAN turn right track 107° at MAX 275 KIAS and continue the climb to 3000 FT. Intercept R-074 outbound. If no radio contact, proceed for a TACAN or ILS RWY 23R at 3000 FT.



CAT I

THR 161

4.6

TCH 54 FT

CATEGORY	HPMA
S-TAC 23R	540 - 1.0 379 (400 - 1.0 / 1.9)
S-PAR 23R	366 - 0.8 205 (300 - 0.8 / 0.9) GS 3.00°
CIRCLING	770 - 3.2 578 (600 - 3.2)

HPMA-TACAN RWY 23R

51°10.10' N
005°28.19' E

KLEINE-BROGEL (EBBL)

CHANGE: CAUTION

MIPS

BEL DEFENCE, AIR COMPONENT 30-NOV-2023 - THS