

**MIPS**  
**INSTRUMENT APPROACH CHART**

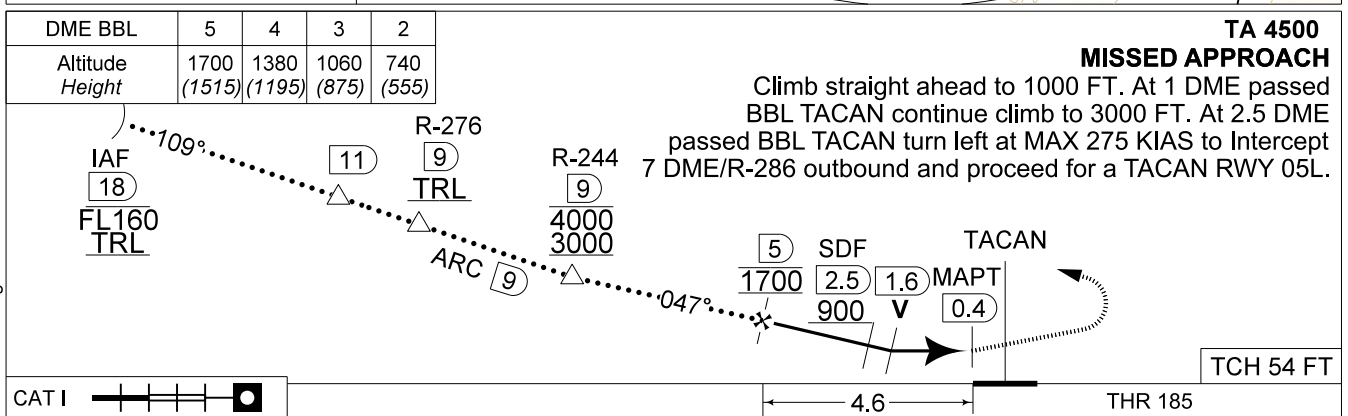
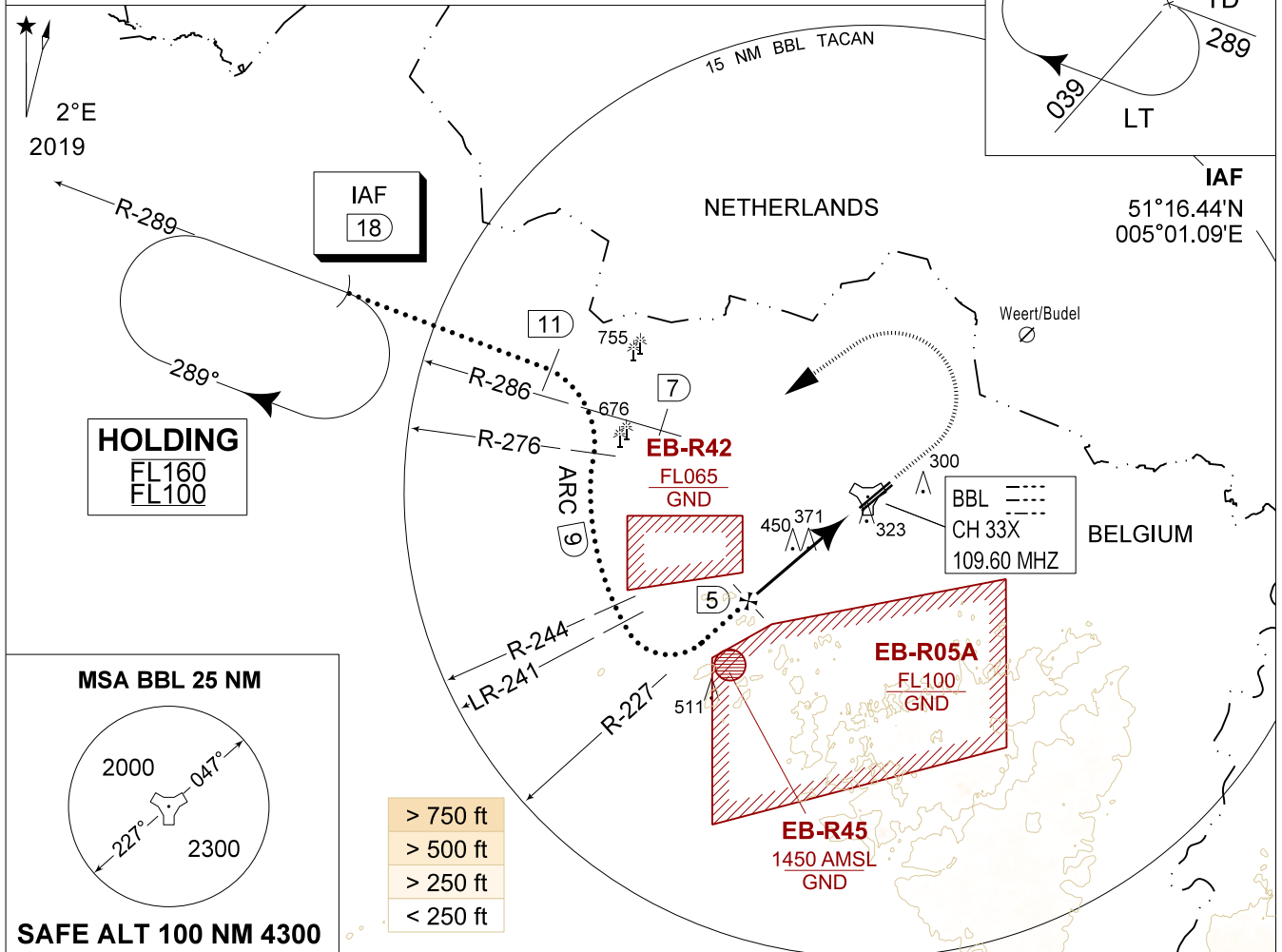
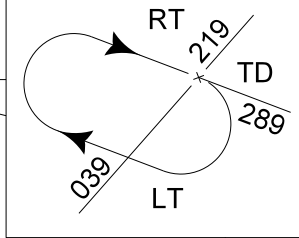
**HPMA-TACAN RWY 05L**  
**KLEINE-BROGEL (EBBL)**

AD ELEV 192

BELGA RADAR 374.400 129.325		KLEINE-BROGEL APP 337.600 134.480		KLEINE-BROGEL TWR 248.075 134.105		KLEINE-BROGEL GND 362.775 122.100	
LOC / DME BBL CH 33X	APP COURSE 047°	FAF ALT 1700 FT	DESCENT GR 5.24%(3.00°)	MDA 620	THR 185	ALS 930 M	LDA 8104 FT

**CAUTION:**

- a) ATC MONITORING REQUIRED TO REMAIN CLEAR OF EB-R42
- b) DECONFLICTION WITH EB-R05A REQUIRED WHEN PAMPA IS ACTIVE



MIPS	CATEGORY	HPMA
	S-TAC 05L	620 - 1.3 435 (500 - 1.3 / 2.3)
	S-PAR 05L	385 - 0.8 200 (200 - 0.8 / 0.9) GS 3.00°
	CIRCLING	770 - 3.2 578 (600 - 3.2)

**HPMA-TACAN RWY 05L** 51°10.10' N 005°28.19' E **KLEINE-BROGEL (EBBL)**