

MIPS
INSTRUMENT APPROACH CHART

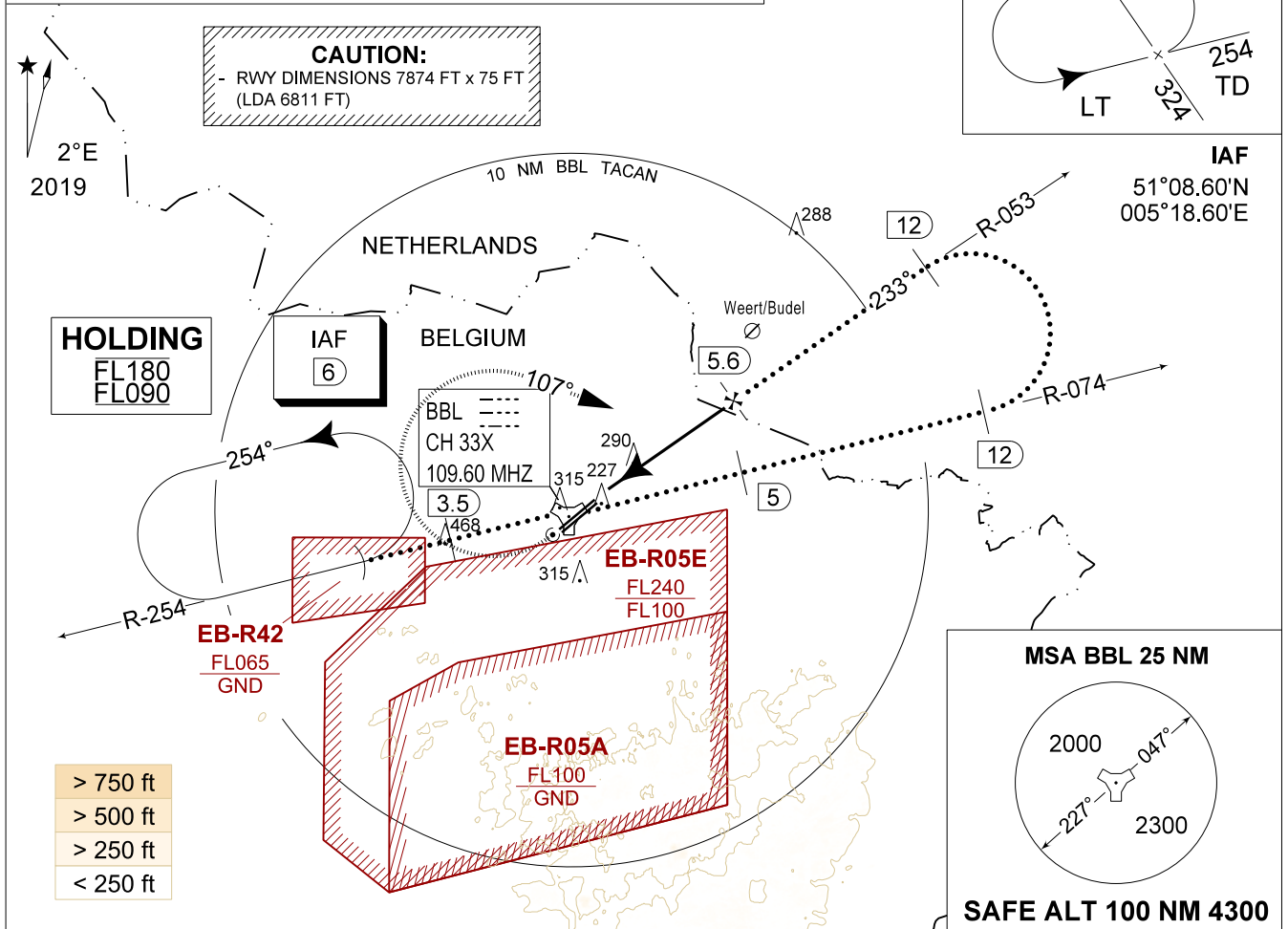
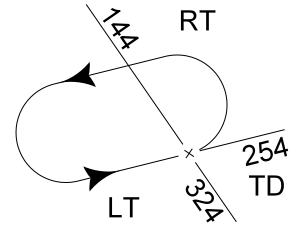
HPMA-TACAN RWY 23L
KLEINE-BROGEL (EBBL)

AD ELEV 192

BELGA RADAR 374.400 129.325		KLEINE-BROGEL APP 337.600 134.480		KLEINE-BROGEL TWR 248.075 134.105		KLEINE-BROGEL GND 362.775 122.100	
TACAN BBL CH 33X	APP COURSE 233°	FAF ALT 1700 FT	DESCENT GR 5.24%(3.00°)	MDA 540	THR 161 FT	ALS -	LDA 6811 FT

CAUTION:

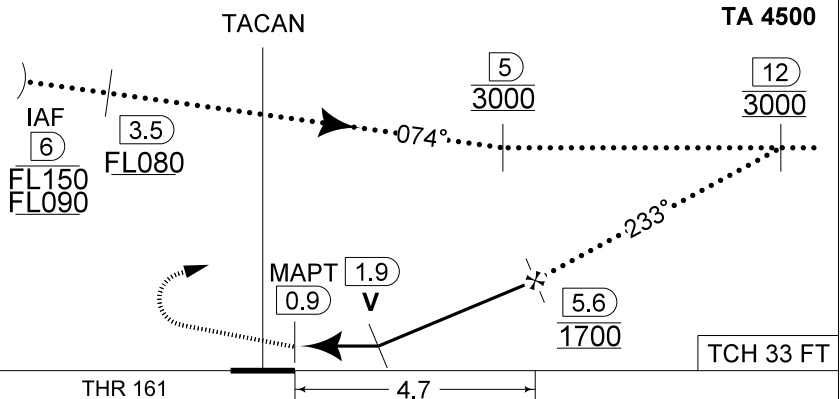
- a) CLASS E AIRSPACE IN AMSTERDAM FIR
- b) AIRCRAFT PROCEEDING IAF AT FL100 OR ABOVE REQUIRES DECONFLICTION WITH EB-R05E



DME BBL	5	4	3	2
Altitude	1520	1200	880	560
Height	(1359)	(1039)	(719)	(399)

MISSED APPROACH

Climb straight ahead to 1000 FT. Passing 1 DME BBL TACAN turn right track 107° at MAX 210 KIAS (MAX 275 KIAS for HPMA) and continue the climb to 3000 FT. Intercept R-074 outbound. If no radio contact, proceed for a TACAN or ILS RWY 23R at 3000 FT.



NO LIGHTS	THR 161	4.7	TCH 33 FT
HPMA			
S-TAC 23L	540 - 2.1 379 (400 - 2.1 / 2.1)		
S-PAR 23L	388 - 1.2 227 (300 - 1.2 / 1.2) GS 3.00°		
CIRCLING	770 - 3.2 578 (600 - 3.2)		

HPMA-TACAN RWY 23L

51°10.10' N
005°28.19' E

KLEINE-BROGEL (EBBL)

CHANGE: Limit of holding

MIPS

BEL DEFENCE, AIR COMPONENT 13-JUN-2024 - THS