

MIPS
INSTRUMENT APPROACH CHART

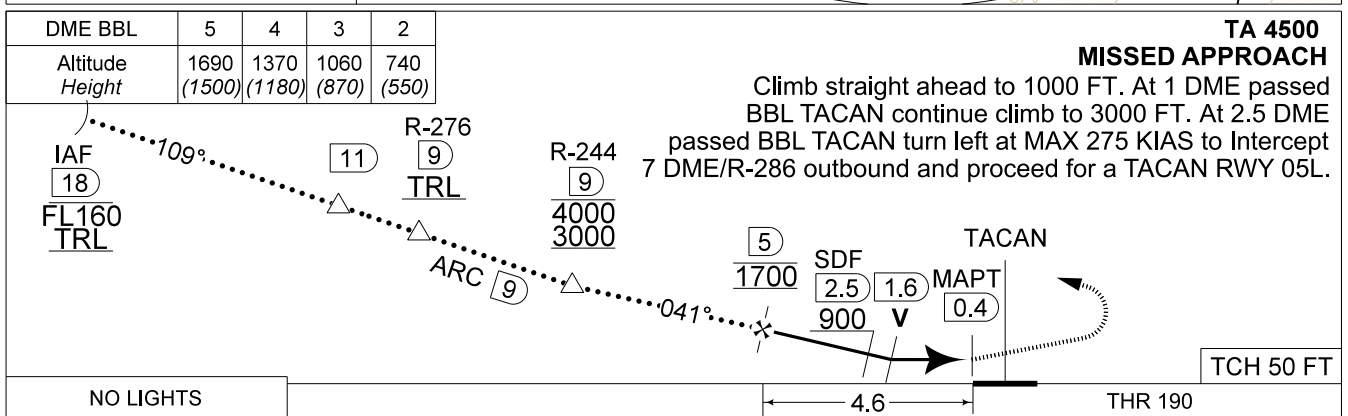
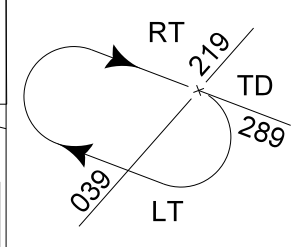
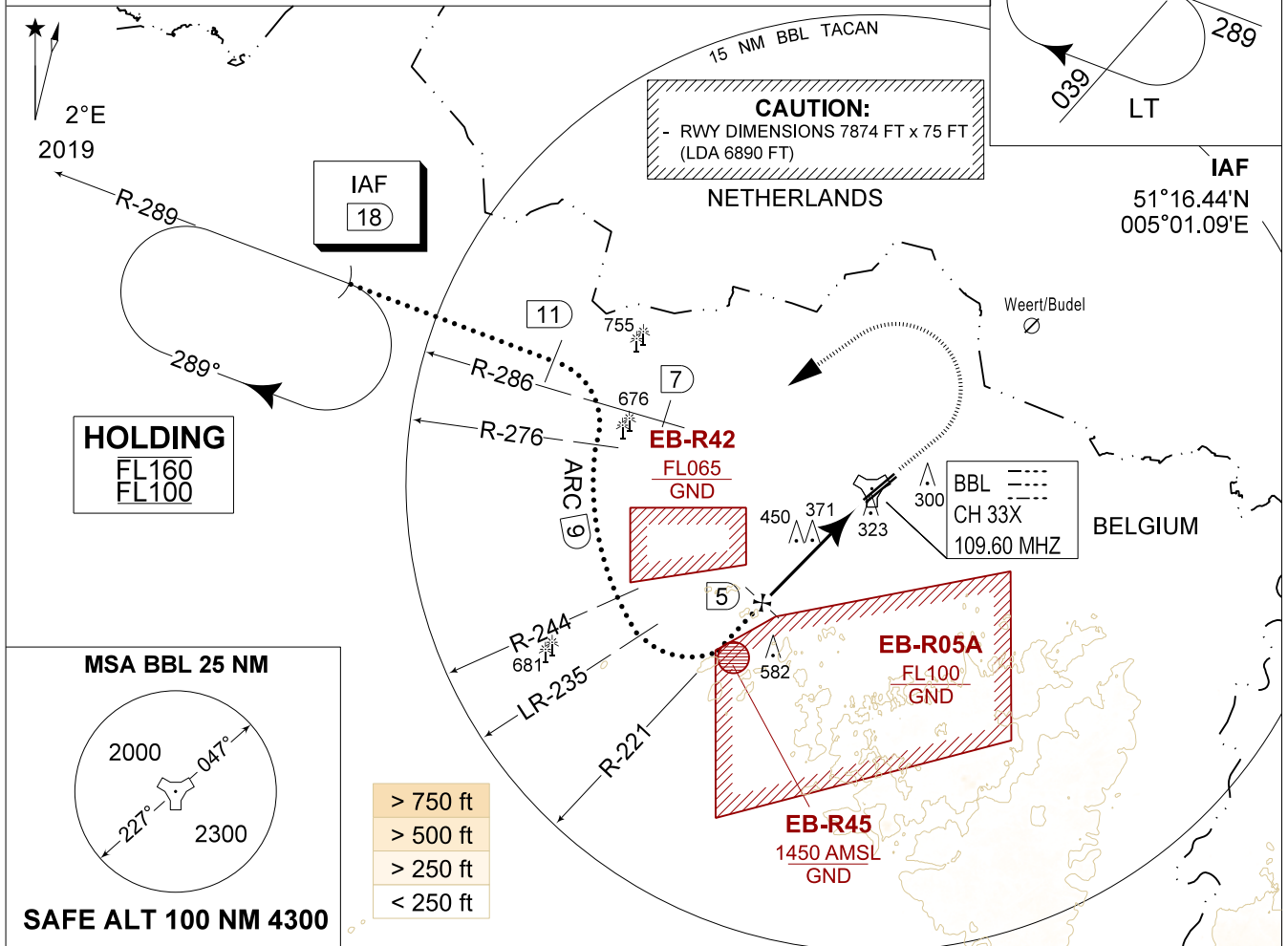
HPMA-TACAN RWY 05R
KLEINE-BROGEL (EBBL)

AD ELEV 192

BELGA RADAR 374.400 129.325		KLEINE-BROGEL APP 337.600 134.480		KLEINE-BROGEL TWR 248.075 134.105		KLEINE-BROGEL GND 362.775 122.100	
LOC / DME BBL CH 33X	APP COURSE 041°	FAF ALT 1700 FT	DESCENT GR 5.24%(3.00°)	MDA 620	THR 190 FT	ALS -	LDA 6890 FT

CAUTION:

- a) ATC MONITORING REQUIRED TO REMAIN CLEAR OF EB-R42
- b) DECONFLICTION WITH EB-R05A REQUIRED WHEN PAMPA IS ACTIVE



NO LIGHTS	HPMA
HPMA-TACAN RWY 05R	620 - 2.3 430 (500 - 2.3 / 2.3)
S-TAC 05R	399 - 1.0 209 (300 - 1.0 / 1.0) GS 3.00°
S-PAR 05R	770 - 3.2 578 (600 - 3.2)
CIRCLING	

HPMA-TACAN RWY 05R 51°10.10' N 005°28.19' E **KLEINE-BROGEL (EBBL)**

CHANGE: Limit of holding

MIPS

BEL DEFENCE, AIR COMPONENT 13-JUN-2024 - THS