

MIPS
INSTRUMENT APPROACH CHART

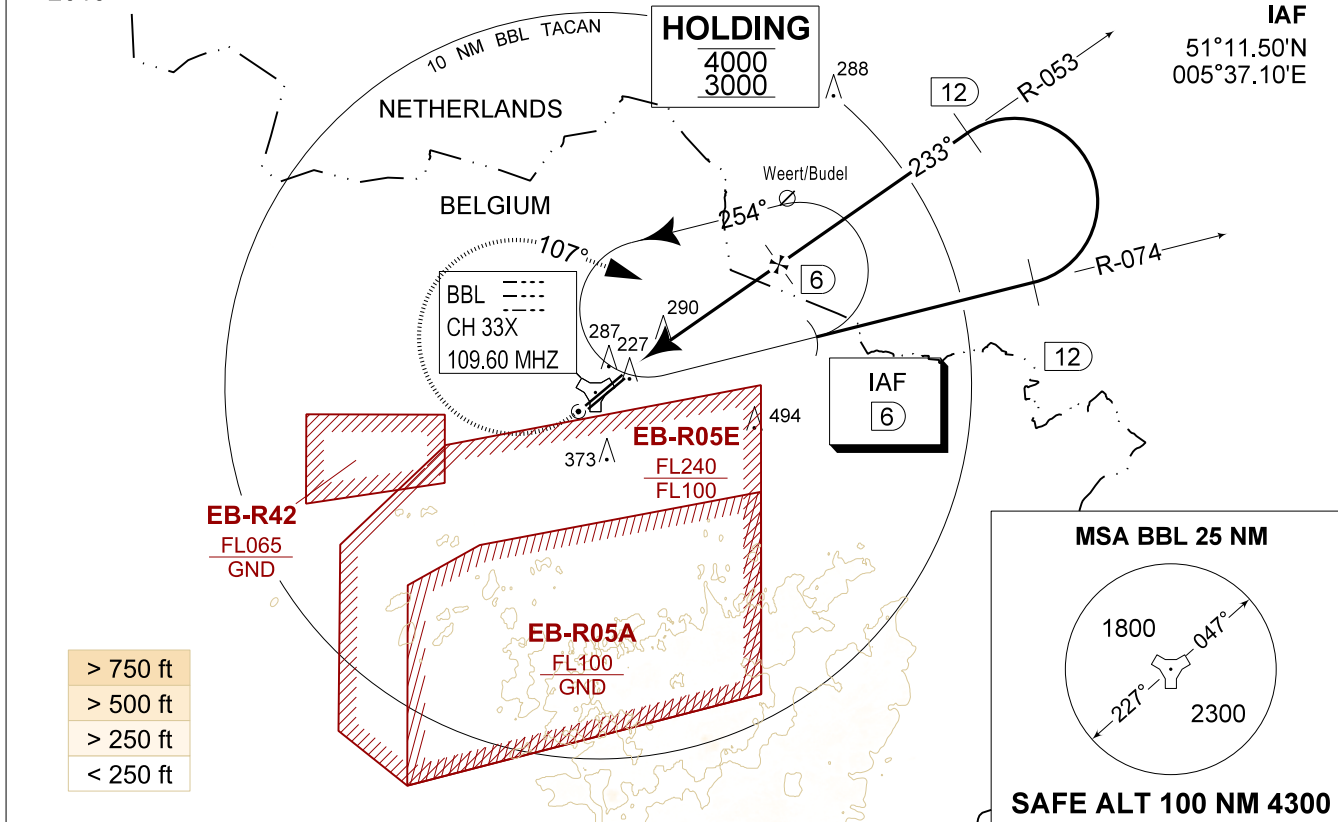
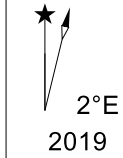
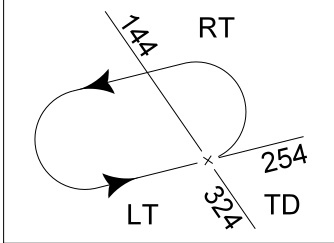
AD ELEV 192

TACAN RWY 23L
KLEINE-BROGEL (EBBL)

BELGA RADAR 374.400 129.325		KLEINE-BROGEL APP 337.975 134.480		KLEINE-BROGEL TWR 314.375 134.105		KLEINE-BROGEL GND 362.775 122.100	
TACAN BBL CH 33X	APP COURSE 233°	FAF ALT 1700 FT	DESCENT GR 4.80%(2.75°)	MDA 540	THR 161 FT	ALS -	LDA 6811 FT

CAUTION:
a) CLASS E AIRSPACE IN AMSTERDAM FIR.

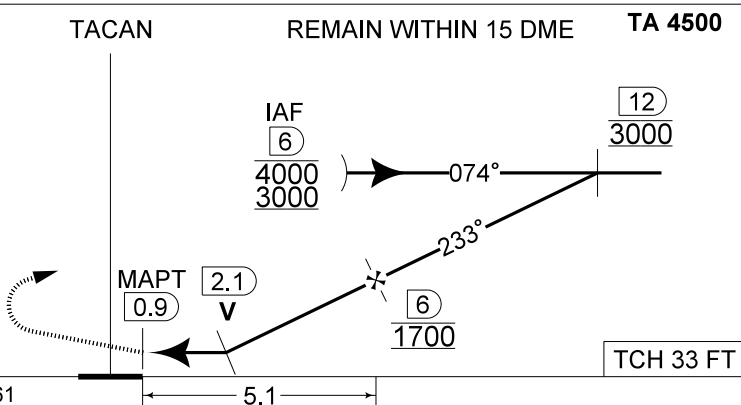
CAUTION:
- RWY DIMENSIONS 7874 FT x 75 FT
(LDA 6794 FT).



> 750 ft
> 500 ft
> 250 ft
< 250 ft

DME BBL	5	4	3
Altitude	1400	1110	820
Height	(1239)	(949)	(659)

MISSED APPROACH
Climb straight ahead to 1000 FT. Passing 1 DME BBL TACAN turn right track 107° at MAX 210 KIAS (MAX 275 KIAS for HPMA) and continue the climb to 3000 FT. Intercept R-074 outbound. If no radio contact, proceed for a TACAN RWY 23R at 3000 FT.



NO LIGHTS	THR 161	5.1	TCH 33 FT
CATEGORY	A		HPMA
S-TAC 23L	540 - 2.5 379 (400 - 2.5 / 2.5)		540 - 2.5 379 (400 - 2.5 / 2.5)
S-PAR 23L	N/A		388 - 1.4 227 (300 - 1.4 / 1.4) GS 3.00°
CIRCLING	700 - 1.5 508 (600 - 1.5)		770 - 3.2 578 (600 - 3.2)

TACAN RWY 23L 51°10.10' N 005°28.19' E **KLEINE-BROGEL (EBBL)**
2-24

CHANGE: Minima S-TAC 23L and LDA updated

BEL DEFENCE, AIR COMPONENT 24-MAR-2022 - THS