

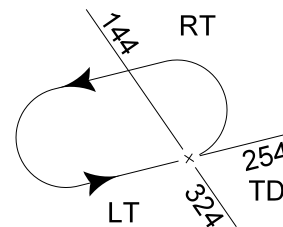
**MIPS**  
**INSTRUMENT APPROACH CHART**

**TACAN RWY 23R**  
**KLEINE-BROGEL (EBBL)**

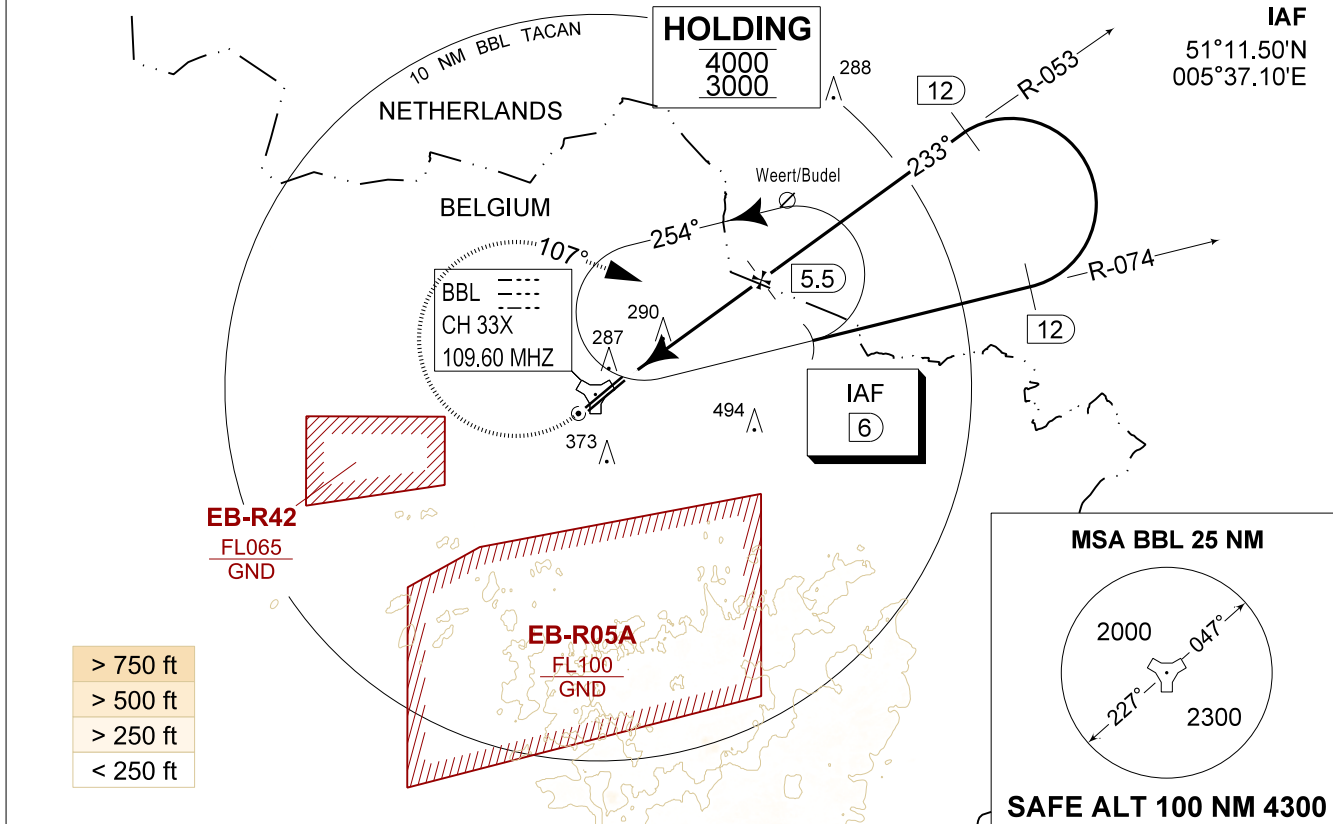
AD ELEV 192

BELGA RADAR 374.400 129.325		KLEINE-BROGEL APP 337.600 134.480		KLEINE-BROGEL TWR 248.075 134.105		KLEINE-BROGEL GND 362.775 122.100	
TACAN BBL CH 33X	APP COURSE 233°	FAF ALT 1700 FT	DESCENT GR 5.24%(3.00°)	MDA <b>540</b>	THR 161 FT	ALS 930 M	LDA 8045 FT

**CAUTION:**  
a) CLASS E AIRSPACE IN AMSTERDAM FIR.



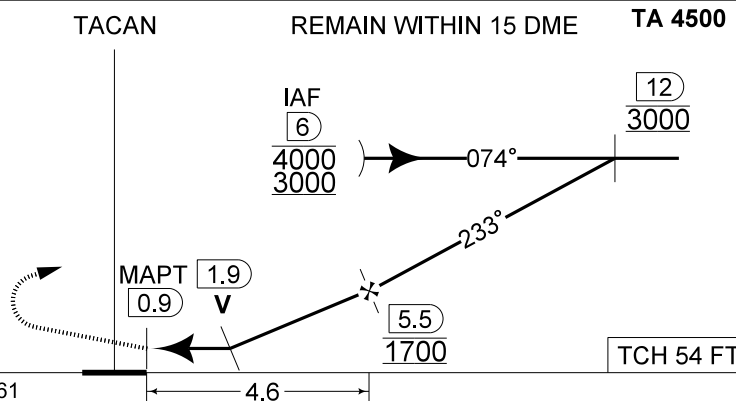
2°E  
2019



> 750 ft
> 500 ft
> 250 ft
< 250 ft

DME BBL	5	4	3	2
Altitude	1540	1220	900	580
Height	(1379)	(1059)	(739)	(419)

**MISSED APPROACH**  
Climb straight ahead to 1000 FT. Passing 1 DME BBL TACAN turn right track 107° at MAX 210 KIAS (MAX 275 KIAS for HPMA) and continue the climb to 3000 FT. Intercept R-074 outbound. If no radio contact, proceed for a TACAN RWY 23R at 3000 FT.



CAT I

THR 161

CATEGORY	A - B	C - D	HPMA
S-TAC 23R	<b>540</b> - 1.0 379 (400 - 1.0 / 1.9)		
S-PAR 23R	<b>429</b> - 0.8 268 (300 - 0.8 / 1.3) GS 3.00°	<b>366</b> - 0.8 205 (300 - 0.8 / 0.9) GS 3.00°	
CIRCLING	<b>900</b> - 3.6 708 (800 - 3.6)	<b>770</b> - 3.2 578 (600 - 3.2)	

**TACAN RWY 23R**

51°10.10' N  
005°28.19' E

**KLEINE-BROGEL (EBBL)**

CHANGE: MSA