

**MIPS**  
**INSTRUMENT APPROACH CHART**

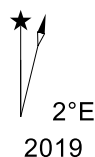
**TACAN RWY 05R**  
**KLEINE-BROGEL (EBBL)**

AD ELEV 192

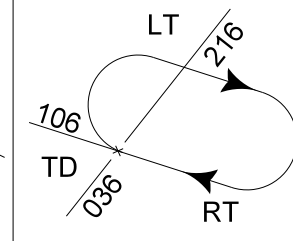
|                                |                    |                                      |                             |                                      |               |                                      |                |
|--------------------------------|--------------------|--------------------------------------|-----------------------------|--------------------------------------|---------------|--------------------------------------|----------------|
| BELGA RADAR<br>374.400 129.325 |                    | KLEINE-BROGEL APP<br>337.975 134.480 |                             | KLEINE-BROGEL TWR<br>314.375 134.105 |               | KLEINE-BROGEL GND<br>362.775 122.100 |                |
| LOC / DME<br>BBL CH 33X        | APP COURSE<br>041° | FAF ALT<br>1700 FT                   | DESCENT GR<br>4.80% (2.75°) | MDA<br><b>620</b>                    | THR<br>190 FT | ALS<br>-                             | LDA<br>6890 FT |

**NOTE:**

a) WHEN EBR05A IS ACTIVE, ATC COORDINATION WITH PAMPA IS REQUIRED



**CAUTION:**  
- RWY DIMENSIONS 7874 FT x 75 FT  
(LDA 6890 FT).

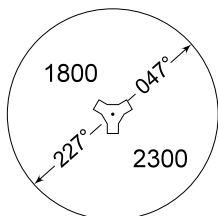


**IAF**  
51°11.90'N  
005°18.77'E

- > 750 ft
- > 500 ft
- > 250 ft
- < 250 ft

**EB-R42**  
FL065  
GND

**MSA BBL 25 NM**



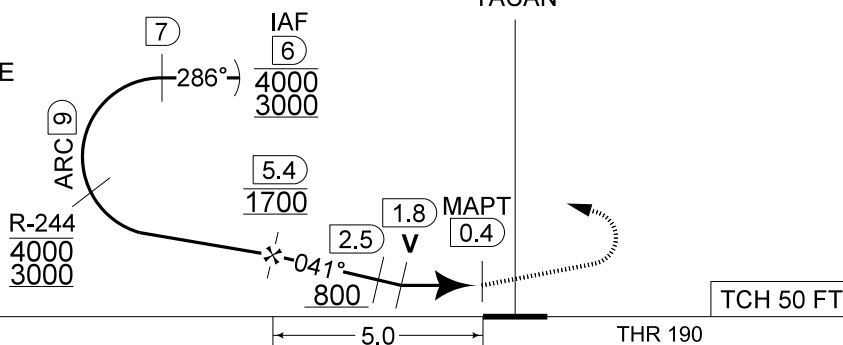
**SAFE ALT 100 NM 4300**

|          |        |        |       |       |
|----------|--------|--------|-------|-------|
| DME BBL  | 5      | 4      | 3     | 2     |
| Altitude | 1570   | 1280   | 990   | 700   |
| Height   | (1380) | (1090) | (800) | (510) |

**TA 4500**

**MISSED APPROACH**

Climb straight ahead to 1000 FT. At 1 DME passed BBL TACAN continue climb to 3000 FT. At 2.5 DME passed BBL TACAN turn left track 233° at MAX 210 KIAS (MAX 275 KIAS for HPMA) to Intercept R-286 outbound and proceed for a TACAN RWY 05L.



NO LIGHTS

5.0 THR 190 TCH 50 FT

|             |           |  |  |   |  |
|-------------|-----------|--|--|---|--|
| <b>MIPS</b> | CATEGORY  | A                                      |  | HPMA  |  |
|             | S-TAC 05R | <b>620</b> - 2.8 430 (500 - 2.8 / 2.8) |  | <b>620</b> - 2.8 430 (500 - 2.8 / 2.8)          |  |
|             | S-PAR 05R | <b>N/A</b>                             |  | <b>399</b> - 1.3 209 (300 - 1.3 / 1.3) GS 3.00° |  |
|             | CIRCLING  | <b>700</b> - 1.5 508 (600 - 1.5)       |  | <b>770</b> - 3.2 578 (600 - 3.2)                |  |

**TACAN RWY 05R**

51°10.10' N  
005°28.19' E  
2-25

**KLEINE-BROGEL (EBBL)**

CHANGE: Minima S-TAC 05R and circling CAT A updated

BEL DEFENCE, AIR COMPONENT 24-MAR-2022 - THS