

**MIPS**  
**INSTRUMENT APPROACH CHART**

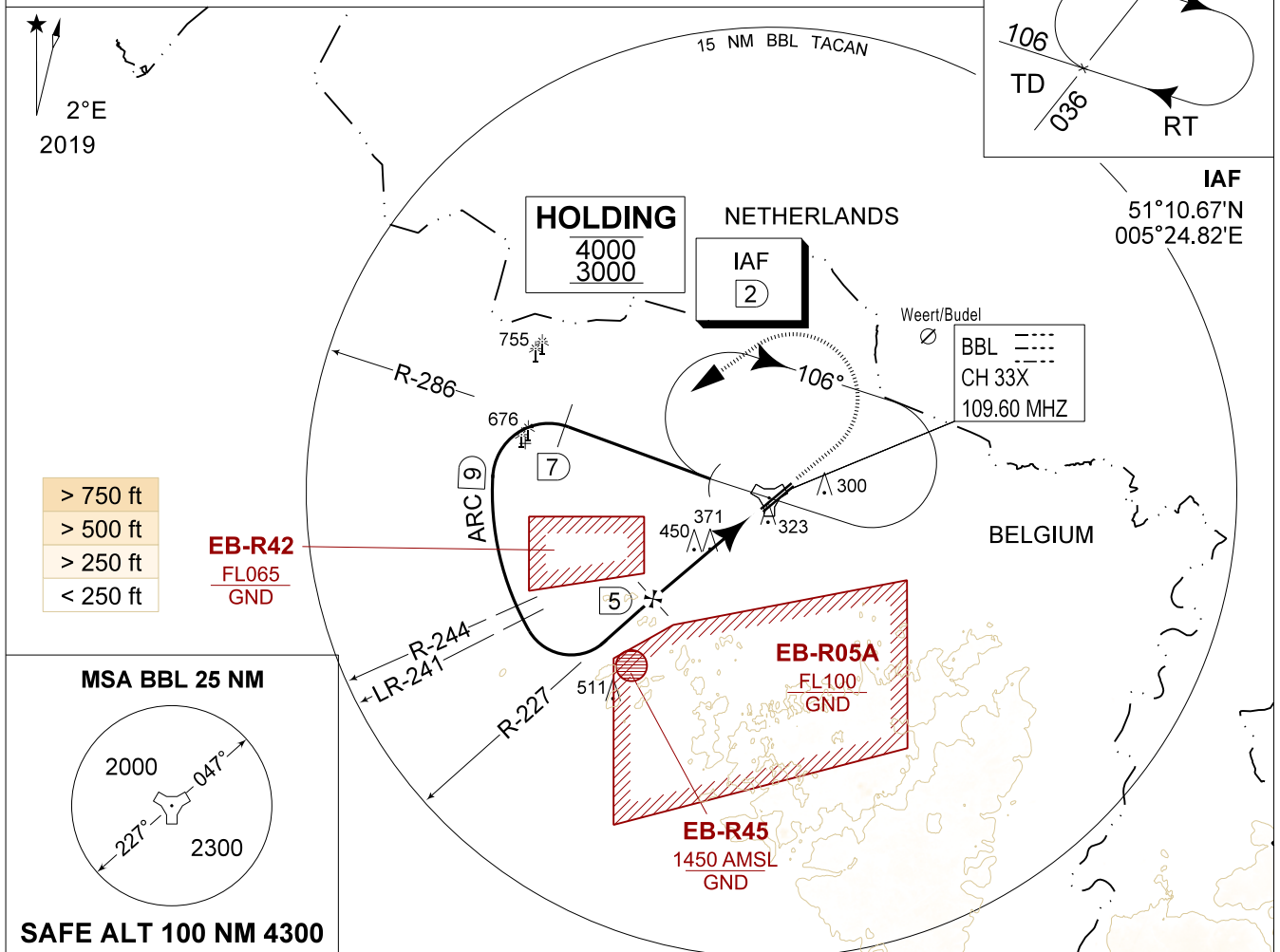
**TACAN RWY 05L**  
**KLEINE-BROGEL (EBBL)**

AD ELEV 192

BELGA RADAR 374.400 129.325		KLEINE-BROGEL APP 337.600 134.480		KLEINE-BROGEL TWR 248.075 134.105		KLEINE-BROGEL GND 362.775 122.100	
LOC / DME BBL CH 33X	APP COURSE 047°	FAF ALT 1700 FT	DESCENT GR 5.24% (3.00°)	MDA 620	THR 185 FT	ALS 930 M	LDA 8104 FT

**CAUTION:**

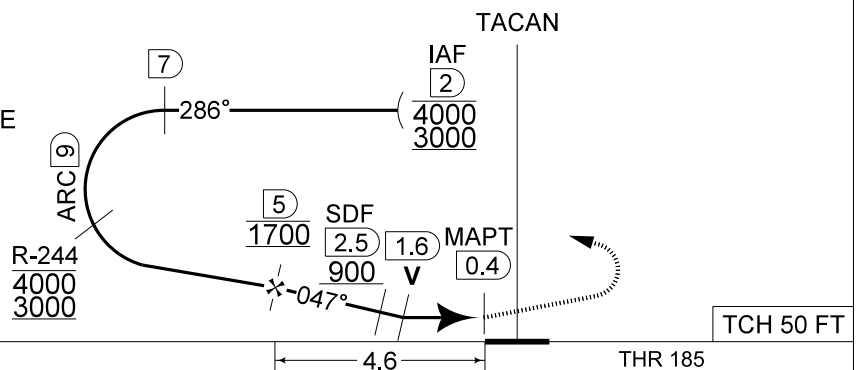
- a) ATC MONITORING REQUIRED TO REMAIN CLEAR OF EB-R42
- b) DECONFLICTION WITH EB-R05A REQUIRED WHEN PAMPA IS ACTIVE



DME BBL	5	4	3	2
Altitude	1700	1380	1060	740
Height	(1515)	(1195)	(875)	(555)

**MISSED APPROACH**

Climb straight ahead to 1000 FT. At 1 DME passed BBL TACAN continue climb to 3000 FT. At 2.5 DME passed BBL TACAN turn left at MAX 210 KIAS (MAX 275 KIAS for HPMA) to Intercept 7 DME/R-286 outbound and proceed for a TACAN RWY 05L.



CAT I

CATEGORY	A - B	C - D	HPMA
S-TAC 05L	<b>620</b> - 1.3 435 (500 - 1.3 / 2.3)		
S-PAR 05L	<b>442</b> - 0.8 257 (300 - 0.8 / 1.2) GS 3.00°		<b>385</b> - 0.8 200 (200 - 0.8 / 0.9) GS 3.00°
CIRCLING	<b>720</b> - 1.6 528 (600 - 1.6)	<b>900</b> - 3.6 708 (800 - 3.6)	<b>770</b> - 3.2 578 (600 - 3.2)

**TACAN RWY 05L**

51°10.10' N  
005°28.19' E

**KLEINE-BROGEL (EBBL)**

CHANGE: CAUTION b)