

MIPS
INSTRUMENT APPROACH CHART

QRA HPMA-TACAN RWY 05L
KLEINE-BROGEL (EBBL)

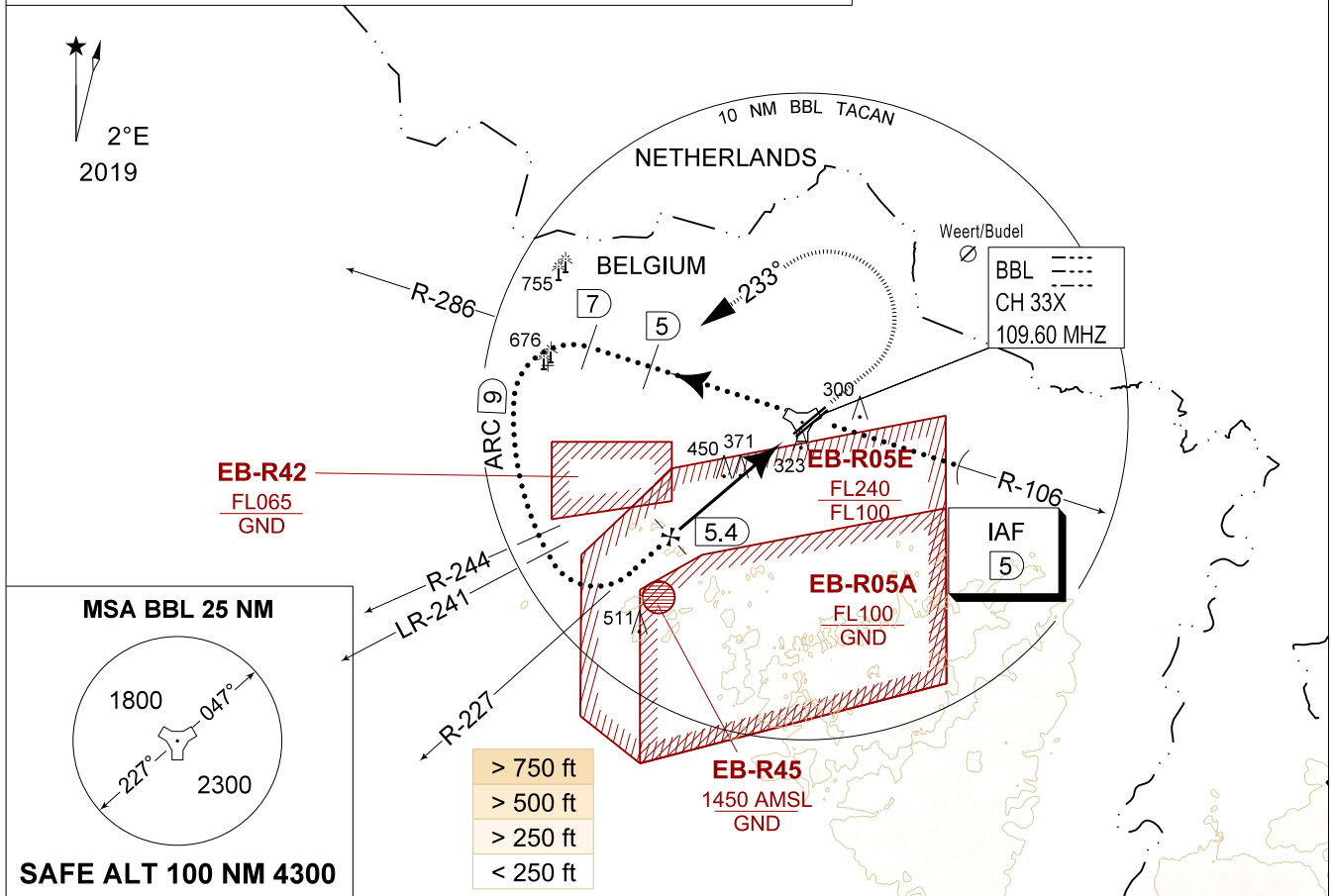
AD ELEV 192

BELGA RADAR 374.400 129.325		KLEINE-BROGEL APP 337.975 134.480		KLEINE-BROGEL TWR 314.375 134.105		KLEINE-BROGEL GND 362.775 122.100	
LOC / DME BBL CH 33X	APP COURSE 047°	FAF ALT 1700 FT	DESCENT GR 4.80% (2.75°)	MDA 620	THR 185 FT	ALS 930 M	LDA 8104 FT

WARNING:

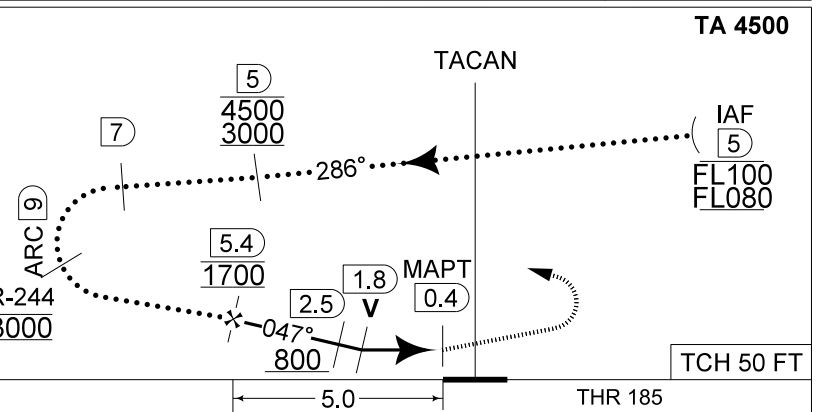
- a) ONLY TO BE USED FOR QRA RECOVERY OUTSIDE MIL FLYING HOURS OR FOR TRAINING PURPOSES OF HOMEBASE AIRCRAFT AFTER COORDINATION WITH ATC PRIOR TO THE FLIGHT.
- b) WHEN PAMPA IS ACTIVATED EBBL ATC MUST ORDER PAMPA TO SUSPEND ACTIVITIES.

IAF
51°08.50'N
005°35.40'E



DME BBL	5	4	3	2
Altitude	1570	1280	990	690
Height	(1385)	(1095)	(805)	(505)

MISSED APPROACH
Climb straight ahead to 1000 FT. At 1 DME passed BBL TACAN continue climb to 3000 FT. At 2.5 DME passed BBL TACAN turn left track 233° at MAX 275 KIAS to Intercept R-286 outbound and proceed for a TACAN RWY 05L.



CATEGORY	HPMA
S-TAC 05L	620 - 1.9 435 (500 - 1.9 / 2.8)
S-PAR 05L	385 - 0.8 200 (200 - 0.8 / 1.3) GS 2.75°
CIRCLING	770 - 3.2 578 (600 - 3.2)

QRA HPMA-TACAN RWY 05L 51°10.10'N
005°28.19'E
2-27 **KLEINE-BROGEL (EBBL)**

CHANGE: LDA updated

BEL DEFENCE, AIR COMPONENT 24-MAR-2022 - THS