

**MIPS**  
**INSTRUMENT APPROACH CHART**

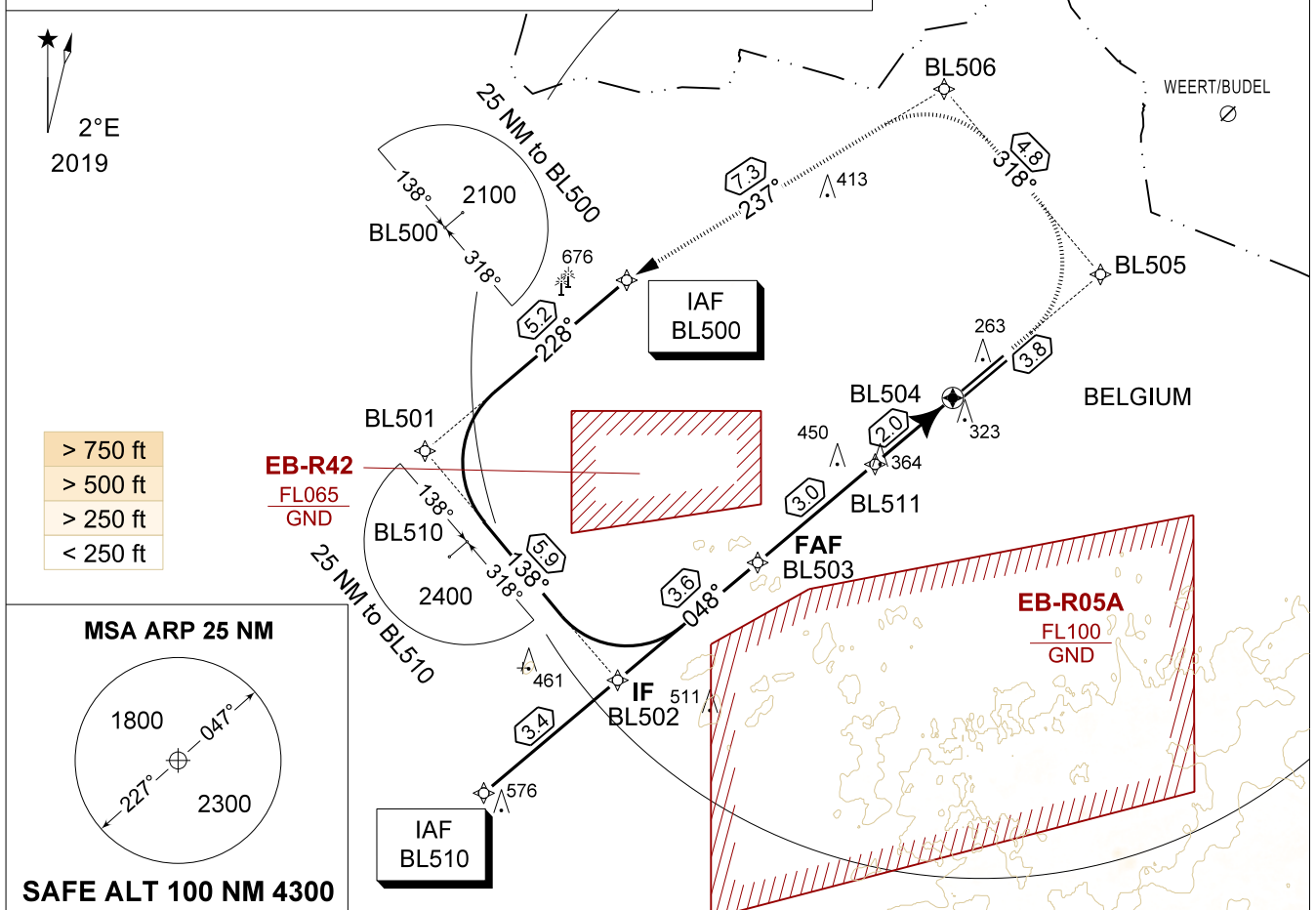
AD ELEV 192

**RNP RWY 05L (LNAV)**  
**KLEINE-BROGEL (EBBL)**

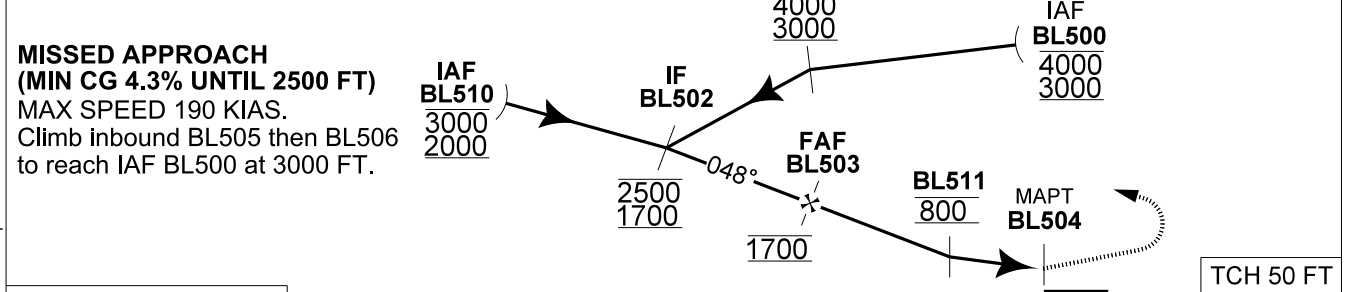
BELGA RADAR 374.400 129.325		KLEINE-BROGEL APP 337.975 134.480		KLEINE-BROGEL TWR 314.375 134.105		KLEINE-BROGEL GND 362.775 122.100	
-	APP COURSE 048°	FAF ALT 1700 FT	DESCENT GR 4.80% (2.75°)	MDA <b>620</b>	THR 185 FT	ALS 930 M	LDA 8104 FT

**WARNING:**

a) ABILITY TO FLY MISSED APPROACH AT A CLIMB GRADIENT OF 4.3% UNTIL PASSING 2500 FT IS REQUIRED TO REMAIN IN CONTROLLED AIRSPACE. A CLIMB GRADIENT OF 2.5% GUARANTEES REQUIRED OBSTACLE CLEARANCE.



THR 05L	4	3	2	<b>TA 4500</b>
Altitude Height	1410 (1225)	1120 (935)	820 (635)	



CAT I

<b>MIPS</b>	CATEGORY	A - B		C - D	
	LNAV 05L (MDA)	<b>620</b>	- 1.5 435 (500 - 1.5 / 2.8)	<b>620</b>	- 1.9 435 (500 - 1.9 / 2.8)
	S-PAR 05L	<b>442</b> - 0.8 257 (300 - 0.8 / 1.7) GS 2.75°			
CIRCLING	<b>720</b>	- 1.6 528 (600 - 1.6)	<b>900</b>	- 3.6 708 (800 - 3.6)	

**RNP RWY 05L (LNAV)** 51°10.10' N  
005°28.19' E **KLEINE-BROGEL (EBBL)**  
2-29

CHANGE: TACAN removed and LDA updated

BEL DEFENCE, AIR COMPONENT 24-MAR-2022 - THS