

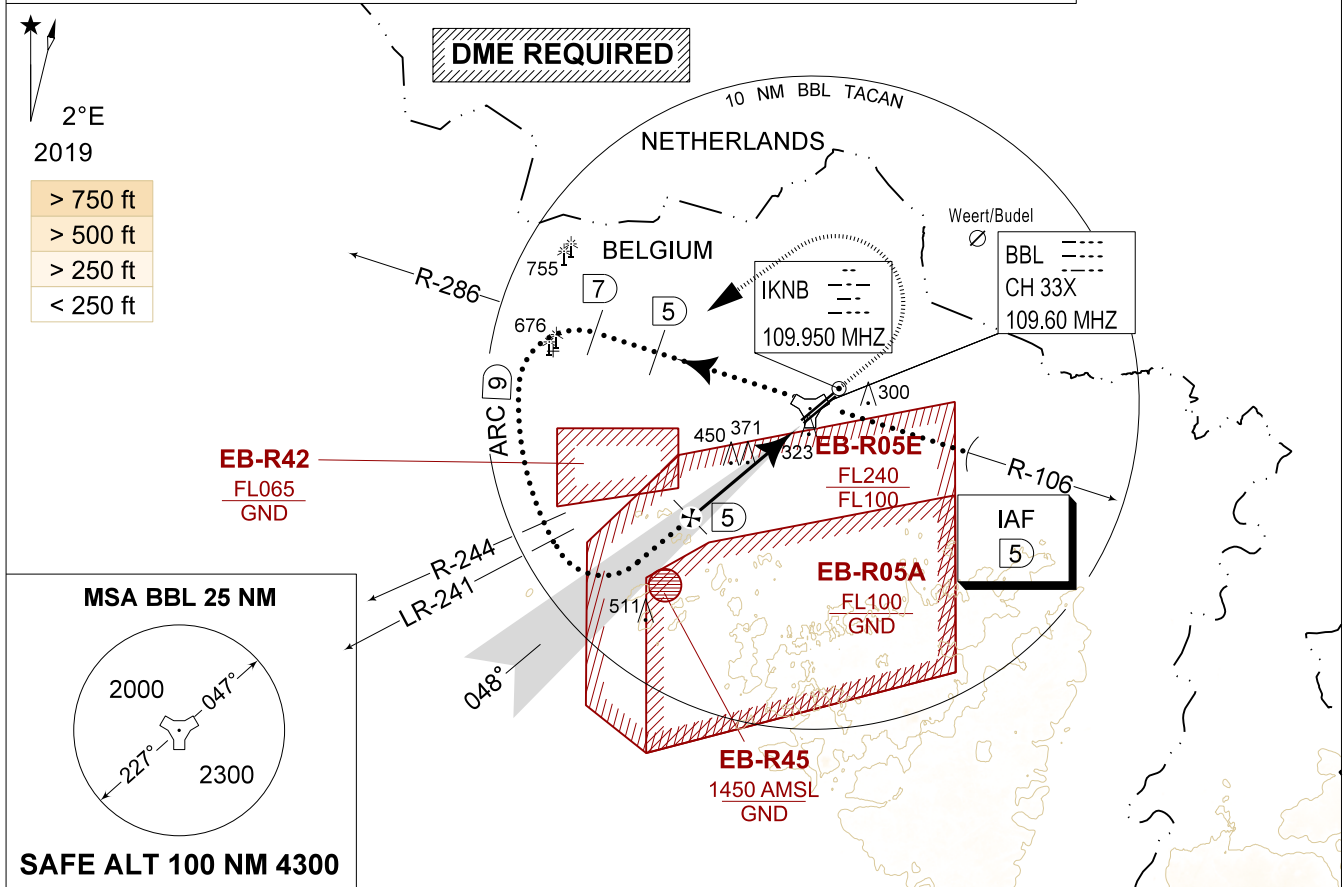
MIPS INSTRUMENT APPROACH CHART **AD ELEV 192** **QRA HPMA-ILS or QRA HPMA-LOC RWY 05L KLEINE-BROGEL (EBBL)**

BELGA RADAR 374.400 129.325		KLEINE-BROGEL APP 337.600 134.480		KLEINE-BROGEL TWR 248.075 134.105		KLEINE-BROGEL GND 362.775 122.100	
LOC / DME IKNB 109.950 / 33X	APP COURSE 048°	GS INTCP ALT 1700 FT	GS 3.00°	DA 385	THR 185	ALS 930 M	LDA 8104 FT

CAUTION:

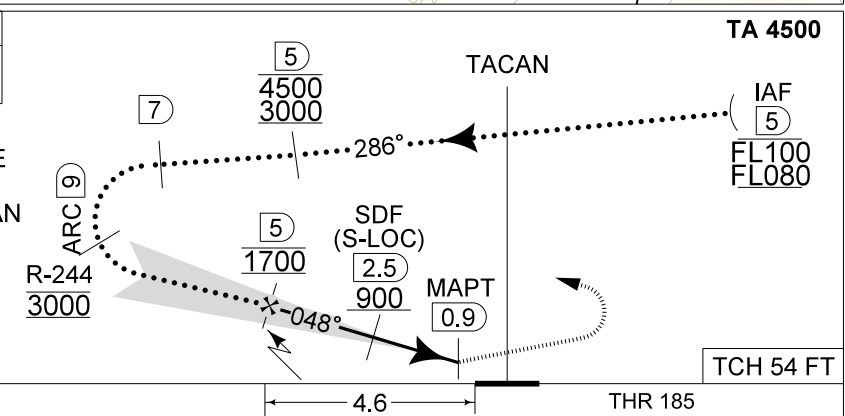
- a) TO BE USED FOR QRA RECOVERY OUTSIDE MIL FLYING HOURS OR FOR TRAINING PURPOSES OF HOMEBASED AIRCRAFT
- b) AIRCRAFT PROCEEDING IAF AT FL 100 OR ABOVE REQUIRES DECONFLICTION WITH EB-R5A AND EB-R05E
- c) ATC MONITORING REQUIRED TO REMAIN CLEAR OF EB-R42
- d) DECONFLICTION WITH EB-R05A REQUIRED WHEN PAMPA IS ACTIVE

IAF
51°08.50'N
005°35.40'E



DME BBL	5	4	3	2	1
Altitude	1700	1380	1060	740	420
Height	(1515)	(1195)	(875)	(555)	(235)

MISSED APPROACH
Climb straight ahead to 1000 FT. At 1 DME passed BBL TACAN continue climb to 3000 FT. At 2.5 DME passed BBL TACAN turn left at MAX 275 KIAS to Intercept 7 DME/R-286 outbound and proceed for a ILS RWY 05L.



CAT I	HPMA	THR 185
S-ILS 05L	385 - 0.8 200 (200 - 0.8 / 0.9) GS 3.00°	
S-PAR 05L	385 - 0.8 200 (200 - 0.8 / 0.9) GS 3.00°	
S-LOC 05L	620 - 1.3 435 (500 - 1.3 / 2.3)	

QRA HPMA-ILS or QRA HPMA-LOC RWY 05L **51°10.10' N 005°28.19' E** **KLEINE-BROGEL (EBBL)**

CHANGE: CAUTION updated

BEL DEFENCE, AIR COMPONENT 13-JUN-2024 - THS