

NATIONAL INSTRUMENT APPROACH CHART

AA RWY 23R KLEINE-BROGEL (EBBL)

AD ELEV 192

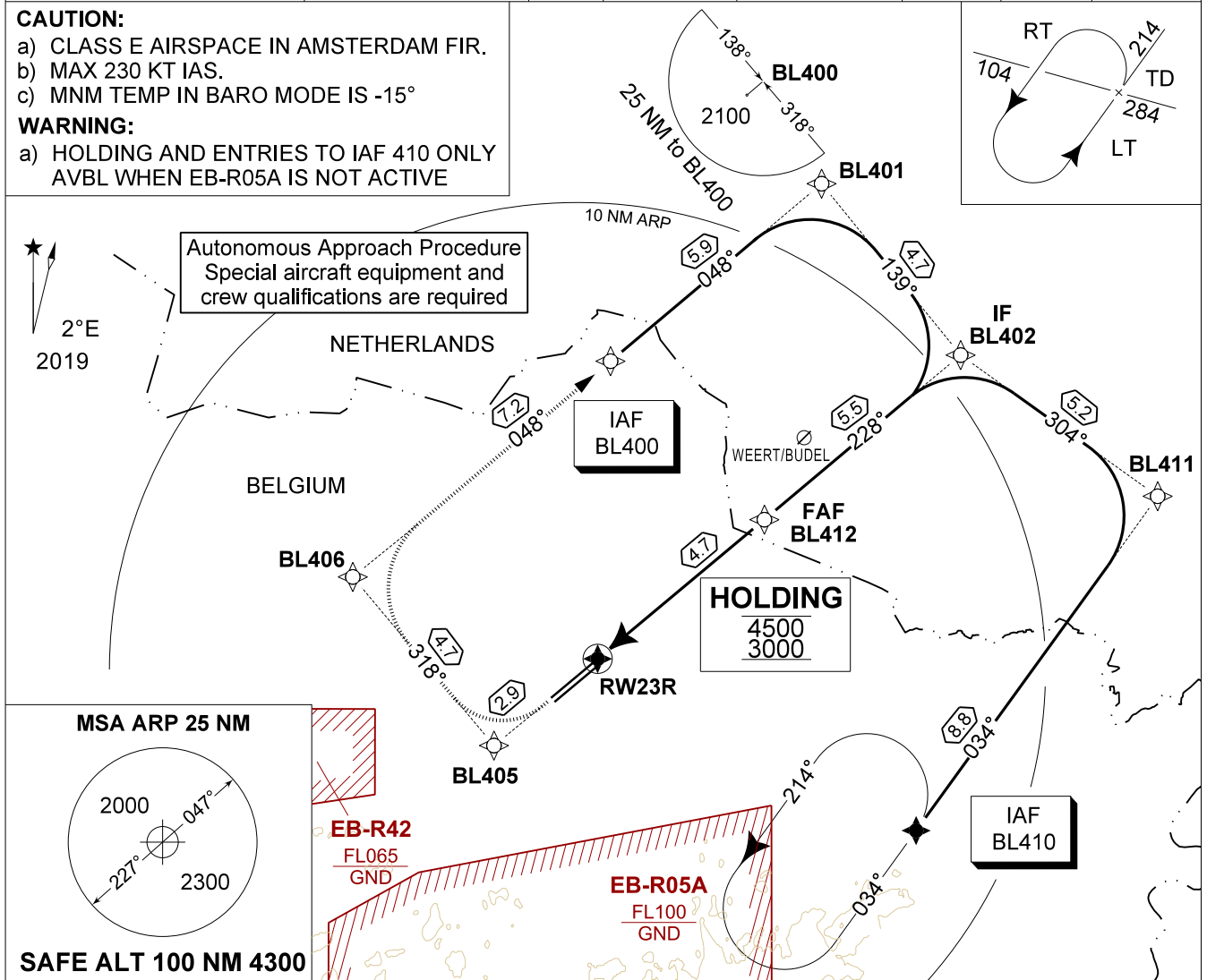
BELGA RADAR 374.400 129.325	KLEINE-BROGEL APP 337.600 134.480	KLEINE-BROGEL TWR 248.075 134.105	KLEINE-BROGEL GND 362.775 122.100
APCH in EGNOS service Volume for APV SBAS usable when available	APP COURSE 228° M 230° T	GS 3.00°	FAF ALT 1700 FT
		DA GEO 581 DA BARO 434	THR 161 FT
			ALS 930 M
			LDA 8045 FT

CAUTION:

- a) CLASS E AIRSPACE IN AMSTERDAM FIR.
- b) MAX 230 KT IAS.
- c) MNM TEMP IN BARO MODE IS -15°

WARNING:

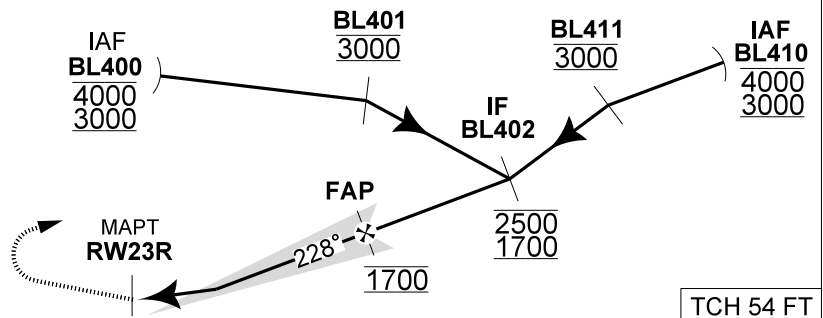
- a) HOLDING AND ENTRIES TO IAF 410 ONLY AVBL WHEN EB-R05A IS NOT ACTIVE



THR 23R	5	4	3	2	TA 4500
Altitude	1700	1490	1180	860	
Height	(1539)	(1329)	(1019)	(699)	

MISSED APPROACH

MAX SPEED 165 KIAS.
Climb inbound BL405 then BL406 to reach IAF BL400 at 3000 FT.



CAT I	THR 161	4.7	TCH 54 FT
-------	---------	-----	-----------

CATEGORY	C	Data ALS RWY 23R	
AA (GEO) 23R (DA)	581 - 1.2 420 (500 - 1.2 / 2.2) GS 3.00°	ANCHOR POINT: ALS Code: Final Course (true): Vertical Path Angle:	N 51°10.528' / E 005°29.000' / 215 FT EZZ PUX 230 °T 3.00°
AA (BARO) 23R (DA)	434 - 0.8 273 (300 - 0.8 / 1.3) GS 3.00°	FAP Altitude: Distance IF - FAP: Anchor Point:	1700 FT 5.5 NM 54 FT ABOVE THR 23R

AA RWY 23R

51°10.10' N
005°28.19' E

KLEINE-BROGEL (EBBL)

CHANGE: New chart

BEL DEFENCE, AIR COMPONENT 13-JUN-2024 - THS