

NATIONAL INSTRUMENT APPROACH CHART

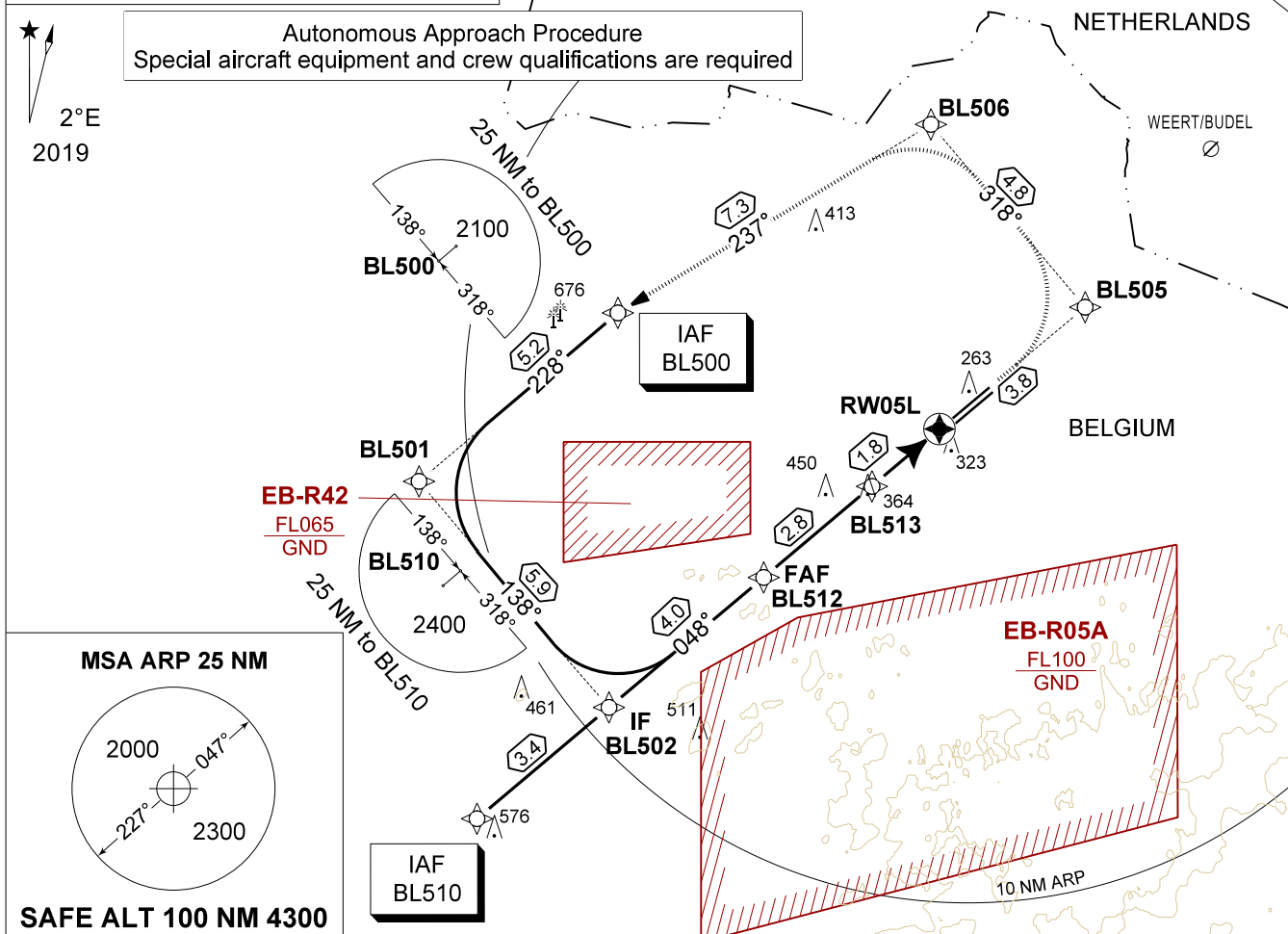
AA RWY 05L KLEINE-BROGEL (EBBL)

AD ELEV 192

BELGA RADAR 374.400 129.325	KLEINE-BROGEL APP 337.600 134.480	KLEINE-BROGEL TWR 248.075 134.105	KLEINE-BROGEL GND 362.775 122.100
APCH in EGNOS service Volume for APV SBAS usable when available	APP COURSE 048° M 050° T 3.00°	GS 1700 FT	FAF ALT 1700 FT
	DA GEO 605 DA BARO 509	THR 185 FT	ALS 930 M
		LDA 8104 FT	

CAUTION:

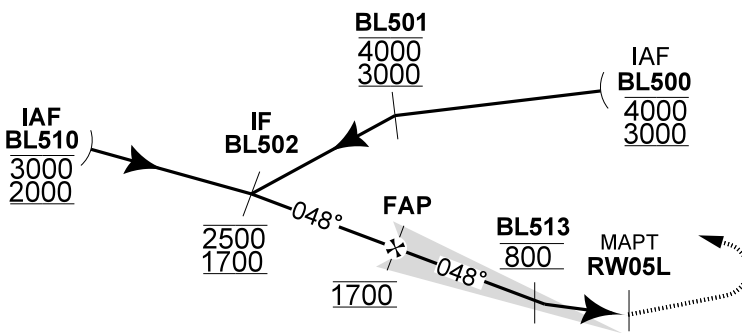
- a) MISSED APPROACH AT A CLIMB GRADIENT OF 4.3% UNTIL PASSING 2500 FT TO REMAIN IN CONTROLLED AIRSPACE. A CLIMB GRADIENT OF 2.5% GARANTEES REQUIRED OBSTACLE CLEARANCE.
- b) MNM TEMP IN BARO MODE IS -15°



THR 05L	4	3	2
Altitude	1520	1200	880
Height	(1335)	(1015)	(695)

TA 4500

MISSED APPROACH
(MIN CG 4.3% UNTIL 2500 FT)
MAX SPEED 190 KIAS.
Climb inbound BL505 then BL506 to reach IAF BL500 at 3000 FT.



CAT I

2.8 1.8 THR 185

CATEGORY	C	Data ALS RWY 05L	
AA (GEO) 05L (DA)	605 - 1.2 420 (500 - 1.2 / 2.2) GS 3.00°	ANCHOR POINT: ALS Code: Final Course (true): Vertical Path Angle:	N 51°09.692' / E 005°27.410' / 239 FT FRH 5 DM 050 °T 3.00°
AA (BARO) 05L (DA)	509 - 0.8 324 (400 - 0.8 / 1.6) GS 3.00°	FAP Altitude: Distance IF - FAP: Anchor Point:	1700 FT 3.67 NM 54 FT ABOVE THR 05L

AA RWY 05L

51°10.10' N
005°28.19' E

KLEINE-BROGEL (EBBL)

CHANGE: New chart