

MIPS

INSTRUMENT DEPARTURE CHART

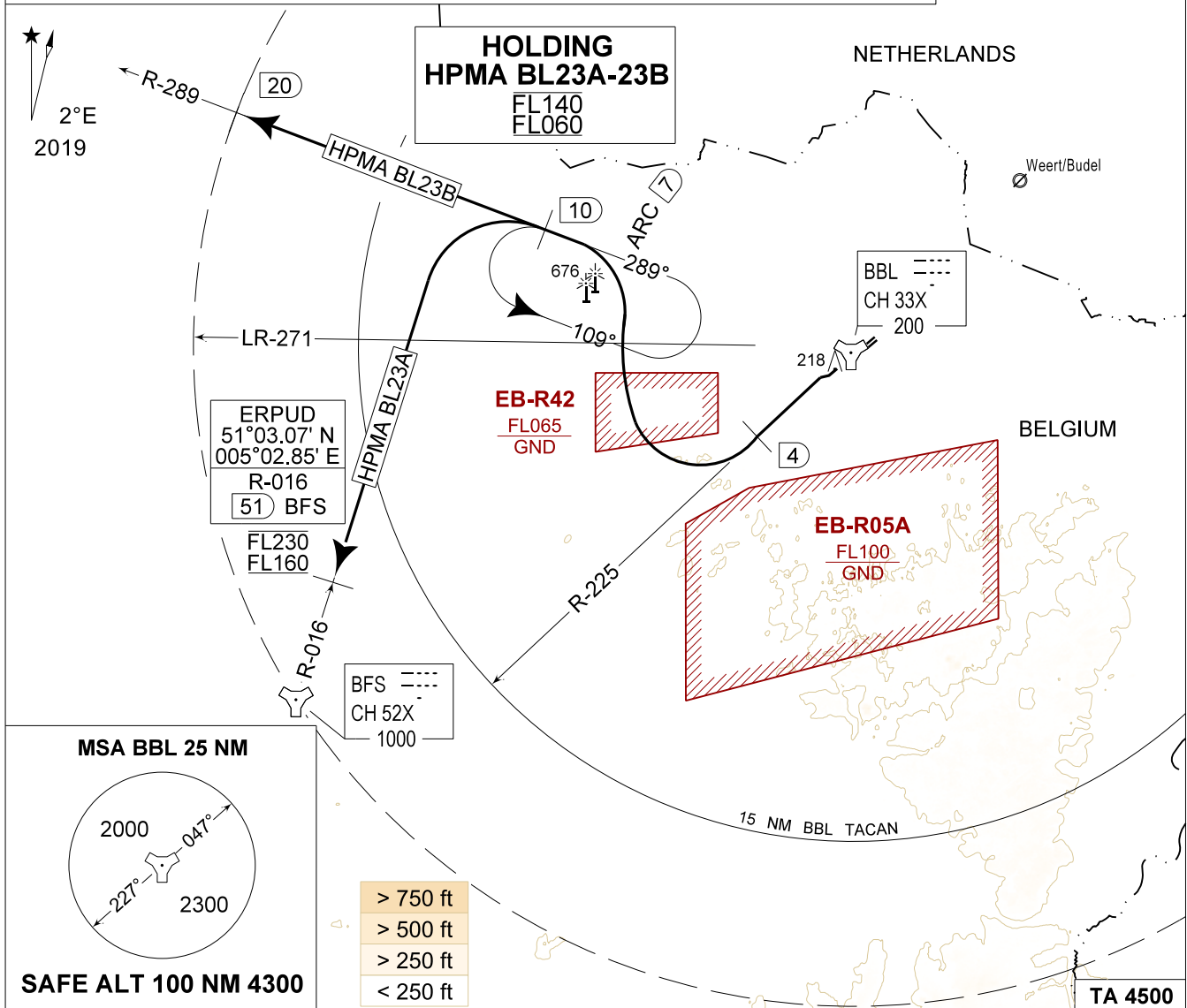
AD ELEV 192

HPMA BL 23A - 23B
KLEINE-BROGEL (EBBL)

KLEINE-BROGEL GND 362.775 122.100	KLEINE-BROGEL TWR 248.075 134.105	KLEINE-BROGEL APP 337.600 134.480	BELGA RADAR 374.400 129.325						
TACAN BBL - CH 33X	RWY 23	PDG 8.75% 5.00°	From-To DER-10/R-289	120 1070	180 1600	240 2130	300 2660	360 3190	Reason ATC

CAUTION:

- a) PROCEDURE CANNOT BE EXECUTED IF EB-R42 IS RAISED ABOVE 2700 FT AMSL
- b) RADAR CONTROL MANDATORY ABOVE 4500 FT AMSL



<p>HPMA BL 23A (RWY 23) 33</p>	<ul style="list-style-type: none"> - Climb on R-225 outbound BBL TAC and contact EBBL APP. - At 4 DME, turn right to follow the ARC at 7 DME BBL. - Contact BELGA RADAR when passing 4500 FT AMSL. - Passing R-271, turn left to intercept R-289 outbound BBL TACAN. - At 10 DME BBL, turn left to intercept R-016 inbound BFS TACAN. - Proceed to entry REMBA corridor ERPUD, 51 DME R-016 BFS TACAN between FL160 and FL230 as instructed and maintain level.
<p>HPMA BL 23B (RWY 23) 27</p>	<ul style="list-style-type: none"> - Climb on R-225 outbound BBL TAC and contact EBBL APP. - At 4 DME, turn right to follow the ARC at 7 DME BBL. - Contact BELGA RADAR when passing 4500 FT AMSL. - Passing R-271, turn left to intercept R-289 outbound BBL TACAN. - Follow R-289 till 20 DME.

HPMA BL 23A - 23B

51°10.10' N
005°28.19' E

KLEINE-BROGEL (EBBL)

CHANGE: MSA and CAUTION

BEL DEFENCE, AIR COMPONENT 02-NOV-2023 - THS