

**MIPS**

**INSTRUMENT DEPARTURE CHART**

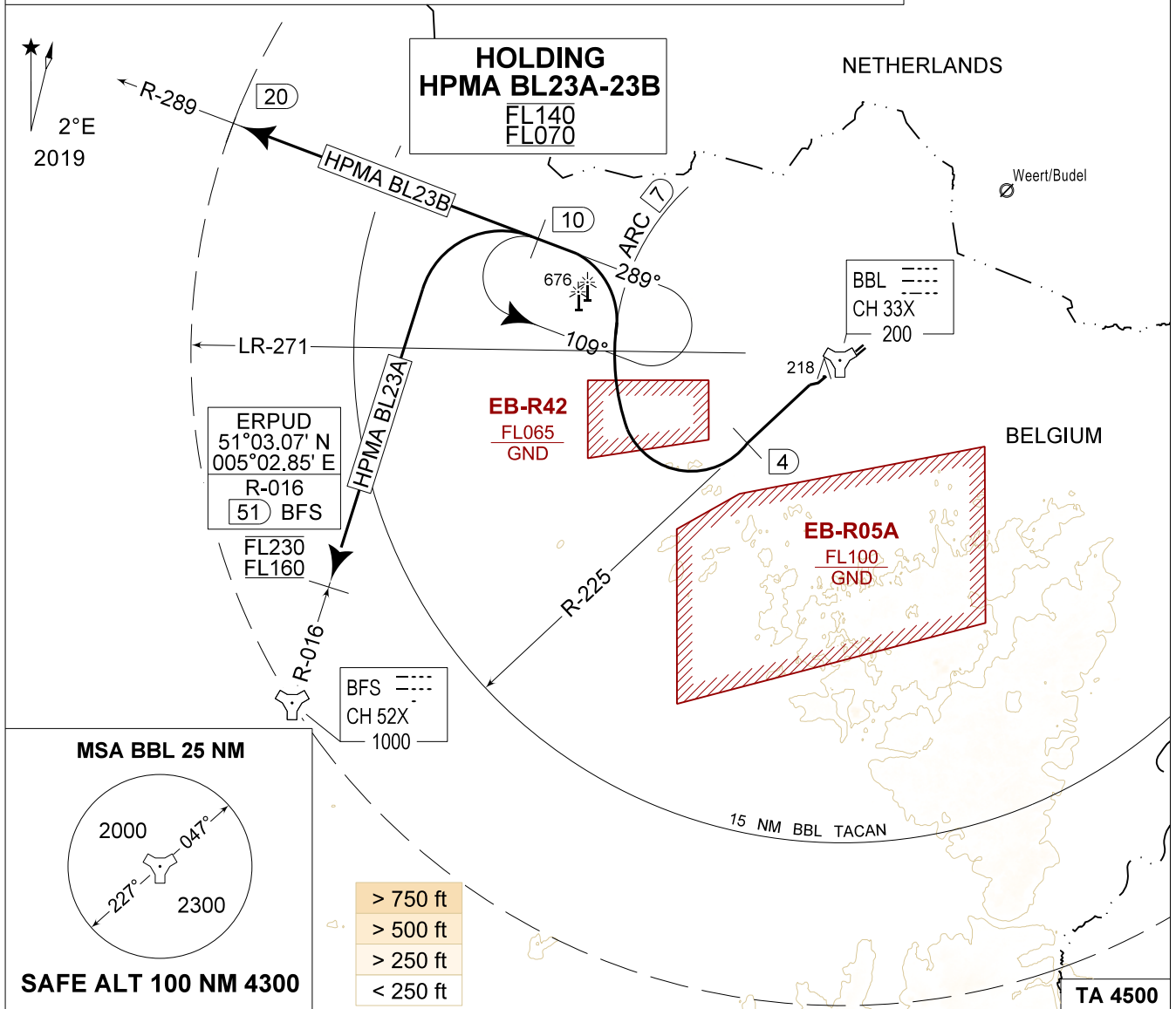
AD ELEV 192

**HPMA BL 23A - 23B  
KLEINE-BROGEL (EBBL)**

KLEINE-BROGEL GND 362.775 122.100		KLEINE-BROGEL TWR 248.075 134.105		KLEINE-BROGEL APP 337.600 134.480		BELGA RADAR 374.400 129.325				
TACAN BBL - CH 33X		RWY 23	PDG 8.75% 5.00°	From-To DER-10/R-289	120 1070	180 1600	240 2130	300 2660	360 3190	Reason ATC

**CAUTION:**

- a) PROCEDURE CANNOT BE EXECUTED IF EB-R42 IS RAISED ABOVE 2700 FT AMSL
- b) RADAR CONTROL MANDATORY ABOVE 4500 FT AMSL



HPMA BL 23A (RWY 23) 33	<ul style="list-style-type: none"> <li>- Climb on R-225 outbound BBL TAC and contact EBBL APP.</li> <li>- At 4 DME, turn right to follow the ARC at 7 DME BBL.</li> <li>- Contact BELGA RADAR when passing 4500 FT AMSL.</li> <li>- Passing R-271, turn left to intercept R-289 outbound BBL TACAN.</li> <li>- At 10 DME BBL, turn left to intercept R-016 inbound BFS TACAN.</li> <li>- Proceed to entry REMBA corridor ERPUD, 51 DME R-016 BFS TACAN between FL160 and FL230 as instructed and maintain level.</li> </ul>
-------------------------------	---

HPMA BL 23B (RWY 23) 27	<ul style="list-style-type: none"> <li>- Climb on R-225 outbound BBL TAC and contact EBBL APP.</li> <li>- At 4 DME, turn right to follow the ARC at 7 DME BBL.</li> <li>- Contact BELGA RADAR when passing 4500 FT AMSL.</li> <li>- Passing R-271, turn left to intercept R-289 outbound BBL TACAN.</li> <li>- Follow R-289 till 20 DME.</li> </ul>
-------------------------------	---

**HPMA BL 23A - 23B**

51°10.10' N  
005°28.19' E

**KLEINE-BROGEL (EBBL)**

CHANGE: Limit of holding

BEL DEFENCE, AIR COMPONENT 13-JUN-2024 - THS