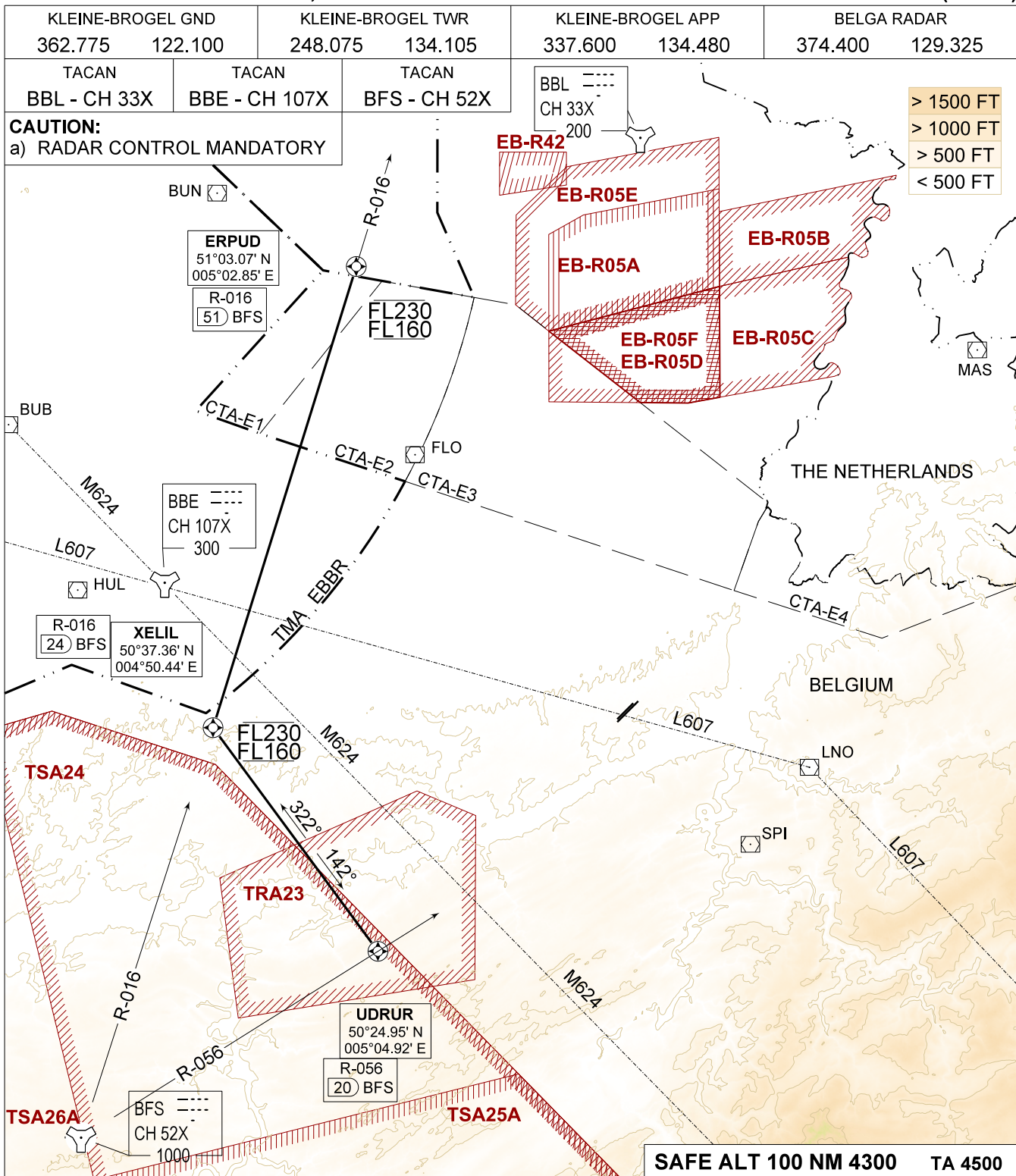


**NATIONAL
CORRIDOR EBBL to TSA 24, 25 & 26**

**REMPA CORRIDOR SB OR NB
KLEINE-BROGEL (EBBL)**



REMPA CORRIDOR SOUTHBOUND (SB)

- Proceed to ERPUD (51 DME / R-016 BFS).
- Pass ERPUD between FL160 and FL230 as instructed, fly inbound XELIL.
- Passing XELIL (24 DME / R-016 BFS) proceed as instructed.
- When proceeding to UDRUR (20 DME / R-056 BFS) turn left track 142°.

REMPA CORRIDOR NORTHBOUND (NB)

- Proceed to XELIL (24 DME / R-016 BFS).
- Pass XELIL between FL160 and FL230 as instructed, fly inbound ERPUD.
- Passing ERPUD (51 DME / R-016 BFS) proceed as instructed.

SAFE ALT 100 NM 4300 TA 4500

REMPA CORRIDOR SB OR NB

51°10.10' N
005°28.19' E

KLEINE-BROGEL (EBBL)

CHANGE: EB-R05F added

BEL DEFENCE, AIR COMPONENT 21-MAR-2024 - THS