

**MIPS**  
**INSTRUMENT DEPARTURE CHART**

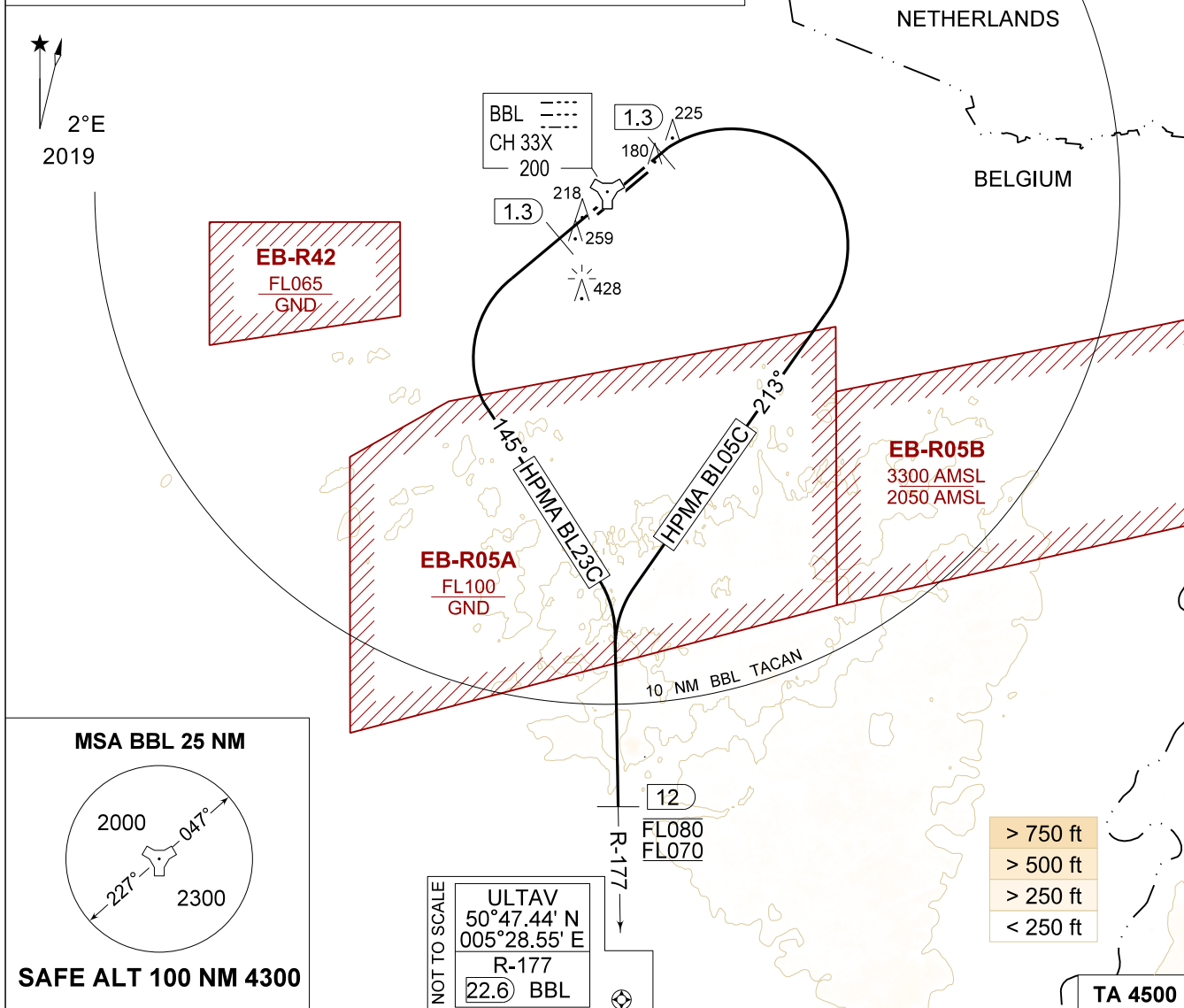
AD ELEV 192

**HPMA BL 05C - 23C**  
**KLEINE-BROGEL (EBBL)**

KLEINE-BROGEL GND 362.775 122.100	KLEINE-BROGEL TWR 248.075 134.105		KLEINE-BROGEL APP 337.600 134.480		BELGA RADAR 374.400 129.325					
TACAN BBL - CH 33X	RWY <b>05</b>	PDG 8.75%	5.00°	From-To DER-ULTAV	120 1070	180 1600	240 2130	300 2660	360 3190	Reason <b>ATC</b>
	<b>23</b>	8.75%	5.00°	DER-ULTAV	1070	1600	2130	2660	3190	<b>ATC</b>

**CAUTION:**

- a) PROCEDURE CANNOT BE EXECUTED WHEN EB-R05A IS ACTIVE
- b) NO TURN BEFORE 1.3 DME



<p>HPMA BL 05C (RWY 05)</p> <p>(24)</p>	<ul style="list-style-type: none"> <li>- Climb RWY heading and contact EBBL APP.</li> <li>- Passing 600 FT AMSL or 1.3 DME, whichever comes the latest, turn right and track 213° to Intercept R-177 outbound BBL TACAN.</li> <li>- Passing 4500 FT, contact BELGA RADAR.</li> <li>- Pass 12 DME between FL070 and FL080.</li> <li>- Continue on R-177 to ULTAV to join Liège corridor.</li> </ul>
<p>HPMA BL 23C (RWY 23)</p> <p>(16)</p>	<ul style="list-style-type: none"> <li>- Climb RWY heading and contact EBBL APP.</li> <li>- Passing 600 FT AMSL or 1.3 DME, whichever comes the latest, turn left and track 145° to Intercept R-177 outbound BBL TACAN.</li> <li>- Passing 4500 FT, contact BELGA RADAR.</li> <li>- Pass 12 DME between FL070 and FL080.</li> <li>- Continue on R-177 to ULTAV to join Liège corridor.</li> </ul>

**HPMA BL 05C - 23C**

51°10.10' N  
005°28.19' E

**KLEINE-BROGEL (EBBL)**