

**MIPS**

**INSTRUMENT DEPARTURE CHART**

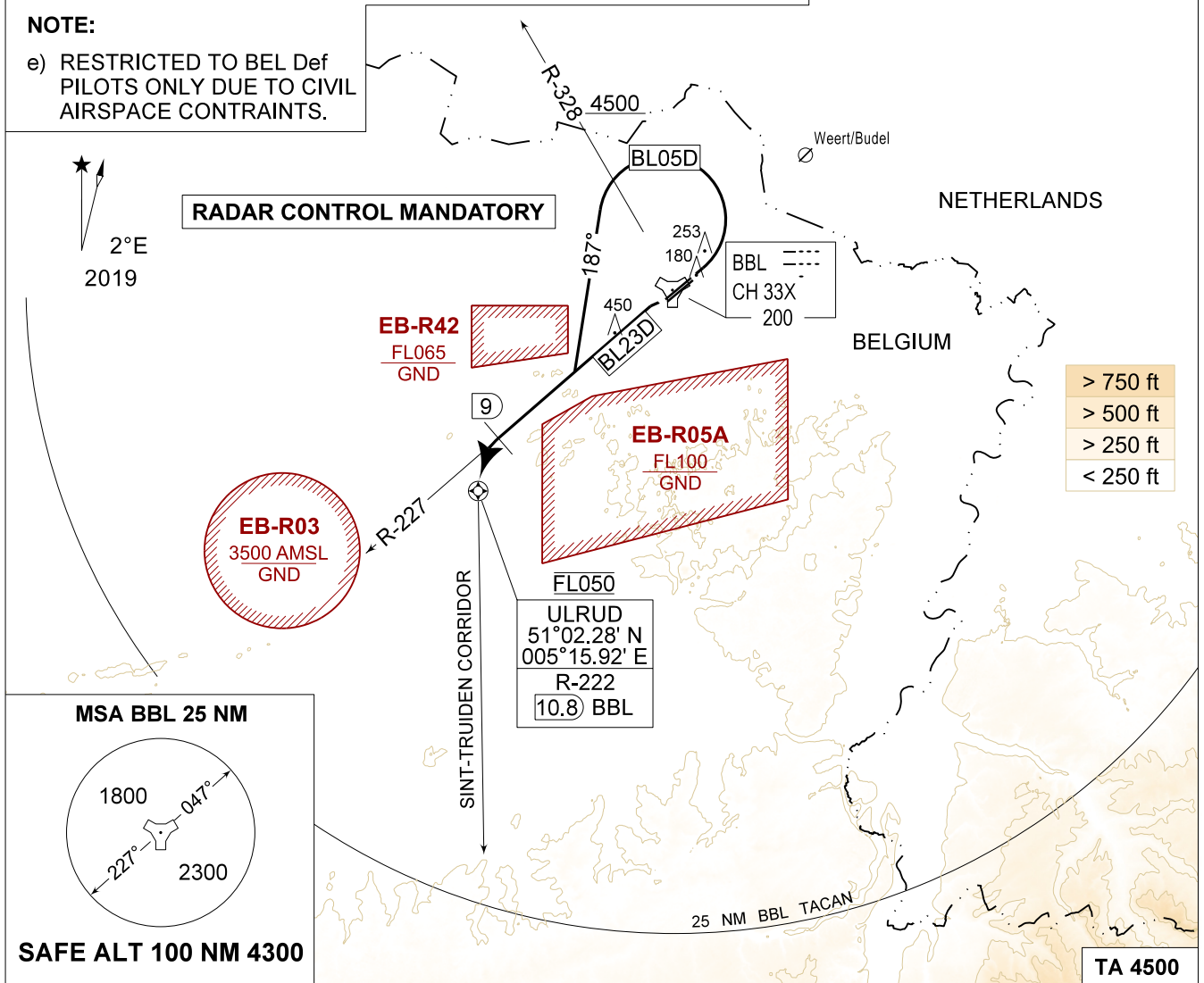
AD ELEV 192

**BL 05D - 23D  
KLEINE-BROGEL (EBBL)**

KLEINE-BROGEL GND 362.775 122.100	KLEINE-BROGEL TWR 314.375 134.105		KLEINE-BROGEL APP 337.975 134.480		BELGA RADAR 374.400 129.325					
TACAN BBL - CH 33X	RWY <b>05</b>	PDG 5.24%	3.00°	From-To DER-FL050	120 640	180 960	240 1280	300 1600	360 1920	Reason <b>ATC</b>
<b>CAUTION:</b>	<b>23</b>	7.55%	4.32°	DER-FL050	920	1380	1840	2300	2760	<b>ATC</b>

- CAUTION:**
- a) CLASS E AIRSPACE IN AMSTERDAM FIR
  - b) COMPLETE TURN WITHIN 6 DME TO REMAIN WITHIN BEL
  - c) HPMA AIRCRAFT TO PERFORM FIRST TURN BL 05D AT MAX 300 KIAS
  - d) NON-STANDARD CLIMB RATES FOR ATC PURPOSES

- NOTE:**
- e) RESTRICTED TO BEL Def PILOTS ONLY DUE TO CIVIL AIRSPACE CONSTRAINTS.



<p>BL 05D (RWY 05)</p> <p><b>27.5</b></p> <p>Restricted to BEL Def pilots only</p>	<ul style="list-style-type: none"> <li>- Climb RWY heading and contact EBBL APP.</li> <li>- Passing 600 FT AMSL or 1.3 DME, whichever comes the latest, turn left track 187° at MAX 210 KIAS (HPMA MAX 300 KIAS).</li> <li>- Passing R-328 at or above 4500 FT AMSL.</li> <li>- Intercept R-227 BBL TACAN outbound.</li> <li>- Passing 9 DME turn left on track 178°, pass ULRUD (10.8 DME / R-222 BBL TACAN) at FL050 and maintain level and contact Liège APP.</li> <li>- Entry Sint-Truiden corridor. (See page 3-10)</li> </ul>
<p>BL 23D (RWY 23)</p> <p><b>11</b></p> <p>Restricted to BEL Def pilots only</p>	<ul style="list-style-type: none"> <li>- Climb on R-227 BBL TACAN and contact EBBL APP.</li> <li>- Passing 9 DME turn left on track 178°, pass ULRUD (10.8 DME / R-222 BBL TACAN) at FL050 and maintain level and contact Liège APP.</li> <li>- Entry Sint-Truiden corridor. (See page 3-10)</li> </ul>

**BL 05D - 23D**

51°10.10' N  
005°28.19' E

**KLEINE-BROGEL (EBBL)**

CHANGE: OBST 1017 FT removed

BEL DEFENCE, AIR COMPONENT 03-NOV-2022 - THS