

MIPS

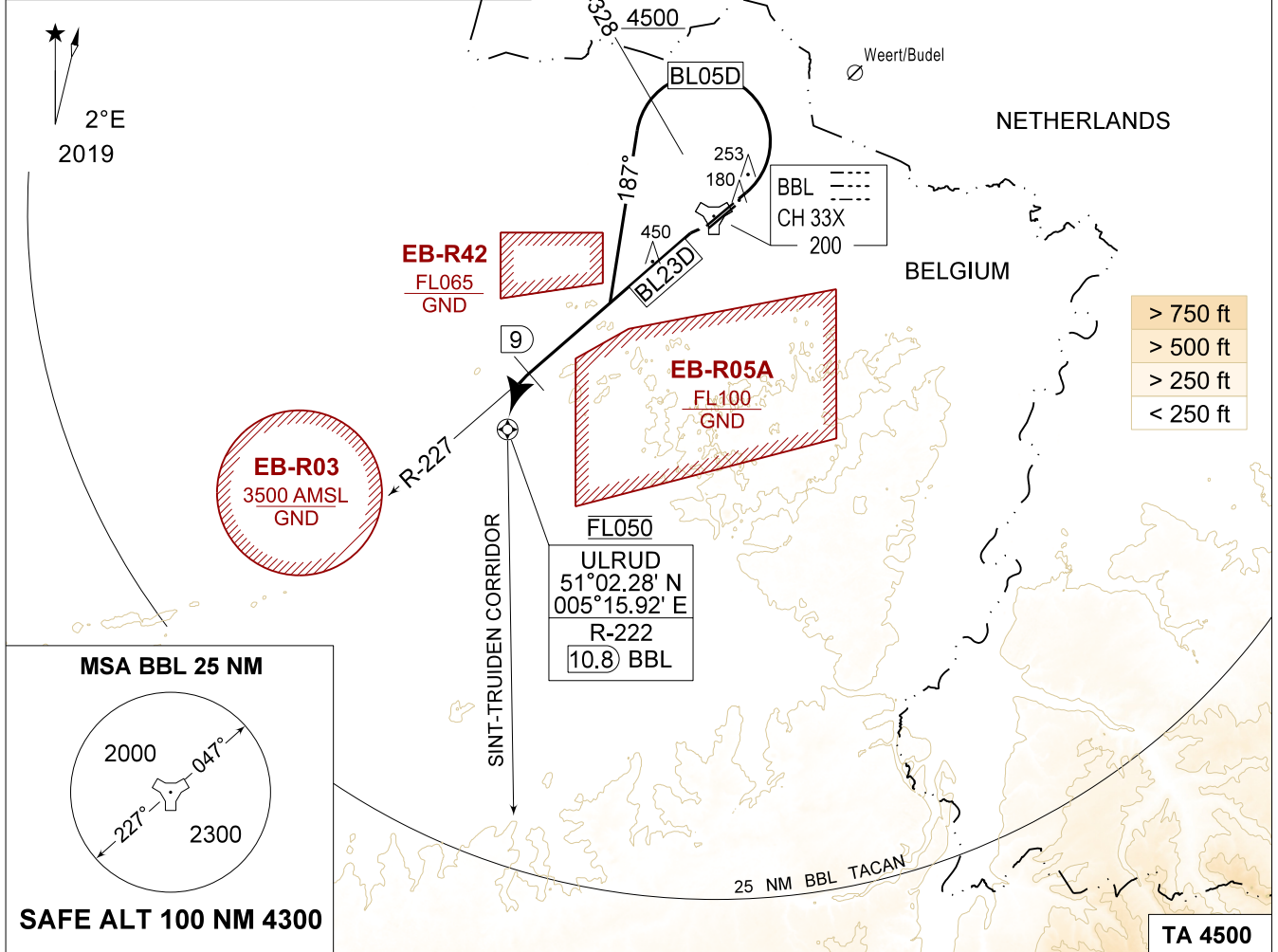
INSTRUMENT DEPARTURE CHART

AD ELEV 192

**BL 05D - 23D
KLEINE-BROGEL (EBBL)**

KLEINE-BROGEL GND 362.775 122.100	KLEINE-BROGEL TWR 248.075 134.105		KLEINE-BROGEL APP 337.600 134.480		BELGA RADAR 374.400 129.325					
TACAN BBL - CH 33X	RWY 05	PDG 5.24%	3.00°	From-To DER-FL050	120 640	180 960	240 1280	300 1600	360 1920	Reason ATC
CAUTION:	23	7.55%	4.32°	DER-FL050	920	1380	1840	2300	2760	ATC

- a) NON-STANDARD CLIMB-RATES FOR ATC PURPOSES
- b) ATC MONITORING REQUIRED TO REMAIN CLEAR OF EB-R42 AND EB-R05A
- c) BL 05D:
 - RESTRICTED TO BEL MIL PILOTS ONLY DUE TO CIVIL AIRSPACE CONSTRAINTS
 - CLASS E AIRSPACE IN AMSTERDAM FIR, TO REMAIN WITHIN BEL:
 - COMPLETE FIRST TURN WITHIN 6 DME
 - ATC MONITORING REQUIRED
 - HPMA: FIRST TURN MAX 300 KIAS



<p>BL 05D (RWY 05)</p> <p>(27.5)</p> <p>Restricted to BEL Def pilots only</p>	<ul style="list-style-type: none"> - Climb RWY heading and contact EBBL APP. - Passing 600 FT AMSL or 1.3 DME, whichever comes the latest, turn left track 187° at MAX 210 KIAS (HPMA MAX 300 KIAS). - Passing R-328 at or above 4500 FT AMSL. - Intercept R-227 BBL TACAN outbound. - Passing 9 DME turn left on track 178°, pass ULRUD (10.8 DME / R-222 BBL TACAN) at FL050 and maintain level and contact Liège APP. - Entry Sint-Truiden corridor. (See page 3-10)
<p>BL 23D (RWY 23)</p> <p>(11)</p> <p>Restricted to BEL Def pilots only</p>	<ul style="list-style-type: none"> - Climb on R-227 BBL TACAN and contact EBBL APP. - Passing 9 DME turn left on track 178°, pass ULRUD (10.8 DME / R-222 BBL TACAN) at FL050 and maintain level and contact Liège APP. - Entry Sint-Truiden corridor. (See page 3-10)

CHANGE: CAUTION b)

BEL DEFENCE, AIR COMPONENT 13-JUN-2024 - THS

BL 05D - 23D

51°10.10' N
005°28.19' E

KLEINE-BROGEL (EBBL)