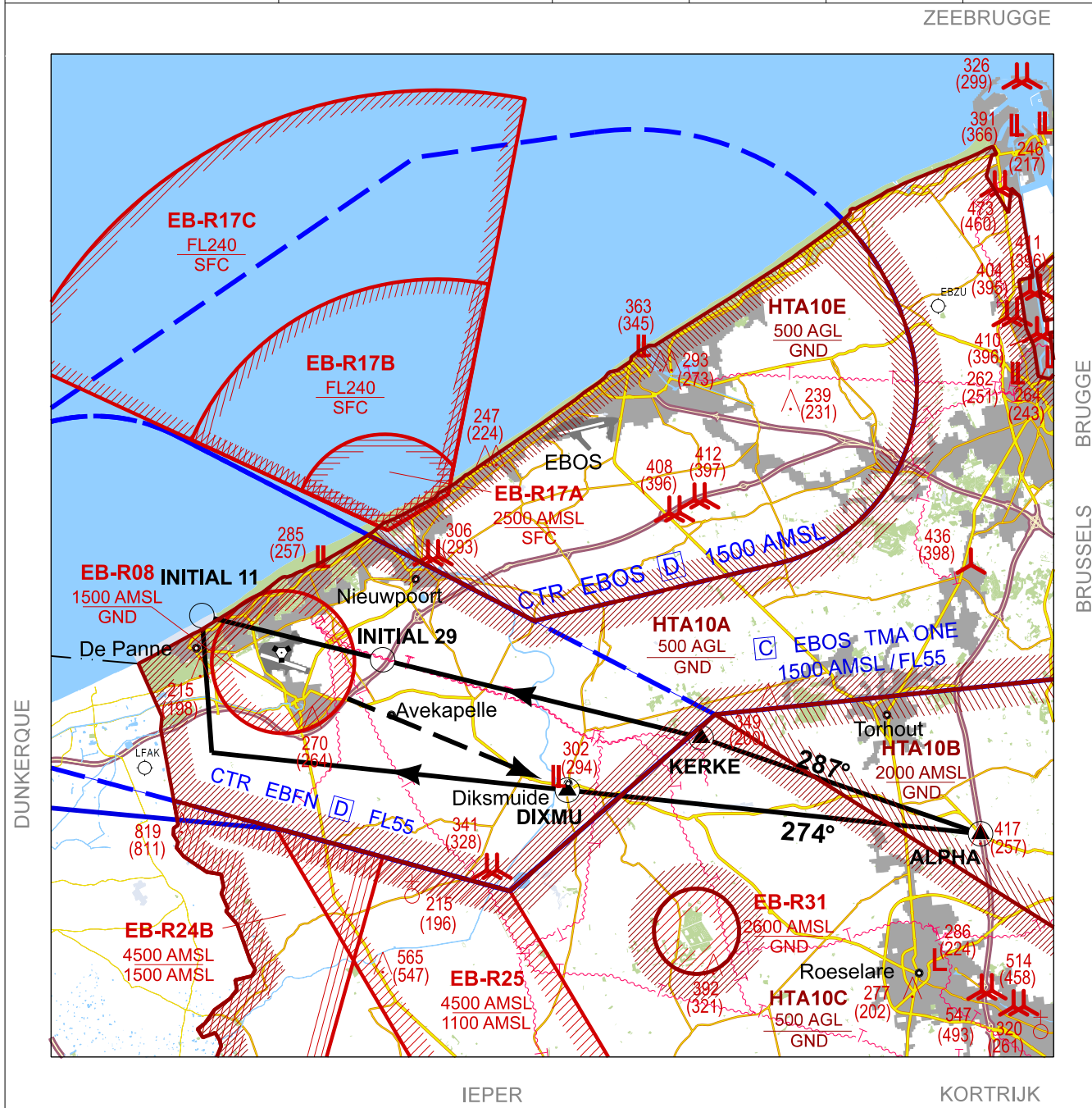


VISUAL APPROACH CHART

AD ELEV 11

**JET RWY 11 - 29
KOKSIJDE (EBFN)**

BELGA RADAR 374.400 129.325	KOKSIJDE APP 235.050 121.055	KOKSIJDE TWR 231.800 122.100		KOKSIJDE GND 231.800 122.100	
DVORTAC KOK - CH 092X - 114.500	-	ALS 11 -	ALS 29 420 M	LDA 11 8436 FT	LDA 29 8446 FT



**Visual approach altitude 1500 FT mandatory.
Visual departure altitude 1000 FT mandatory.**

- ALPHA: 51°00.58' N - 003°10.23' E - PSN R-103 / 20.2 DME KOK at 1500 FT AMSL. (crossing road N35 / A17)
- KERKE: 51°03.30' N - 002°57.80' E - PSN R-100 / 11.9 DME KOK at 1500 FT AMSL. (church of Bovekerke)
- DIXMU: 51°01.83' N - 002°51.84' E - SOUTH of DIKSMUIDE 1000 FT AMSL.

CHANGE: MAG VAR

BEL DEFENCE, AIR COMPONENT 07-SEP-2023 - THS

JET RWY 11 - 29

51°05.42' N
002°39.17' E

KOKSIJDE (EBFN)