

MIPS
INSTRUMENT APPROACH CHART

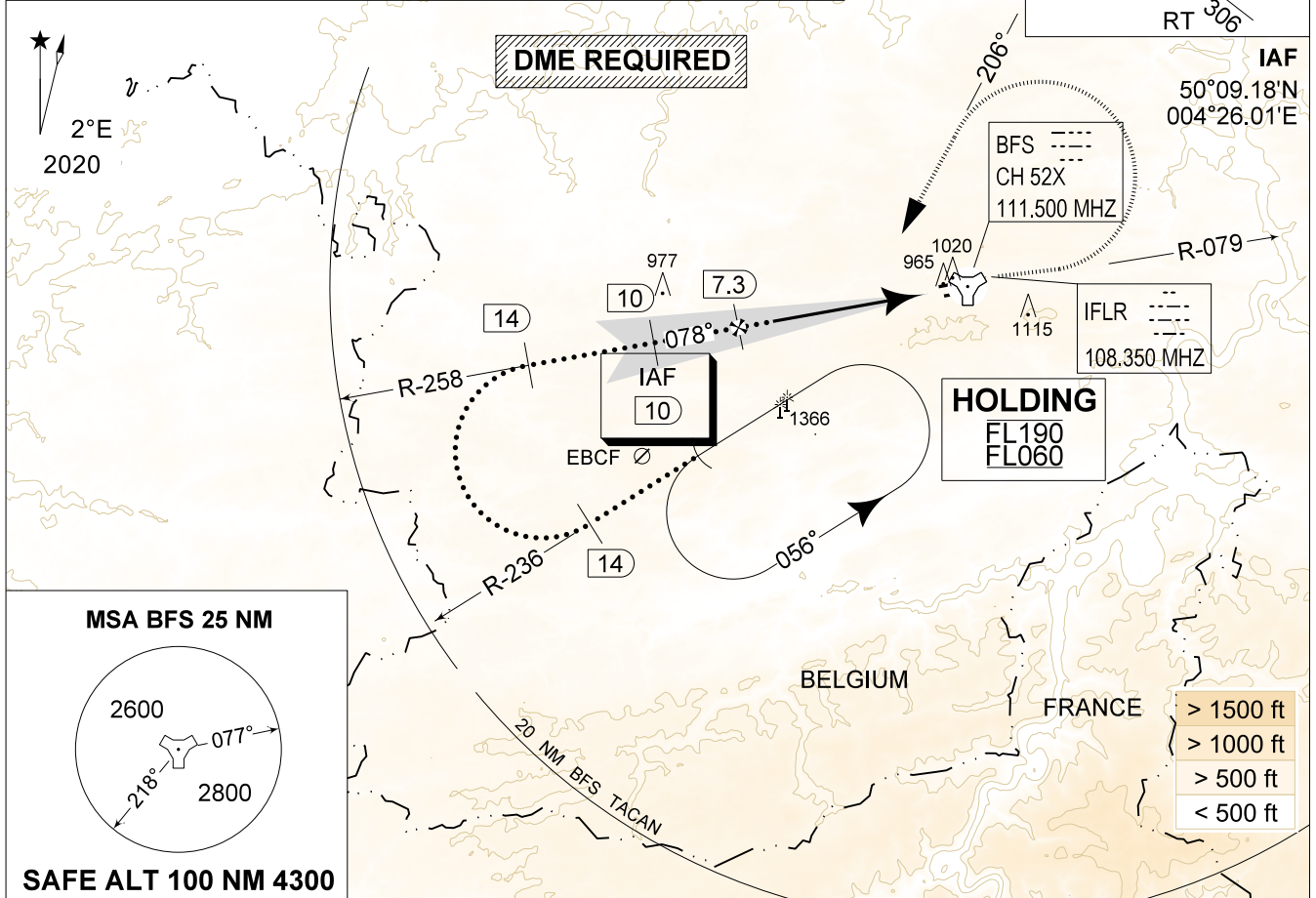
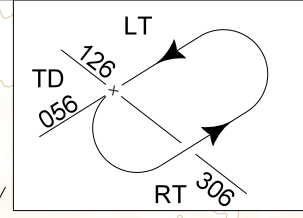
AD ELEV 927

HPMA-ILS or HPMA-LOC RWY 08L
FLORENNES (EBFS)

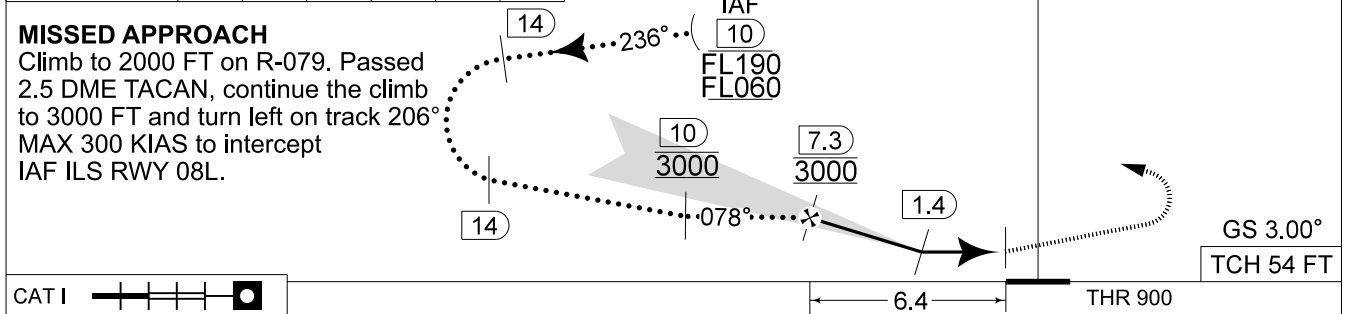
BELGA RADAR 374.400 129.325		FLORENNES APP 372.275 124.380		FLORENNES TWR 234.800 125.880		FLORENNES GND 356.925 122.100	
LOC/DME IFLR 108.350 / 52X	APP COURSE 078°	GS INTCP ALT 3000 FT	GS 3.00°	DA 1100	THR 900 FT	ALS 750 M	LDA 8648 FT

CAUTION:
a) LOCALIZER ANTENNA 1000 FT IN FRONT OF THR RWY 08L, 10 FT ABOVE THR ELEV.

NOTE:
a) DME INFORMATION AVAILABLE UNDER FREQUENCY 111.500 MHZ



DME BFS	7	6	5	4	3	2
Altitude	2900	2580	2260	1940	1620	1310
Height	(2000)	(1680)	(1360)	(1040)	(720)	(410)



CAT I

CATEGORY	HPMA
S-ILS 08L	1100 - 0.8 200 (200 - 0.8 / 0.9) GS 3.00°
S-LOC	1360 - 1.7 460 (500 - 1.7 / 2.4)
CIRCLING	1560 - 3.2 633 (700 - 3.2)

HPMA-ILS or HPMA-LOC RWY 08L N50 14 36
E004 38 45 **FLORENNES (EBFS)**

CHANGES: Missed approach

BEL DEFENCE, AIR COMPONENT 02-NOV-2023 - THS