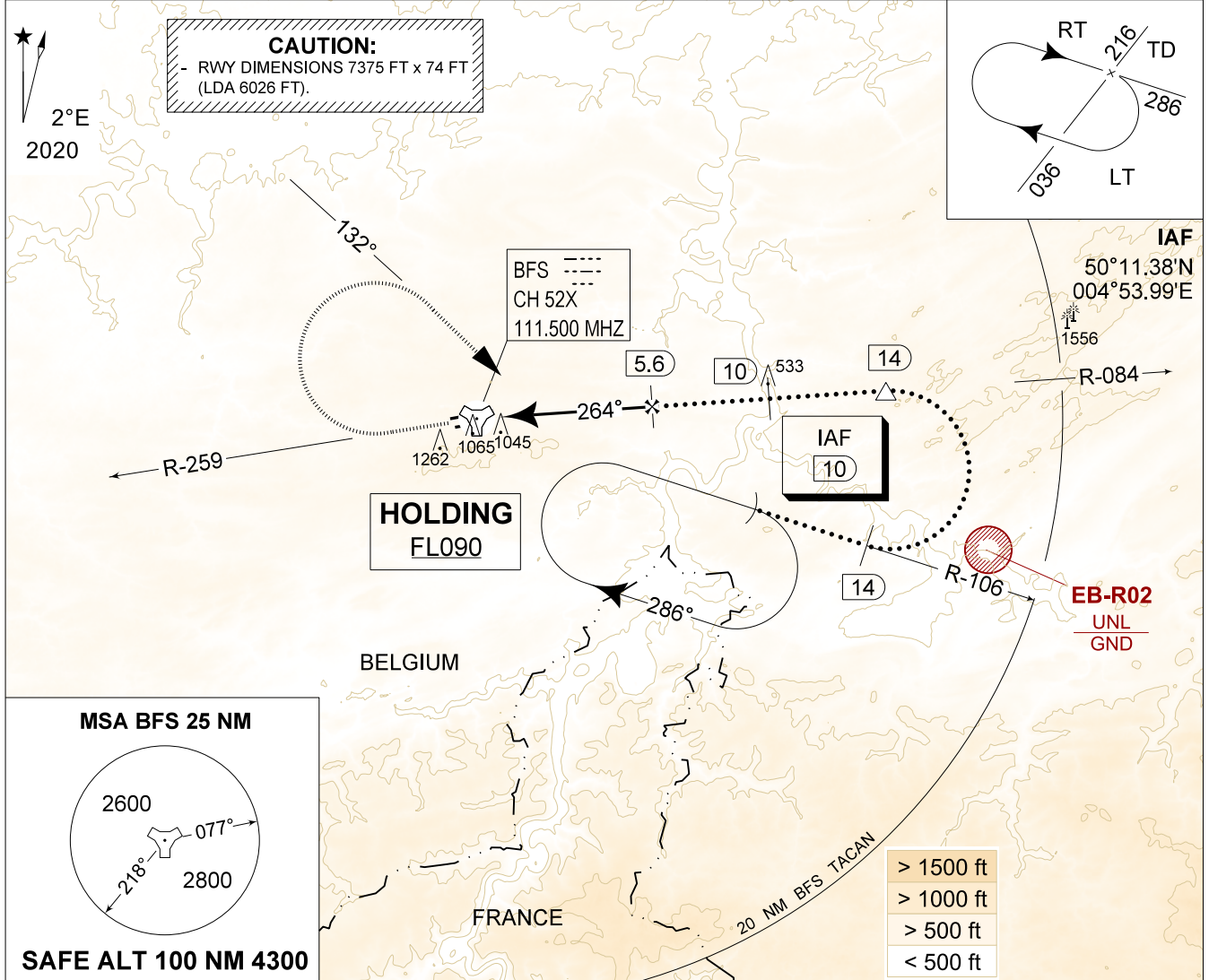


MIPS
INSTRUMENT APPROACH CHART

AD ELEV 927

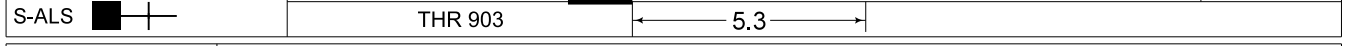
HPMA-TACAN RWY 26L
FLORENNES (EBFS)

BELGA RADAR 374.400 129.325		FLORENNES APP 372.275 124.380		FLORENNES TWR 234.800 125.880		FLORENNES GND 356.925 122.100	
TACAN BFS CH 52X	APP COURSE 264°	FAF ALT 2500 FT	DESCENT GR 4.8%(2.75°)	MDA 1340	THR 903 FT	ALS 210 M	LDA 6026 FT



DME BFS	5	4	3	2	TACAN	TA 4500
Altitude	2340	2040	1750	1460		
Height	(1440)	(1140)	(850)	(560)		

MISSED APPROACH
Climb to 2000 FT on R-259. Passed 2.5 DME TACAN, continue the climb to 3000 FT and turn right on track 132° at MAX 300 KIAS to intercept IAF TACAN RWY 26L.



S-ALS	THR 903	5.3	TCH 50 FT
CATEGORY	HPMA		
S-TAC 26L	1340 - 2.3 437 (500 - 2.3 / 2.5)		
CIRCLING	1560 - 3.2 633 (700 - 3.2)		

HPMA-TACAN RWY 26L 50°14.60' N
004°38.74' E **FLORENNES (EBFS)**

CHANGES: EB-R02 updated

BEL DEFENCE, AIR COMPONENT 25-JAN-2024 - THS