

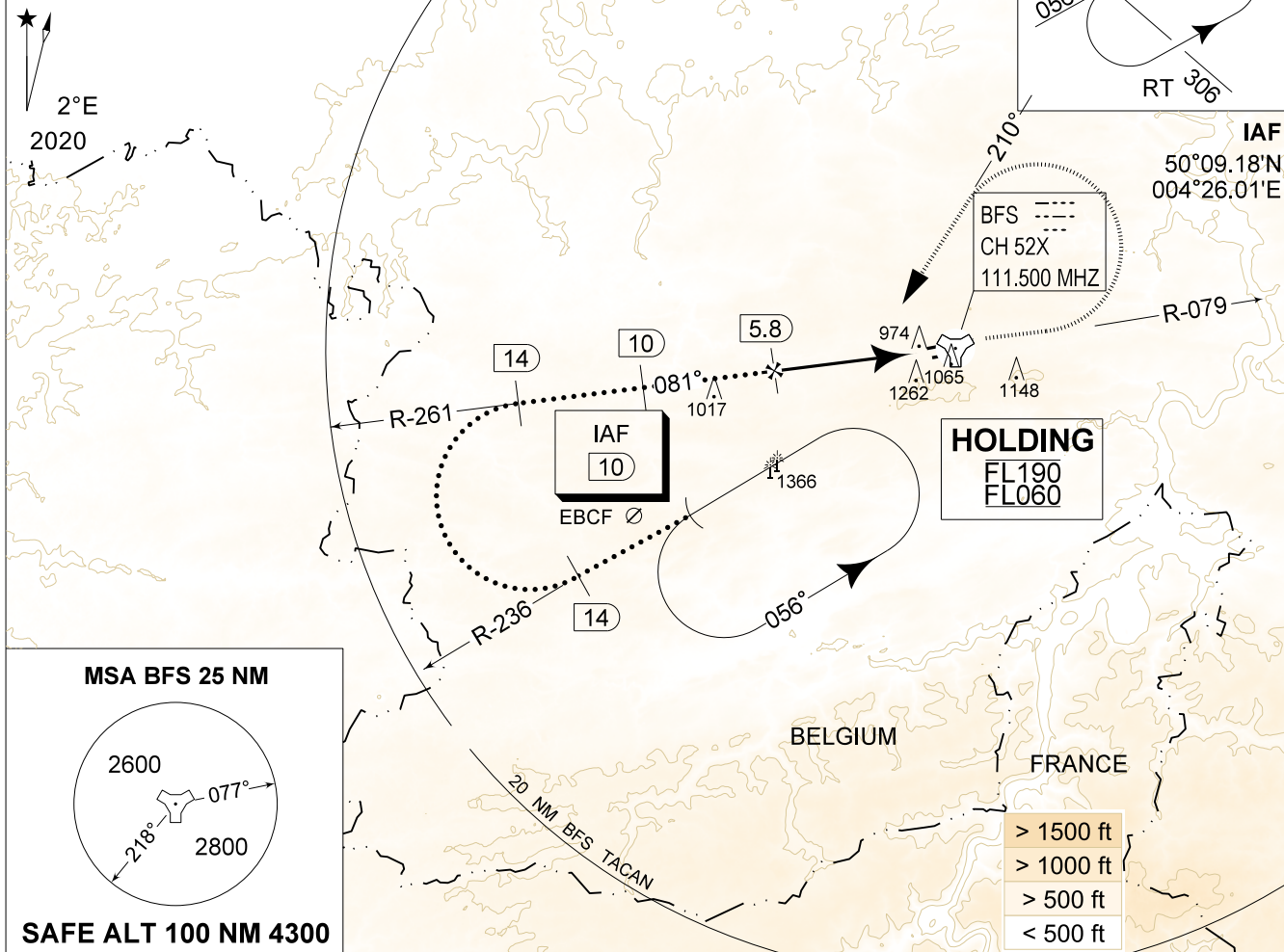
**MIPS**  
**INSTRUMENT APPROACH CHART**

AD ELEV 927

**HPMA-TACAN RWY 08L**  
**FLORENNES (EBFS)**

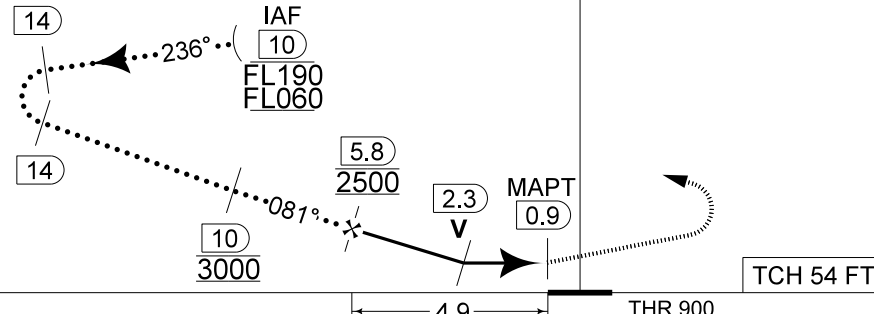
BELGA RADAR 374.400 129.325		FLORENNES APP 372.275 124.380		FLORENNES TWR 234.800 125.880		FLORENNES GND 356.925 122.100	
TACAN BFS CH 52X	APP COURSE 081°	FAF ALT 2500 FT	DESCENT GR 5.2%(3.00°)	MDA <b>1400</b>	THR 900 FT	ALS 750 M	LDA 8648 FT

**CAUTION:**  
a) LOCALIZER ANTENNA 1000 FT IN FRONT OF THR RWY 08L, 10 FT ABOVE THR ELEV.



DME BFS	5	4	3
Altitude	2260	1950	1630
Height	(1360)	(1050)	(730)

**MISSED APPROACH**  
Climb to 2000 FT on R-079. Passed 2.5 DME TACAN, continue the climb to 3000 FT and turn left on track 210° at MAX 300 KIAS to intercept IAF TACAN RWY 08L.



CAT I

CATEGORY	HPMA
S-TAC 08L	<b>1400</b> - 1.9 500 (500 - 1.9 / 2.6)
CIRCLING	<b>1560</b> - 3.2 633 (700 - 3.2)

**HPMA-TACAN RWY 08L**

N50 14 36  
E004 38 45

**FLORENNES (EBFS)**

BEL DEFENCE, AIR COMPONENT 30-NOV-2023 - THS